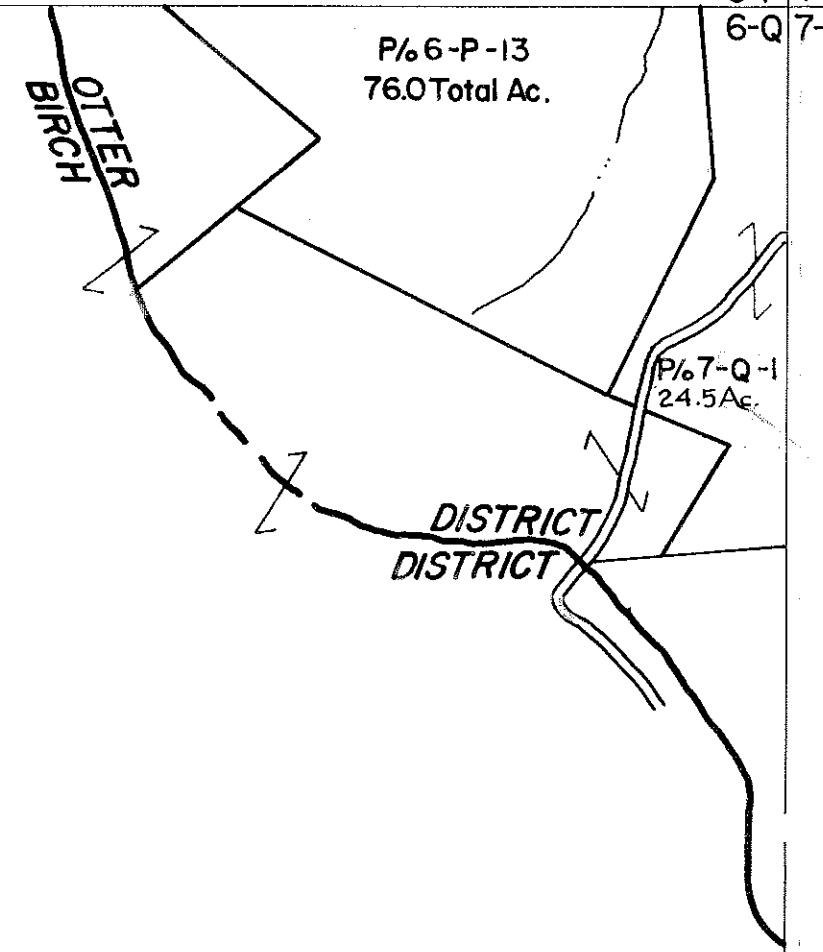


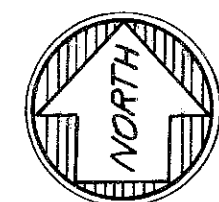
6-P  
6-Q

6-P 7-P  
6-Q 7-Q



6-Q

6-Q 7-Q  
6-R 7-R



For Tax Purposes Only

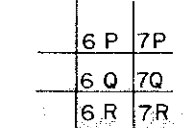
Prepared by  
**VOGT, IVERS AND ASSOCIATES**  
 ENGINEERS-ARCHITECTS  
 CHARLESTON, W.VA.  
 CINCINNATI, OHIO

Property line \_\_\_\_\_  
 Edge of pavement or roadway - - - -  
 Corporation line - - - - -  
 District line - - - - -  
 County line - - - - -

Original lot line - - - - -  
 Dead lot number (15)  
 Parcel or index number (15)  
 Improvement (15)  
 Railroad (15)

Revisions	
1	PW
2	Revised to 7-1-80
3	" " 7-1-83 RLB
4	7/1/84 RLB
5	
6	
7	
8	

KEY MAP



# BRAXTON COUNTY

STATE OF WEST VIRGINIA

Office of Assessor

DISTRICT

## OTTER DISTRICT

SHEET NO: 6-Q

Date, Aerial Photography: 4-22-60  
 Photo No: BR-14-168

Date, Map: 9-3-62  
 Scale: 1" = 400'