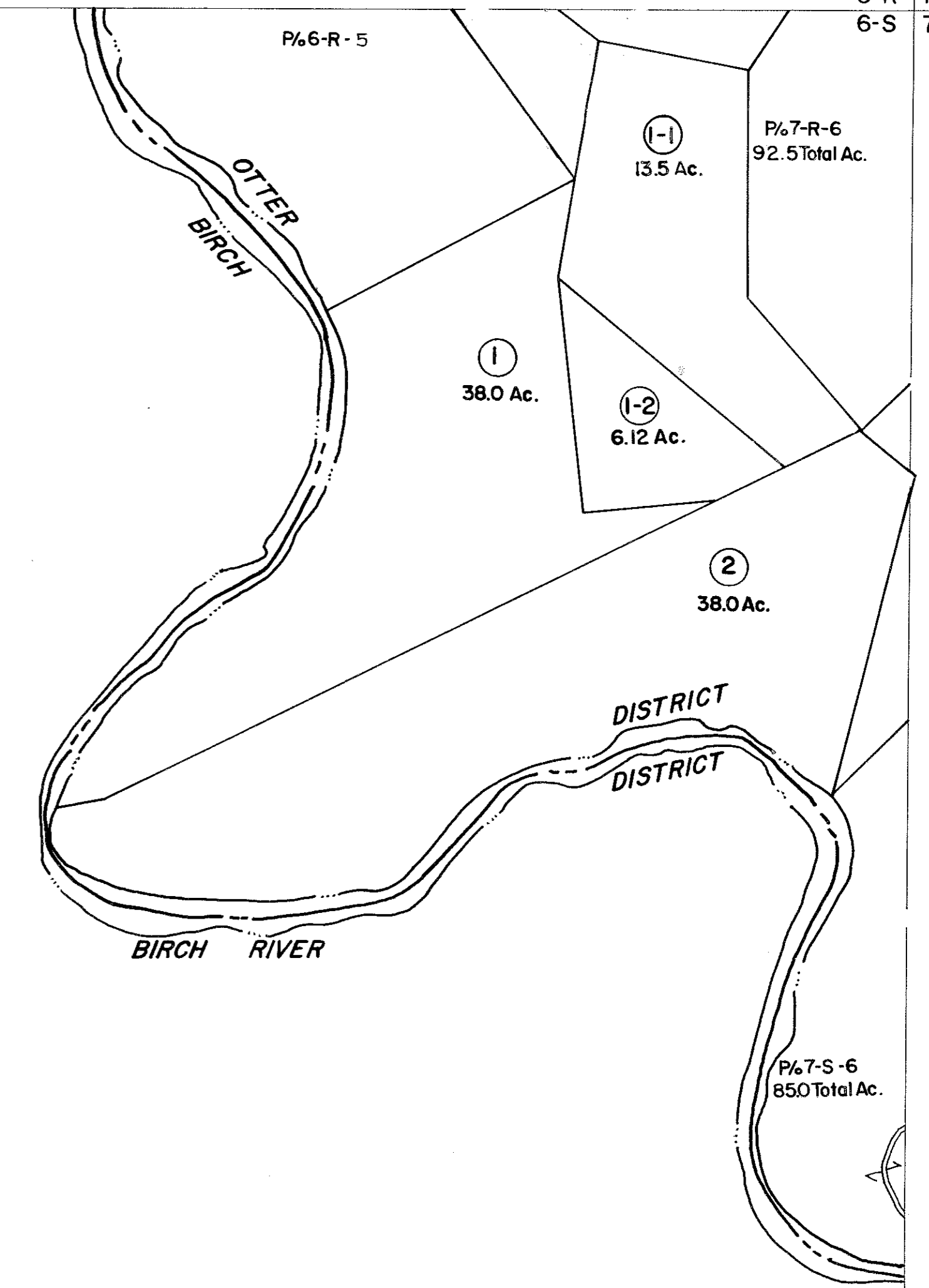


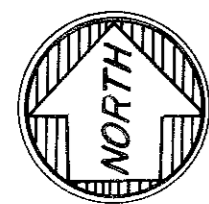
6-R
6-S

6-R 7-R
6-S 7-S



6-S

6-S 7-S
7-T



For Tax Purposes Only

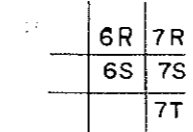
Prepared by
VOGT, IVERS AND ASSOCIATES
 ENGINEERS-ARCHITECTS
 CHARLESTON, W.VA.
 CINCINNATI, OHIO

Property line _____
 Edge of pavement or roadway - - - - -
 Corporation line - - - - -
 District line - - - - -
 County line - - - - -

Original lot line - - - - -
 Deed lot number (15)
 Parcel or index number (99)
 Improvement o
 Railroad

Revisions	
1	PARCELS 1-1, 1-2, ADDED 6-12-63
2	PW
3	Revised to 7-1-80
4	" " 7-1-83
5	7/1/84 RLB
6	Revised to 7-1-87
7	
8	

KEY MAP



BRAXTON COUNTY

STATE OF WEST VIRGINIA

Office of Assessor

DISTRICT

OTTER DISTRICT

SHEET NO: 6-S

Date, Aerial Photography: 4-22-60 Date, Map: 9-13-62
 Photo No: BR-14-166 Scale: 1" = 400'