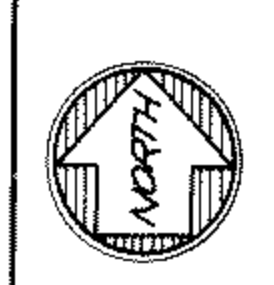
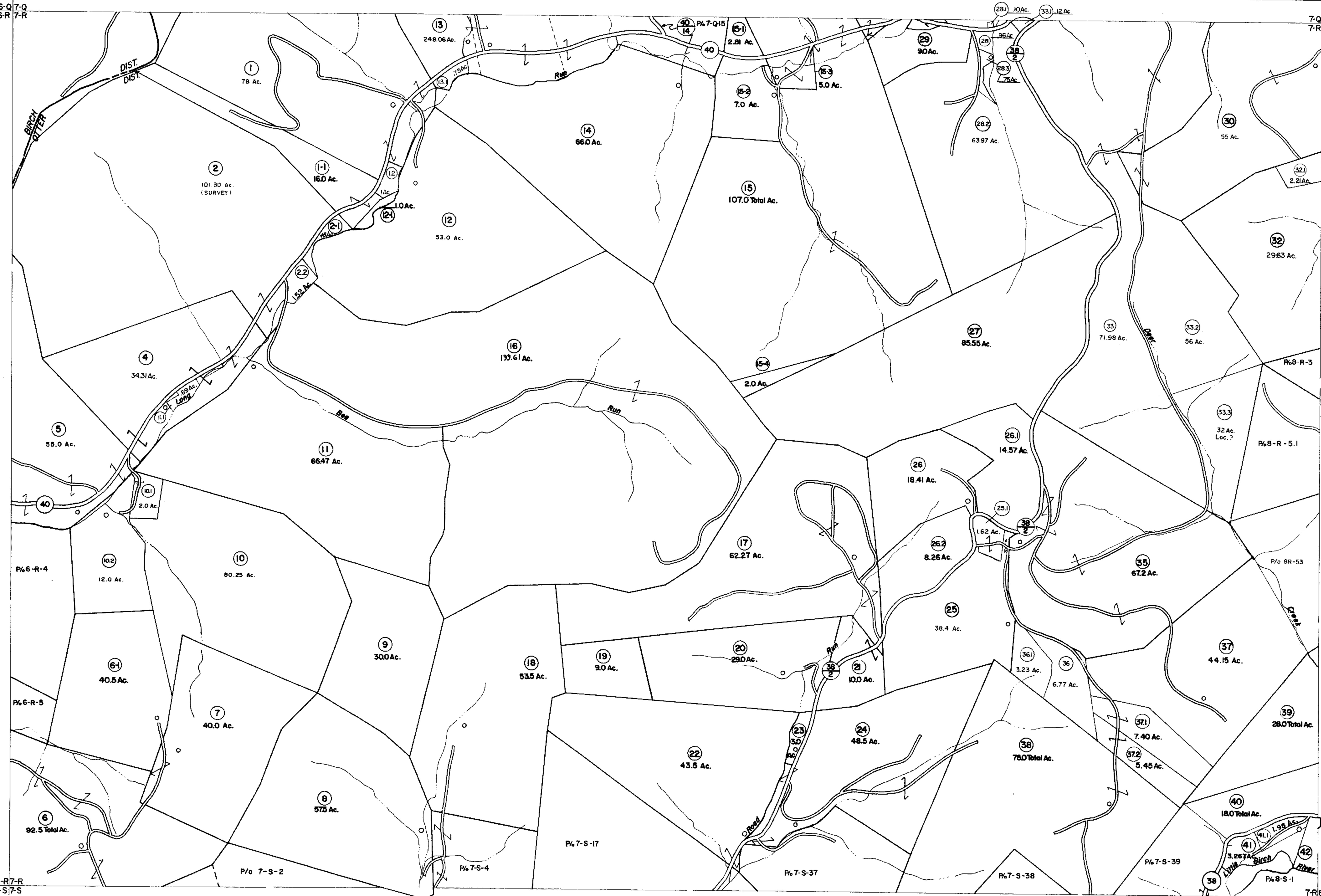


6-Q7-Q  
6-R7-R

7-Q8-Q  
7-R8-R

6-R7-R  
6-S7-S

7-R8-R  
7-S8-S



**For Tax Purposes Only**

Prepared by  
**VOGT, IVERS AND ASSOCIATES**  
 ENGINEERS-ARCHITECTS  
 CHARLESTON, W.VA.  
 CINCINNATI, OHIO

Property line ————  
 Edge of pavement or roadway ————  
 Corporation line - - - - -  
 District line - - - - -  
 County line - - - - -

Original lot line - - - - -  
 Dead lot number (15)  
 Parcel or index number (99)  
 Improvement (o)  
 Railroad (o)

Revisions			
1	PARCELS 1-1, 2-4, 6-1, 12-1, 15-1, 15-2	9	O.G.I.S. 1-1-95 J.E.B.
2	15-3, 15-4, 16-1 ADDED 8-24-03	10	OGIS 4/25/95 SAJ
3	Revised to P/6-R-4	11	5-1-97 J.E.B.
4	" 7-1-83 CBG	12	5-1-99 J.E.B.
5	7/1/84 RLB	13	ESI 5/30/01 REK
6	Revised to P/7-S-17	14	ESI 6/12/02 REK
7	Revised to P/7-S-37	15	5/1/03 S.B.H.
8	OGIS 2/10/91 DSH	16	4/5/04 S.B.H.
17	5/7/05 S.B.H.	20	4/14/09 S.B.H.
18	4/9/06 S.B.H.	21	3-19-10 H.D.
19	4/21/08 S.B.H.	22	4-7-11 H.S.
23	6/9/12 S.B.H.	24	

4/1/13  
2-20-16  
KEY MAP  
6-Q7-Q-80  
6-R7-R-88  
6-S7-S-89

**BRAXTON COUNTY**  
 STATE OF WEST VIRGINIA  
 Office of Assessor

DISTRICT  
**OTTER DISTRICT**

SHEET NO: **7-R**

Date, Aerial Photography: 4-22-60  
 Photo No. 80-1A-129  
 Date, Map: 8-14-62  
 Scale: 1" = 400'