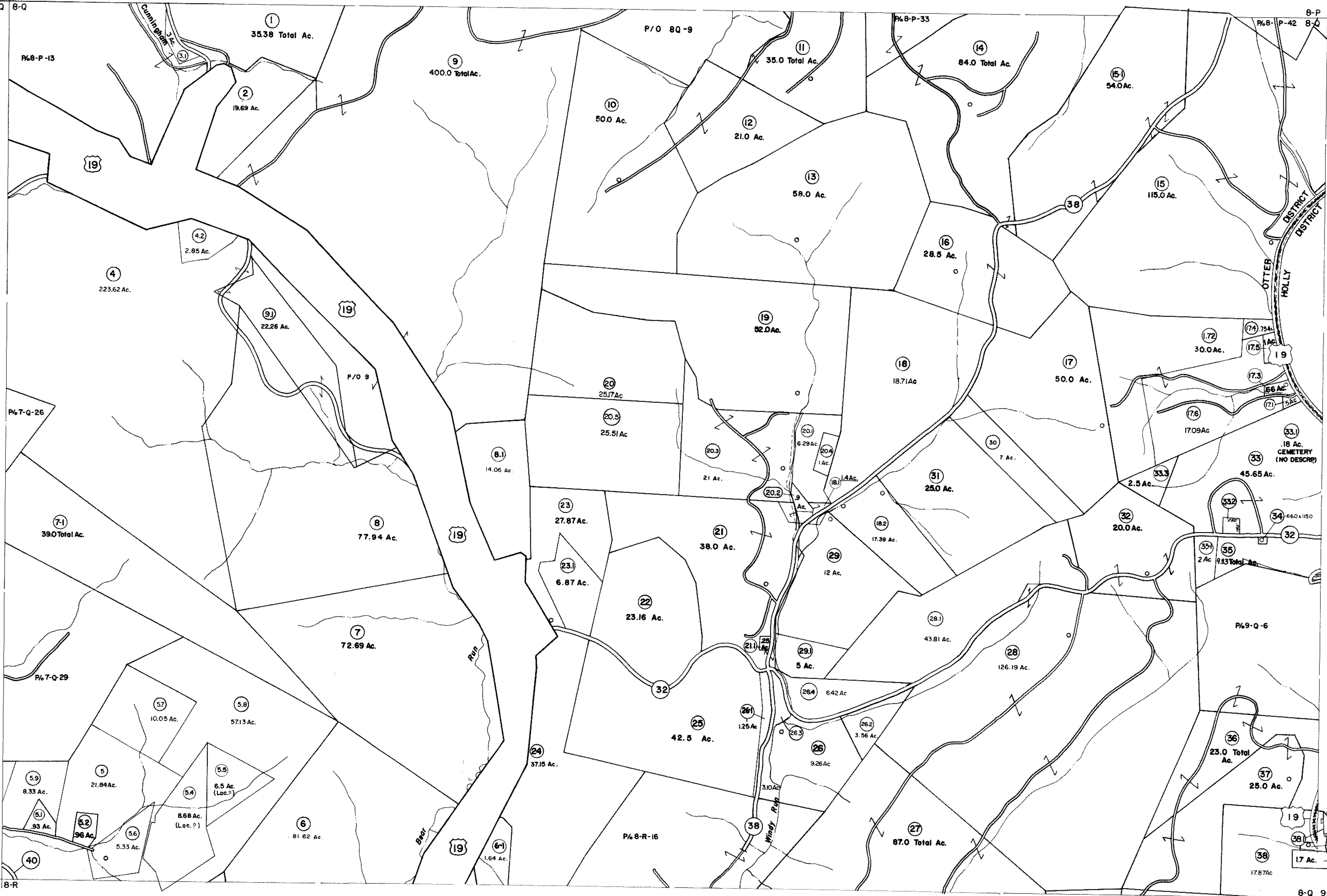


7-P 8-P
7-Q 8-Q

8-P 9-P
8-Q 9-Q



7-Q
7-R 8-R

8-Q 9-Q
8-R 9-R



For Tax Purposes Only

Prepared by
VOGT, IVERS AND ASSOCIATES
ENGINEERS-ARCHITECTS
CHARLESTON, W.VA.
CINCINNATI, OHIO

Property line	---
Edge of pavement or roadway	---
Corporation line	---
District line	---
County line	---

Original lot line	---
Deed lot number	(15)
Parcel or index number	(19)
Improvement	○
Railroad	—+—

Revisions			
1	ADD PARCELS NOS 3-1, 6-1, 7-1	9	Revised to 7-1-84
2	9-1, 9-2, 19-1, 17-1, 5-24-63	10	Revised to 7-1-85
3	2-16-75 Jack Reeves	11	Revised to 7-1-85
4	P/W	12	OGIS 2/10/91 DSH
5	Revised to 7-1-84	13	EXCALIBUR GRAPHICS 5/93
6	7-1-83	14	O.G.I.S. 1-1-95 J.E.B.
7	7/1/84 RLB	15	OGIS 4/25/95 SAJ
8	Revised to 7-1-85	16	O.G.I.S. 6-1-96 J.E.B.
17	5-1-97 J.E.B.	17	3/18/14 SBH
18	4-15-98 J.E.B.	18	2/17/15 SBH
19	6/12/02 REK	19	2-22-14 KEY MAP 4-45
20	5/3/05 SBH	20	7/8/9 P
21	4/9/06 SBH	21	7/18/0 92
22	4/14/09 SBH	22	7/8/9 R
23	5-19-10 4-45	23	
24	4-45	24	

BRAXTON COUNTY
STATE OF WEST VIRGINIA
Office of Assessor

DISTRICT
OTTER DISTRICT

SHEET NO: **8-Q**

Date, Aerial Photography: 4-22-60 Date, Map: 9-25-62
Photo No: RB-14-RX Scale: 1" = 400'