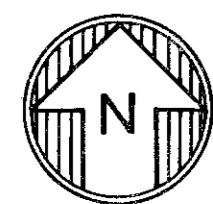
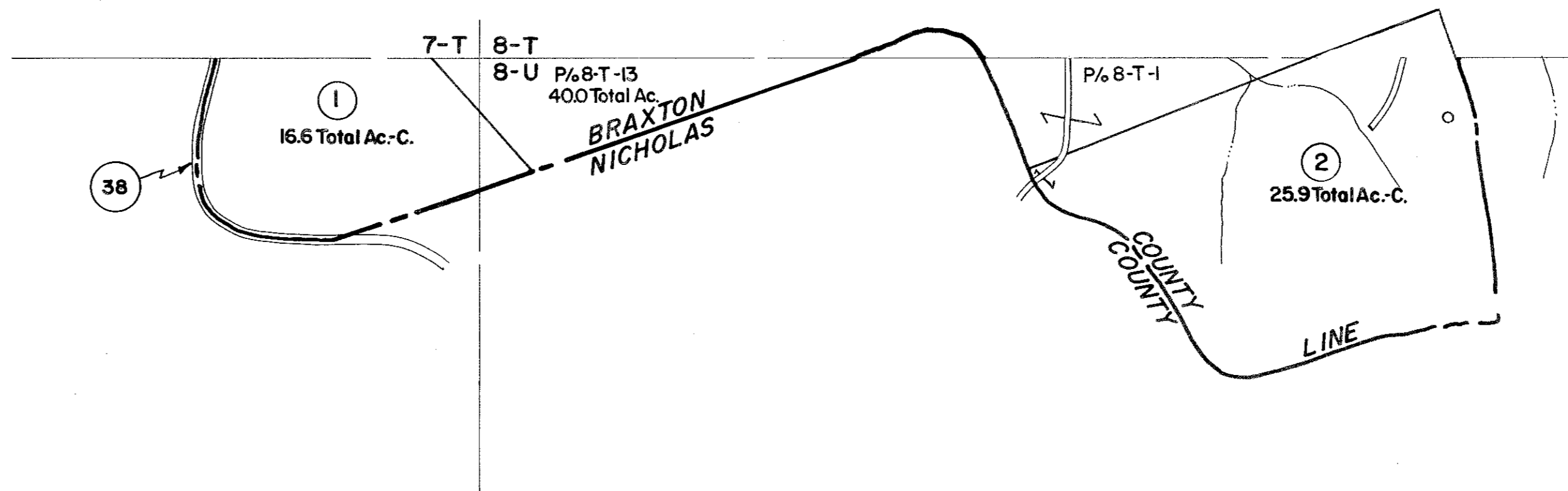


7-T
7-U

8-T
8-U



For Tax Purposes Only

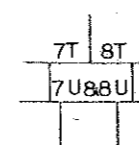
Prepared by
VOGT, IVERS AND ASSOCIATES
 ENGINEERS-ARCHITECTS
 CHARLESTON, W.VA.
 CINCINNATI, OHIO

Property line —————
 Edge of pavement or roadway - - - - -
 Corporation line - - - - -
 District line - - - - -
 County line - - - - -

Original lot line - - - - -
 Deed lot number (15)
 Parcel or index number (39)
 Improvement o
 Railroad ————

Revisions	
1	Revised to 7-1-80
2	" " 7-1-83
3	7/1/84 RLB
4	Revised to 7-1-87
5	
6	
7	
8	
9	
10	
11	
12	
13	
14	
15	
16	
17	
18	
19	
20	
21	
22	
23	
24	

KEY MAP



BRAXTON COUNTY

STATE OF WEST VIRGINIA

Office of Assessor

DISTRICT

OTTER DISTRICT

SHEET NO: 7-U & 8-U

Date, Aerial Photography: 4-22-60
 Photo No: BR-14-129

Date, Map: 10-2-62
 Scale: 1" = 400'