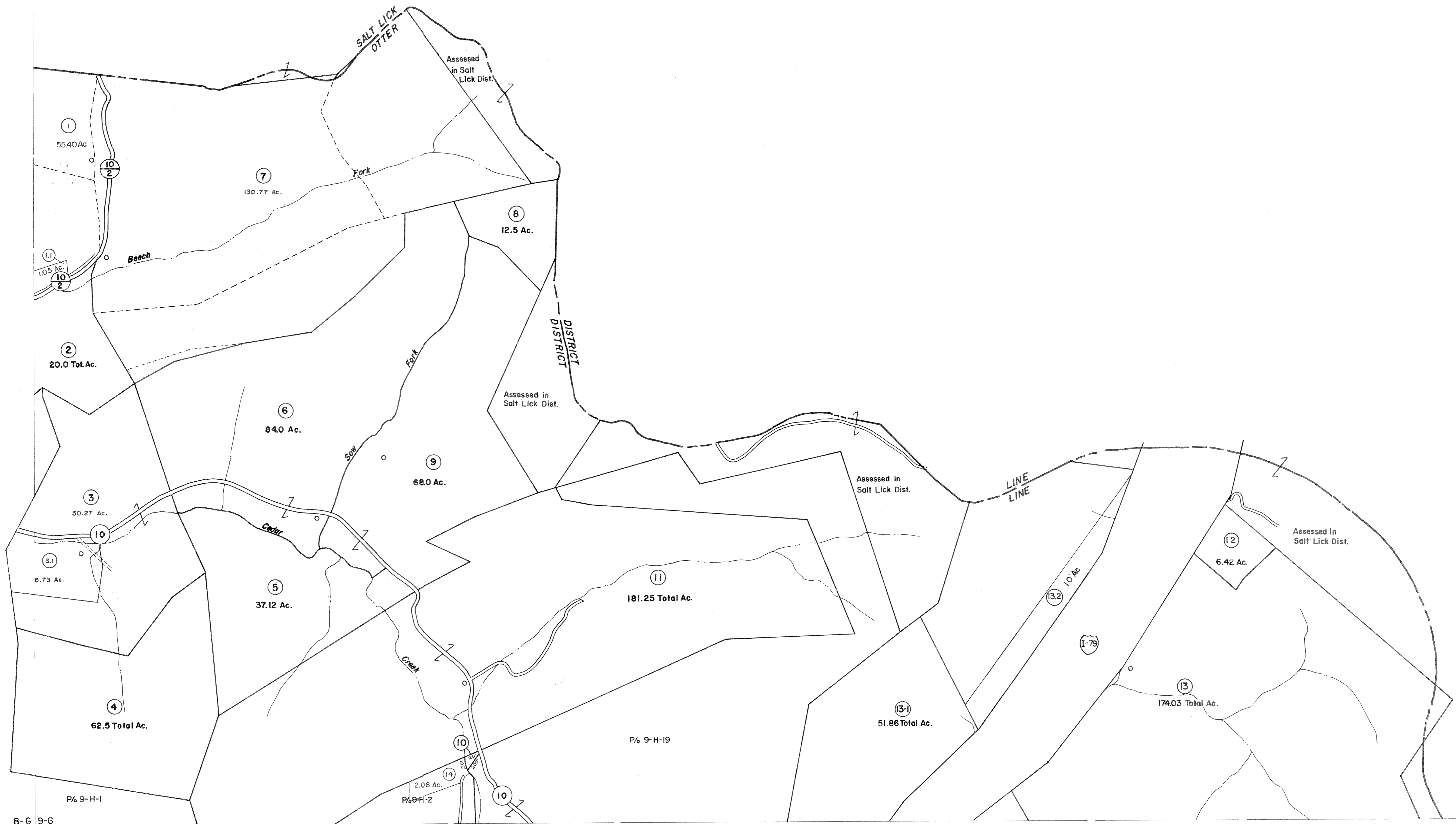
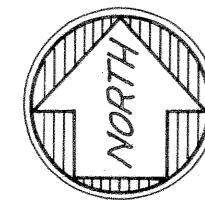


8-F  
8-G 9-G



8-G 9-G  
8-H 9-H

9-G  
9-H



For Tax Purposes Only

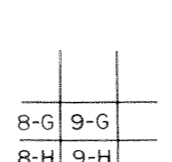
Prepared by  
**VOGT, IVERS AND ASSOCIATES**  
ENGINEERS-ARCHITECTS  
CHARLESTON, W.VA.  
CINCINNATI, OHIO

Property line —————  
Edge of pavement or roadway - - - - -  
Corporation line ————  
District line - - - - -  
County line - - - - -

Original lot line - - - - -  
Deed lot number (15)  
Parcel or index number (10)  
Improvement (P)  
Railroad (R)

Revisions	
1 PARCELS 1-1,1-2,7-1,7-2,7-3,13-1	9 O.G.I.S 1-1-84 J.E.B 17
2 ADDED 6-10-63	10 OGIS 4/20/95 SAJ 18
3 PVV	11 4/14/09 SBH 19
4 Revised to 7-1-84	12 3-19-10 H+S 20
5 " " 7-1-83 O.B.	13 " " " " 21
6 7/1/84 RLB	14 " " " " 22
7 Revised to 7-1-87	15 " " " " 23
8 OGIS 2/11/91 DSH	16 " " " " 24

KEY MAP



**BRAXTON COUNTY**

STATE OF WEST VIRGINIA  
Office of Assessor

DISTRICT  
**OTTER DISTRICT**

SHEET NO: 9-G

Date, Aerial Photography: 4-22-60 Date, Map: 8-14-62  
Photo No: BR-14-116 Scale: 1" = 400'