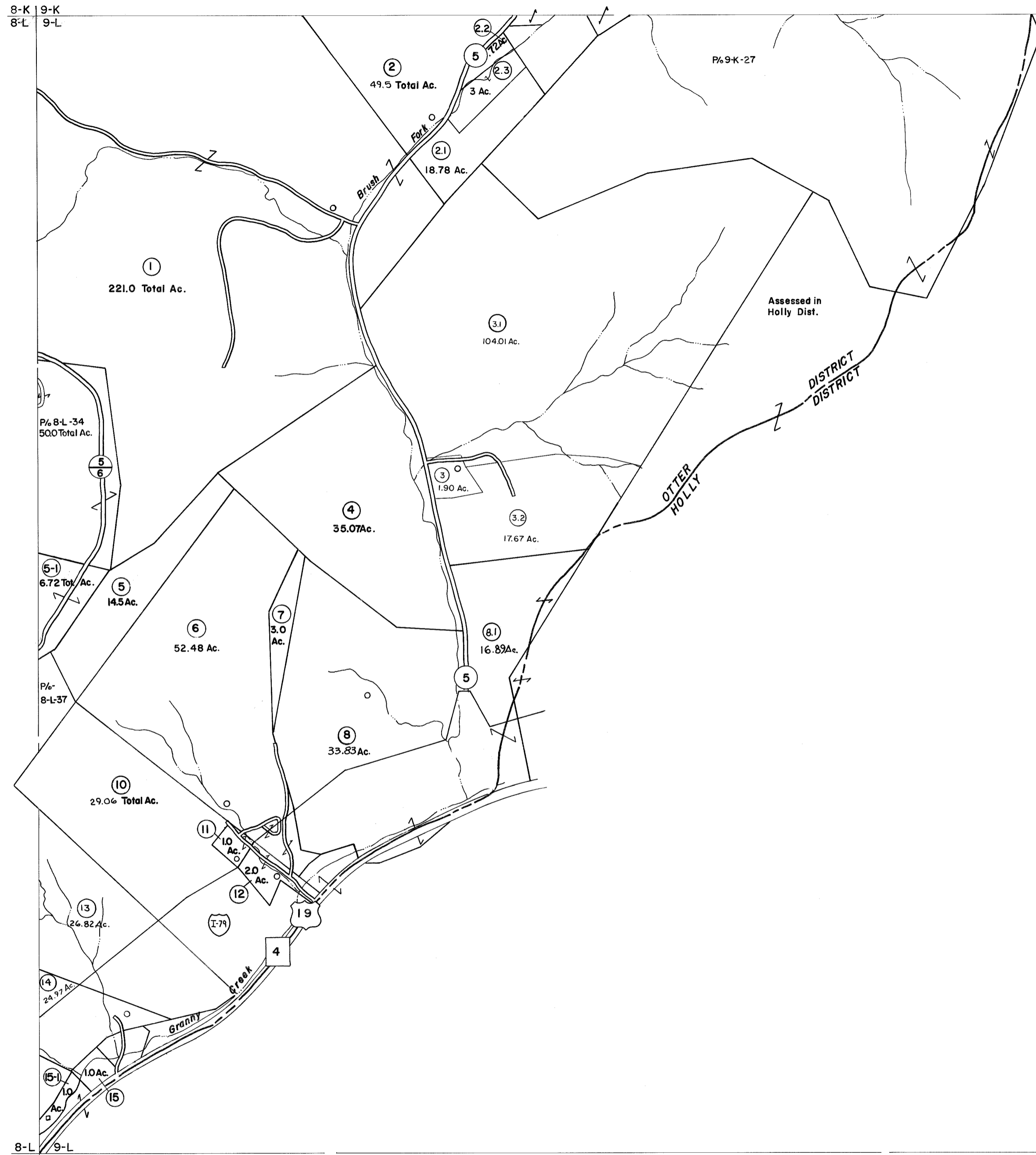


8-K 9-K
8-L 9-L

9-K
9-L



8-L 9-L
8-M

9-L



For Tax Purposes Only

Prepared by
VOGT, IVERS AND ASSOCIATES
 ENGINEERS-ARCHITECTS
 CHARLESTON, W.VA.
 CINCINNATI, OHIO

Property line	—————	Original lot line	-----
Edge of pavement or roadway	-----	Deed lot number	(15)
Corporation line	-----	Parcel or index number	(16)
District line	-----	Improvement	o
County line	-----	Railroad	—+—+—+—

Revisions			
1	PARCELS 5-1, 11-1 & 15-1 ADDED	9	6/9/12 S&H 17
2	6-3-63	10	18
3	PW	11	19
4	revised to 7-1-80	12	20
5	" " 7-1-83 RLB	13	21
6	7/1/84	14	22
7	revised to 7-1-87	15	23
8	5/3/05	16	24

KEY MAP

8K	9K
8L	9L
8M	9M

BRAXTON COUNTY
 STATE OF WEST VIRGINIA
 Office of Assessor

DISTRICT
OTTER DISTRICT

SHEET NO: 9-L

Date, Aerial Photography: 4-22-60 Date, Map: 9-5-62
 Photo No: BR-14-120 Scale: 1" = 400'