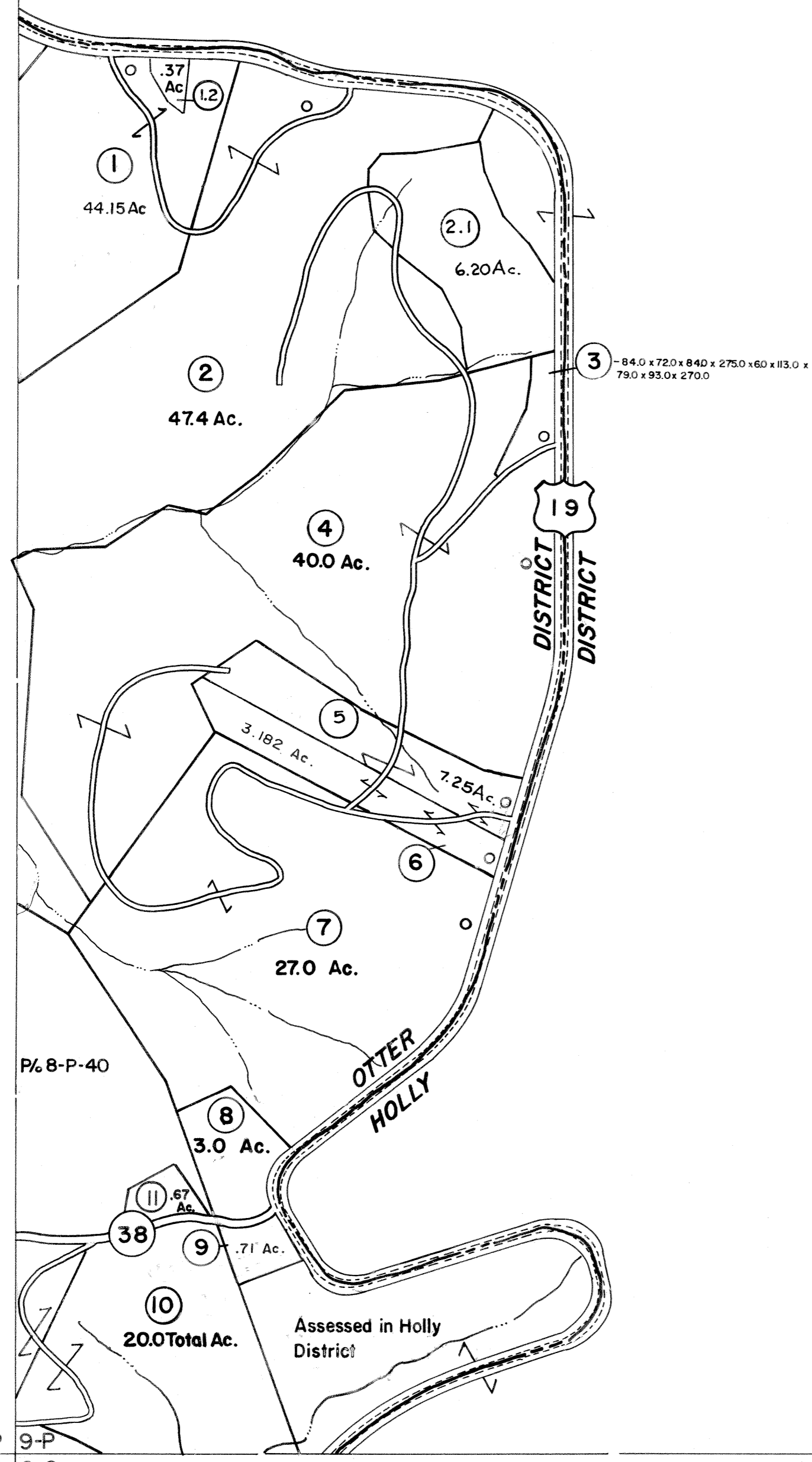


8-N
8-P

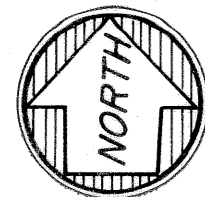
9-N
9-P

8-P
8-Q

9-P
9-Q



For Tax Purposes Only



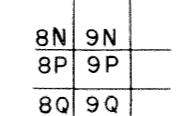
Prepared by
VOGT, IVERS AND ASSOCIATES
ENGINEERS-ARCHITECTS
CHARLESTON, W.VA.
CINCINNATI, OHIO

Property line _____
 Edge of pavement or roadway - - - - -
 Corporation line - - - - -
 District line - - - - -
 County line - - - - -

Original lot line - - - - -
 Deed lot number (15) _____
 Parcel or index number (22) _____
 Improvement _____
 Railroad _____

		Revisions	
1	PARCEL NO. 1-1 ADDED 5-1-63	9	5-1-97 J.E.B
2	PW	10	4/16/07 SBH
3	Revised to 7-1-80	11	4-8-11 H & S
4	"	12	
5	7/1/84	13	
6	Revised to 7-1-86	14	
7	EXCALIBUR GRAPHICS 5/93	15	
8	O.G.I.S. 6-1-96	16	
		17	
		18	
		19	
		20	
		21	
		22	
		23	
		24	

KEY MAP



BRAXTON COUNTY

STATE OF WEST VIRGINIA

Office of Assessor

DISTRICT

OTTER DISTRICT

SHEET NO: 9-P

Date, Aerial Photography: 4-22-60 Date, Map: 9-24-62
Photo No: BR-14-123 Scale: 1" = 400'