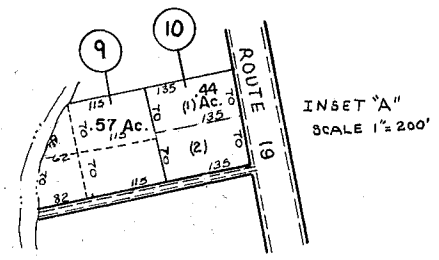
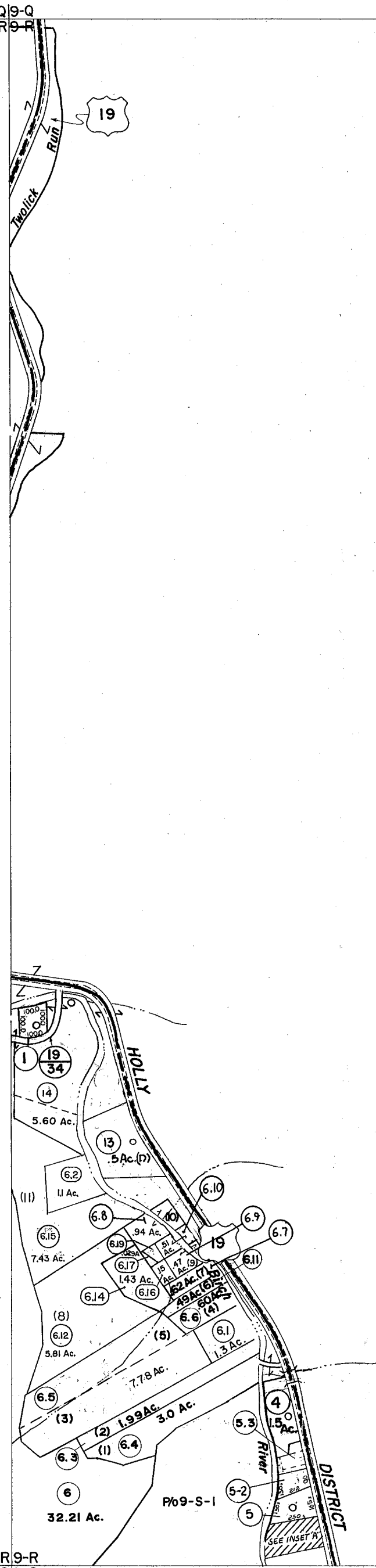


8-09-Q  
8-R9-R

8-R9-R  
8-S9-S



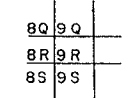
For Tax Purposes Only

Prepared by  
**VOGT, IVERS AND ASSOCIATES**  
ENGINEERS-ARCHITECTS  
CHARLESTON, W.VA.  
CINCINNATI, OHIO

Property line	—————	Original lot line	-----
Edge of pavement or roadway	=====	Deed lot number	(15)
Corporation line	-----	Parcel or index number	(9)
District line	-----	Improvement	(9)
County line	-----	Railroad	—+—+—

Revisions			
1	2-20-73	Jack Reeves	9
2	PW		10
3	Revised to 7-1-80		11
4	" " 7-1-83		12
5	7/1/84	RLB	13
6	Revised to 1-1-88		14
7	EXCALIBUR GRAPHICS	5/93	15
8	O.G.I.S	1-1-95	16
9	OGIS	4/20/95	17
10	O.G.I.S	6-1-96	18
11		4-15-98	19
12	ESI	5/30/01	20
13		4/9/06	21
14		3-19-10	22
15		4-8-11	23
16			24

KEY MAP



# BRAXTON COUNTY

STATE OF WEST VIRGINIA  
Office of Assessor

DISTRICT  
**OTTER DISTRICT**

SHEET NO: **9-R**

Date, Aerial Photography: 4-22-60  
Photo No: BR-14-126

Date, Map: 9-26-62  
Scale: 1" = 400'