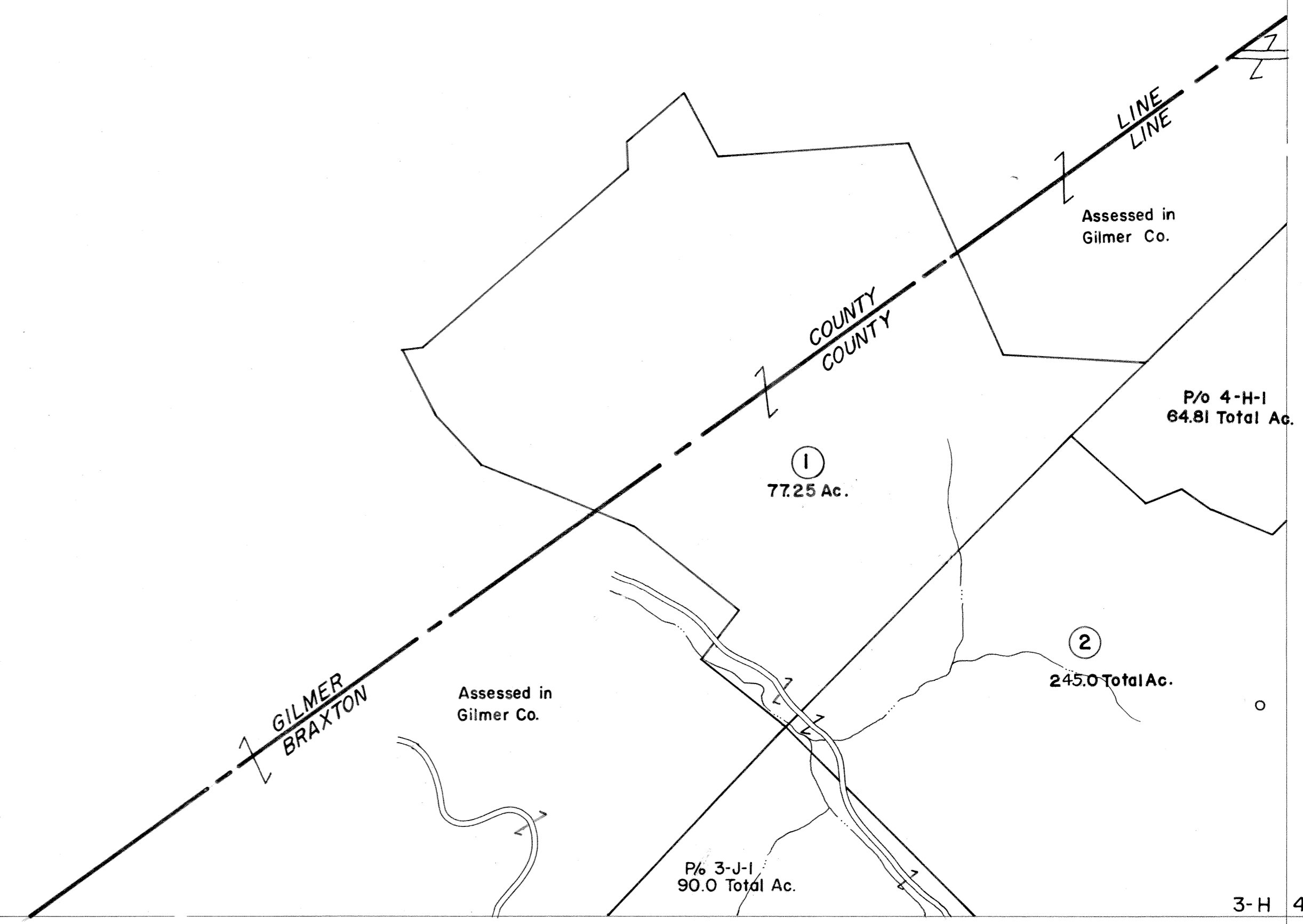
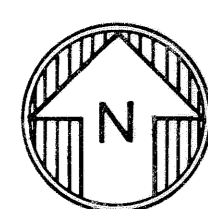


3-H 4-H
4-G



3-H
2-J 3-J

3-H 4-H
3-J 4-J

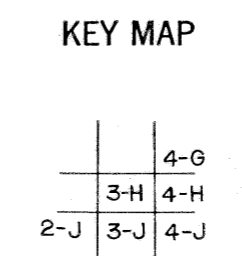


For Tax Purposes Only

Prepared by
VOGT, IVERS AND ASSOCIATES
 ENGINEERS-ARCHITECTS
 CHARLESTON, W.VA.
 CINCINNATI, OHIO

Property line	—————	Original lot line	- - - - -
Edge of pavement or roadway	— · — · —	Deed lot number	(15)
Corporation line	— · — · —	Parcel or index number	⊙
District line	— · — · —	Improvement	⊙
County line	— · — · —	Railroad	⊙

Revisions	
1	Revised to 7-1-80
2	7-1-83
3	7-1-84 RLB
4	
5	
6	
7	
8	
9	
10	
11	
12	
13	
14	
15	
16	
17	
18	
19	
20	
21	
22	
23	
24	



BRAXTON COUNTY
 STATE OF WEST VIRGINIA
 Office of Assessor

DISTRICT
OTTER DISTRICT

SHEET NO: 3-H

Date, Aerial Photography: 4-22-60 Date, Map: 10-1-62
 Photo No: BR-22-8 Scale: 1"=400'