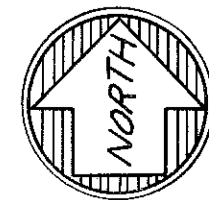
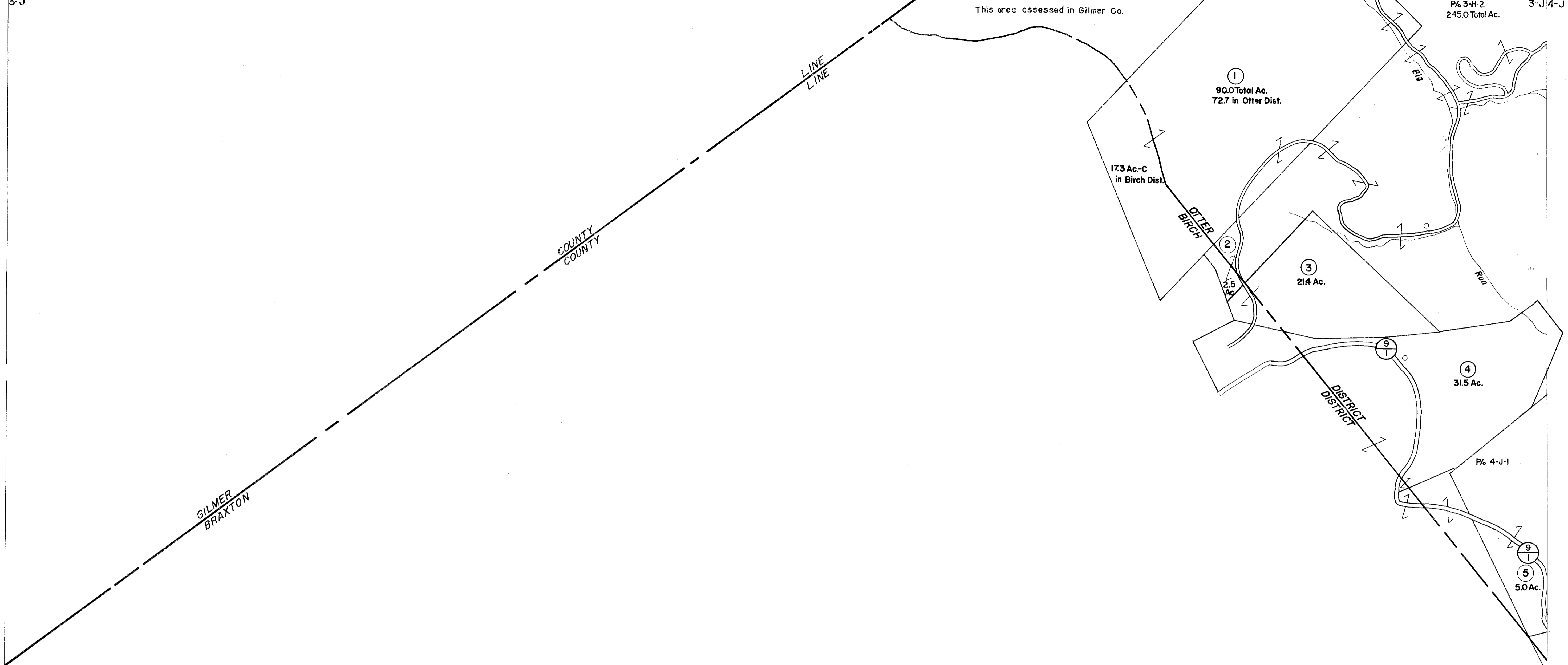


3-H
3-J

3-H 4-H
3-J 4-J

3-J

3-J 4-J
4-K



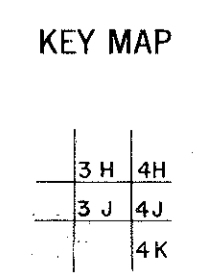
For Tax Purposes Only

Prepared by
VOGT, IVERS AND ASSOCIATES
ENGINEERS-ARCHITECTS
CHARLESTON, W.VA.
CINCINNATI, OHIO

Property line	———
Edge of pavement or roadway	———
Corporation line	———
District line	———
County line	———

Original lot line	———
Deed lot number	(15)
Parcel or index number	(9)
Improvement	○
Railroad	———

Revisions	
1	Revised to 7-1-80 DF 9
2	7-1-82 RLB 10
3	7/1/84 RLB 11
4	Revised to 7-1-82 DF 12
5	13
6	14
7	15
8	16
	17
	18
	19
	20
	21
	22
	23
	24



BRAXTON COUNTY

STATE OF WEST VIRGINIA

Office of Assessor

DISTRICT
OTTER DISTRICT

SHEET NO: 3-J

Date, Aerial Photography: 4-22-60 Date, Map: 9-5-62
Photo No: BR-22-9 Scale: 1" = 400'