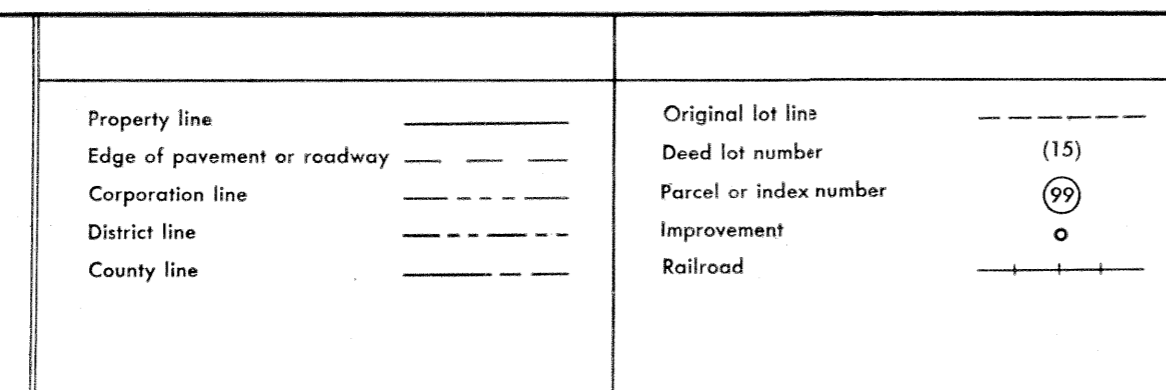


For Tax Purposes Only

Prepared by
VOGT, IVERS AND ASSOCIATES
 ENGINEERS-ARCHITECTS
 CHARLESTON, W.VA.
 CINCINNATI, OHIO



Revisions			
1	PARCELS 1-1, 2-1, 4-1, 4-2, 8-1, 8-2,	9	O.G.I.S 1-1-95 J.E.B 17
2	12-1, 14-1, 15-2, 15-1, 24-1, 24-2, 26-1,	10	OGIS 4/25/95 SAJ 18
3	27-1, 27-2, 27-3, 31-1, 33-1, 41-1,	11	O.G.I.S 6-1-96 J.E.B 19
4	ADDED 6-11-93	12	5-1-99 J.E.B 20
5	Revised to 7-80	13	ESI 4-27-00 REK 21
6	" " 7-1-83	14	ESI 6/11/02 REK 22
7	7/1/84 RLB	15	4/9/06 SBH 23
8	Revised to 7-1-87	16	4/15/07 SBH 24

KEY MAP

4G	5G	6G
4H	5H	6H
4J	5J	6J

BRAXTON COUNTY

STATE OF WEST VIRGINIA

Office of Assessor

DISTRICT
OTTER DISTRICT

SHEET NO: 5-H

Date, Aerial Photography: 4-22-60 Date, Map: 9-17-62
 Photo No: BR-14-183 Scale: 1" = 400'