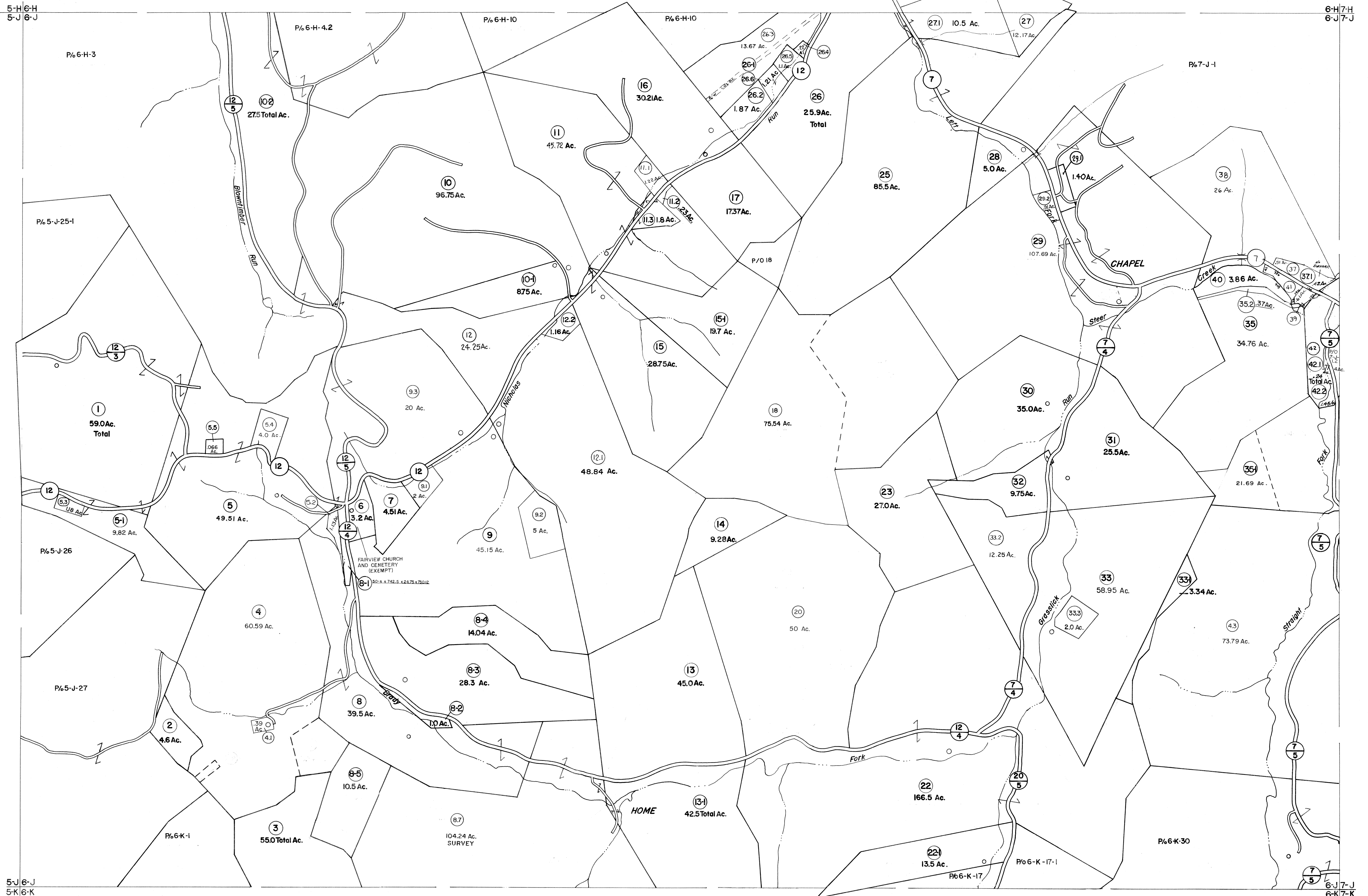


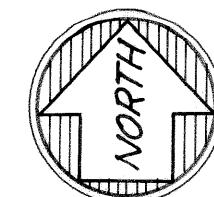
5-H 6-H
5-J 6-J

6-H 7-H
6-J 7-J



5-J 6-J
5-K 6-K

6-J 7-J
6-K 7-K



For Tax Purposes Only

Prepared by
VOGT, IVERS AND ASSOCIATES
 ENGINEERS-ARCHITECTS
 CHARLESTON, W.VA.
 CINCINNATI, OHIO

Property line —————
 Edge of pavement or roadway ————
 Corporation line - - - - -
 District line - - - - -
 County line - - - - -

Original lot line - - - - -
 Deed lot number (15) ————
 Parcel or index number (10) ————
 Improvement ————
 Railroad ————

Revisions			
1	ADD PARCELS NOS. 5-1, 8-1, 8-2,	9	Revised to 7-1-80
2	8-3, 8-4, 8-5, 8-6, 8-7, 10-1, 13-1, 15-1,	10	Revised to 7-1-87
3	2-1, 26-1, 33-1, 35-1, 22-1, 10-2,	11	OGIS 2/10/91 DSH
4	6-10-63	12	EXCALIBUR GRAPHICS 5/93
5	PW	13	O.G.I.S 1-1-95 J.E.B
6	Revised to 7-1-80	14	OGIS 4/25/95 SAJ
7	" " 7-1-83	15	O.G.I.S 6-1-96 J.E.B
8	7/1/84 RLB	16	5-1-97 J.E.B
17	4-15-98 J.E.B	18	5-1-99 J.E.B
19	ES1 4-27-00 REK	20	ES1 5/24/01 REK
21	ES1 6/11/02 REK	22	5/11/03 S.B.H
23	5/5/04 S.B.H	24	5/7/05 S.B.H

4/9/06 S.B.H
 KEY MAP
 5H 6H 7H
 5J 6J 7J
 5K 6K 7K

BRAXTON COUNTY
 STATE OF WEST VIRGINIA
 Office of Assessor

DISTRICT
OTTER DISTRICT
 SHEET NO: 6-J
 Date, Aerial Photography: 4-22-60 Date, Map: 9-7-62
 Photo No: BR-14-175 Scale: 1" = 400'