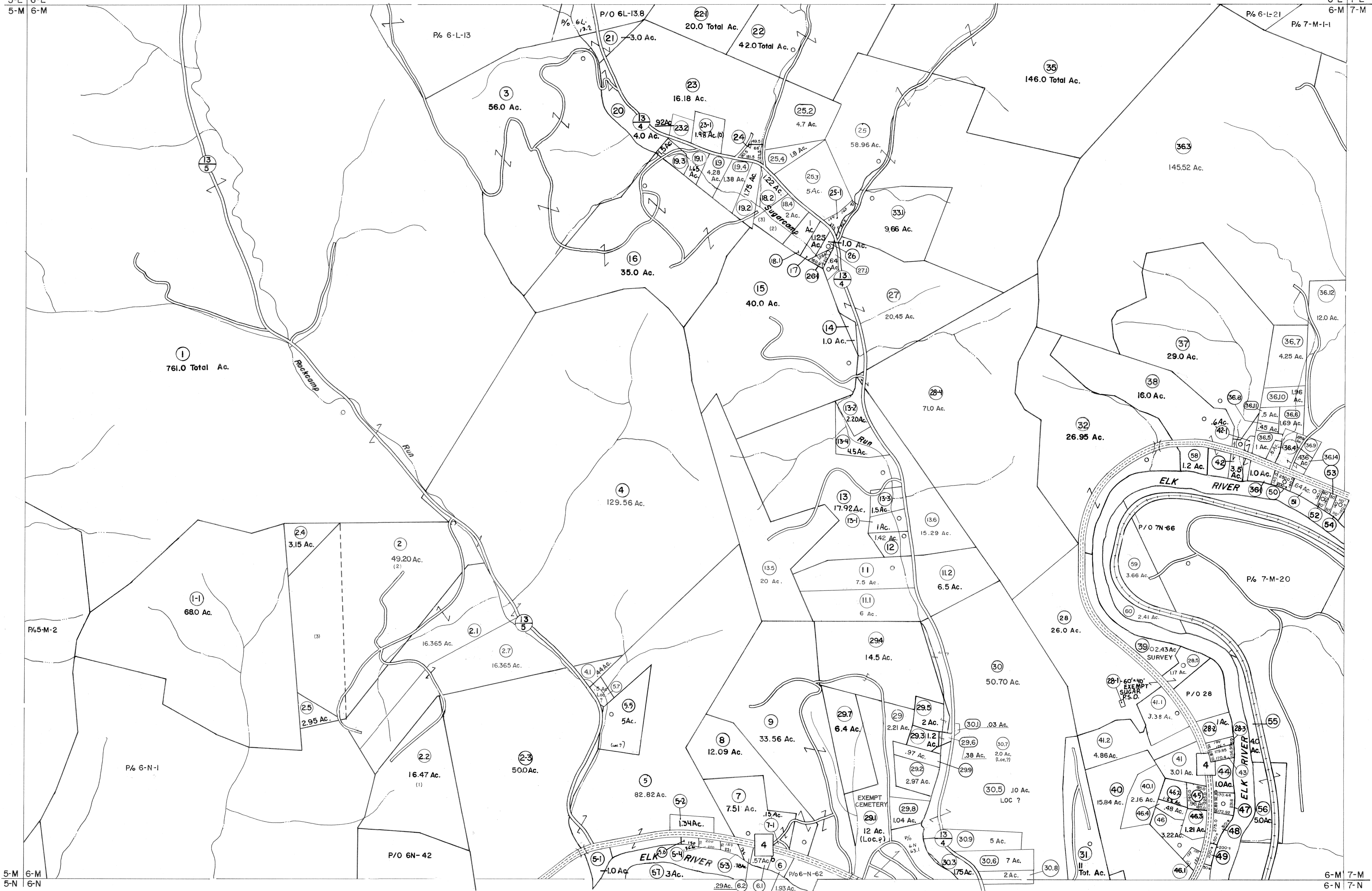


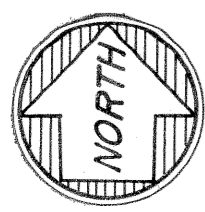
5-L 6-L
5-M 6-M

6-L 7-L
6-M 7-M



5-M 6-M
5-N 6-N

6-M 7-M
6-N 7-N



For Tax Purposes Only

Prepared by
VOGT, IVERS AND ASSOCIATES
 ENGINEERS-ARCHITECTS
 CHARLESTON, W.VA.
 CINCINNATI, OHIO

Property line	—————	Original lot line	-----
Edge of pavement or roadway	-----	Deed lot number	(15)
Corporation line	-----	Parcel or index number	(20)
District line	-----	Improvement	o
County line	-----	Railroad	—+—+—+—

Revisions			
1	PARCELS 1-1, 2-1, 2-2, 2-3, 5-1, 2-2, 1	9	Revised to 7-1-85
2	26-1, 29-1, 36-1, ADDED 6-6-83	10	Revised to 7-1-85
3	PARCEL 36-2 ADDED 6-17-83	11	Revised to 7-1-85
4	2-2-0 JACK RECOVER	12	Revised to 1-1-88
5	PW	13	OGIS 2/10/91 DSH
6	Revised to 7-1-80	14	EXCALIBUR GRAPHICS 5/93
7	7-1-83	15	O.G.I.S 6-1-96 J.E.B
8	7/1/84 R.L.B	16	5-1-97 J.E.B
17	5-1-99 J.E.B	18	ESI 4-27-00 REK
19	ESI 5/24/01 REK	20	ESI 6/12/02 REK
21	5/1/03 S.B.H	22	5/5/04 S.B.H
23	4/9/06 S.B.H	24	4/15/07 S.B.H

KEY MAP

5L	6L	7L
5M	6M	7M
5N	6N	7N

BRAXTON COUNTY
 STATE OF WEST VIRGINIA
 Office of Assessor

DISTRICT	
OTTER DISTRICT	
SHEET NO: 6-M	
Date, Aerial Photography: 4-22-60	Date, Map: 9-12-62
Photo No: BR-14-171	Scale: 1" = 400'