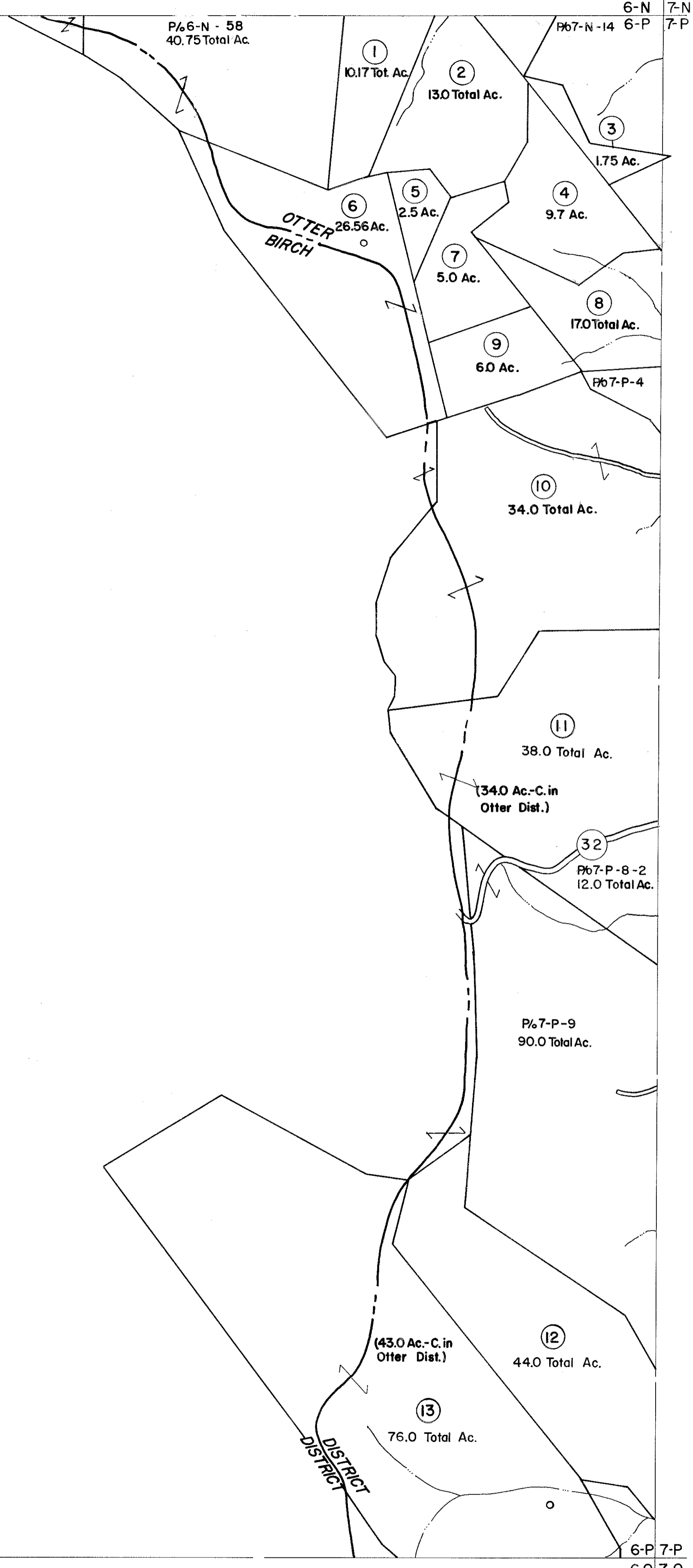


6-N
6-P

6-N
7-P

6-P
6-Q

6-P
7-Q



For Tax Purposes Only

Prepared by
VOGT, IVERS AND ASSOCIATES
 ENGINEERS-ARCHITECTS
 CHARLESTON, W.VA.
 CINCINNATI, OHIO

Property line	—————
Edge of pavement or roadway	——— ———
Corporation line	----- -----
District line	- - - - - - - - - -
County line	————— —————

Original lot line	----- -----
Deed lot number	(15)
Parcel or index number	(29)
Improvement	o
Railroad	———x———

Revisions			
1	Revised to 7-1-80	9	17
2	" " 7-1-83	10	18
3	7/1/84 RLB	11	19
4	Revised to 7-1-87	12	20
5		13	21
6		14	22
7		15	23
8		16	24

KEY MAP

6-N	7-N
6-P	7-P
6-Q	7-Q

BRAXTON COUNTY
 STATE OF WEST VIRGINIA
 Office of Assessor

DISTRICT
OTTER DISTRICT

SHEET NO: **6-P**

Date, Aerial Photography: 4-22-60 Date, Map: 9-10-62
 Photo No: BR-14-169 Scale: 1" = 400'