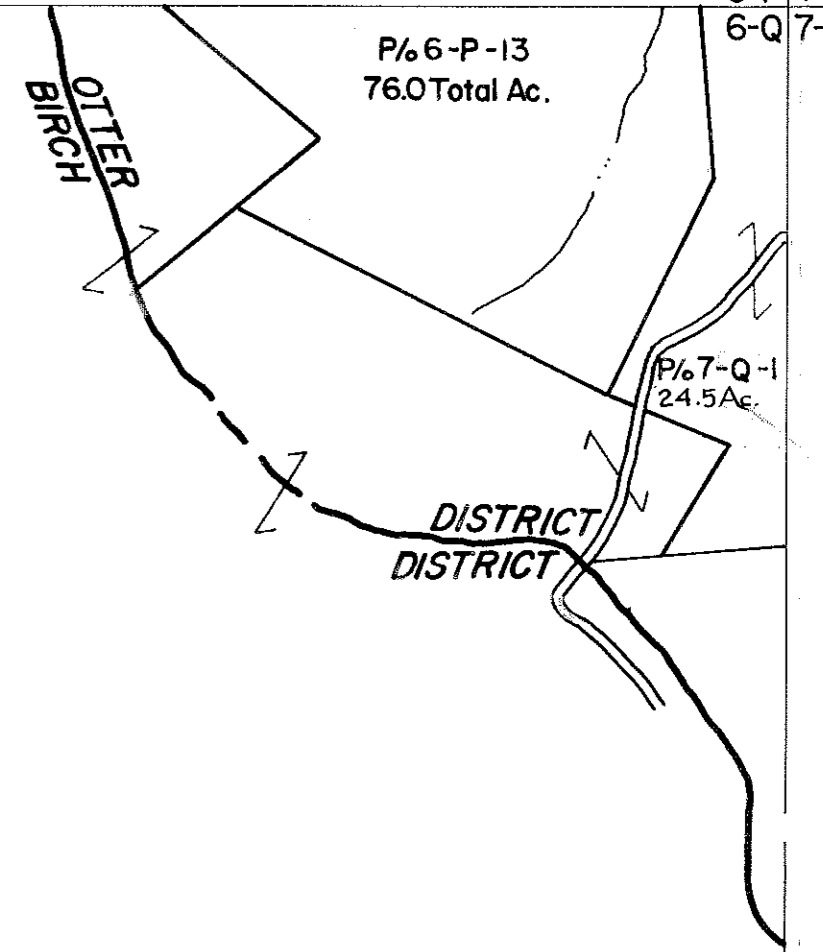


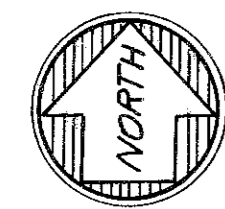
6-P
6-Q

6-P 7-P
6-Q 7-Q



6-Q

6-Q 7-Q
6-R 7-R



For Tax Purposes Only

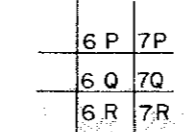
Prepared by
VOGT, IVERS AND ASSOCIATES
 ENGINEERS-ARCHITECTS
 CHARLESTON, W.VA.
 CINCINNATI, OHIO

Property line _____
 Edge of pavement or roadway - - - -
 Corporation line - - - - -
 District line - - - - -
 County line - - - - -

Original lot line - - - - -
 Dead lot number (15)
 Parcel or index number (15)
 Improvement (15)
 Railroad (15)

Revisions	
1	Pw
2	Revised to 7-1-80
3	" " 7-1-83 RLB
4	7/1/84 RLB
5	
6	
7	
8	

KEY MAP



BRAXTON COUNTY

STATE OF WEST VIRGINIA

Office of Assessor

DISTRICT

OTTER DISTRICT

SHEET NO: 6-Q

Date, Aerial Photography: 4-22-60
 Photo No: BR-14-168

Date, Map: 9-3-62
 Scale: 1" = 400'