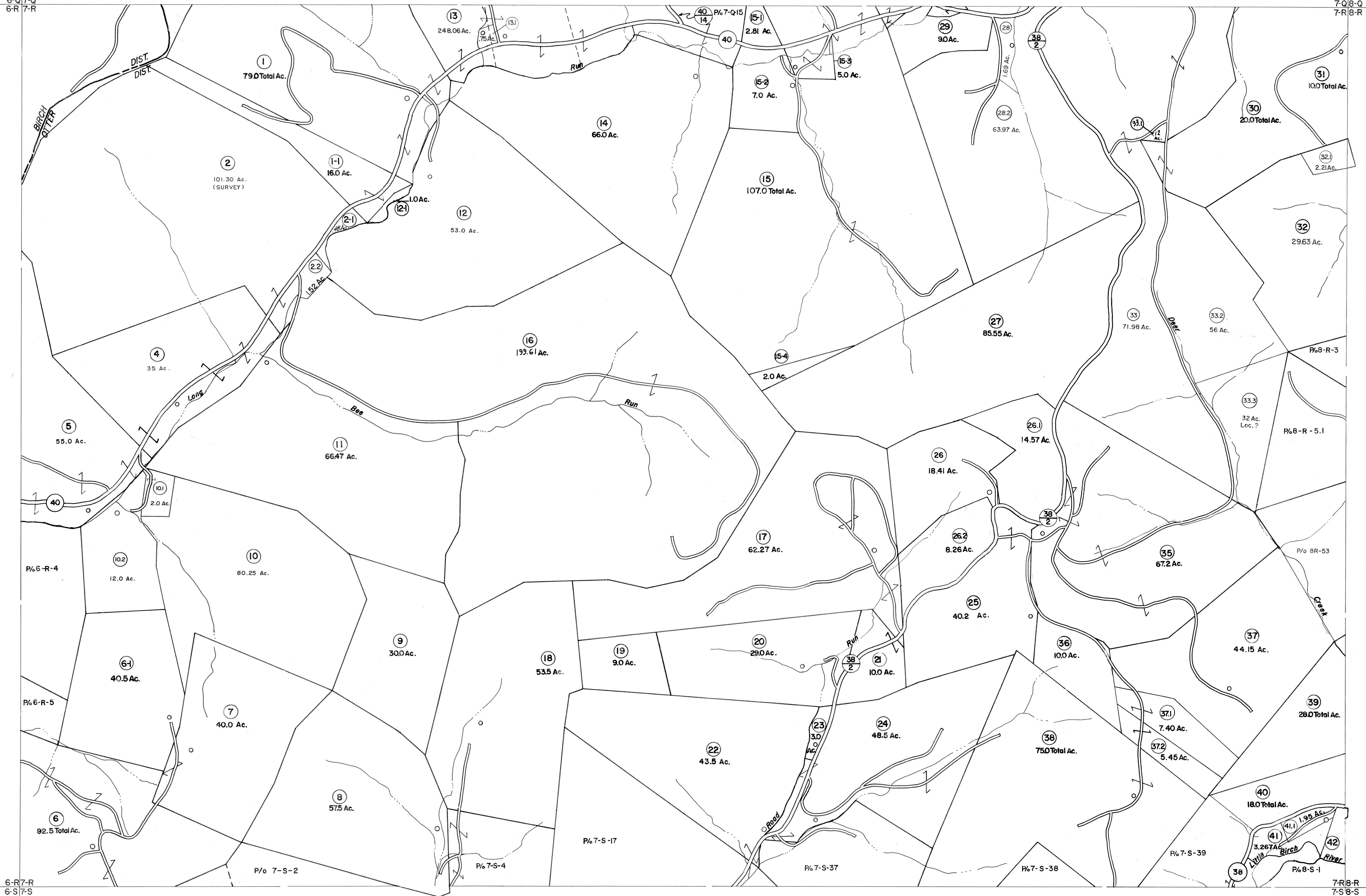


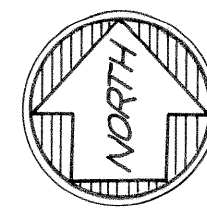
6-0 7-0
6-R 7-R

7-0 8-0
7-R 8-R



6-R 7-R
6-S 7-S

7-R 8-R
7-S 8-S



For Tax Purposes Only

Prepared by
VOGT, IVERS AND ASSOCIATES
 ENGINEERS-ARCHITECTS
 CHARLESTON, W.VA.
 CINCINNATI, OHIO

Property line	—————	Original lot line	- - - - -
Edge of pavement or roadway	—————	Deed lot number	(15)
Corporation line	—————	Parcel or index number	(10)
District line	—————	Improvement	o
County line	—————	Railroad	—+—+—+—

Revisions			
1	PARCELS 1-1,2-4,6-1,12-1,15-1, 15-2,	9	O.G.I.S. 1-1-95 J.E.B. 17 5/7/05 S.B.H.
2	15-3,15-4,16-1 ADDED 5-24-83	10	O.G.I.S. 4/25/95 S.A.J. 18 4/9/06 S.B.H.
3	Revised to 7-1-80	11	5-1-97 J.E.B. 19
4	" 7-1-83 O.B.G.	12	5-1-99 J.E.B. 20
5	7/1/84 RLB	13	ES1 5/30/01 REK 21
6	Revised to 7-1-87 S.D.F.	14	ES1 6/12/02 REK 22
7	Revised to 7-1-88 S.D.F.	15	5/1/03 S.B.H. 23
8	O.G.I.S. 2/10/91 DSH	16	4/5/04 S.B.H. 24

KEY MAP

6Q 7-0	8Q
6R 7-R	8R
6S 7-S	8S

BRAXTON COUNTY
 STATE OF WEST VIRGINIA
 Office of Assessor

DISTRICT
OTTER DISTRICT

SHEET NO: **7-R**

Date, Aerial Photography: 4-22-60 Date, Map: 9-14-62
 Photo No: BR-14-162 Scale: 1" = 400'