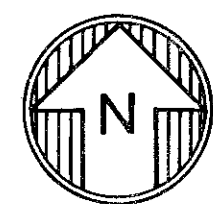
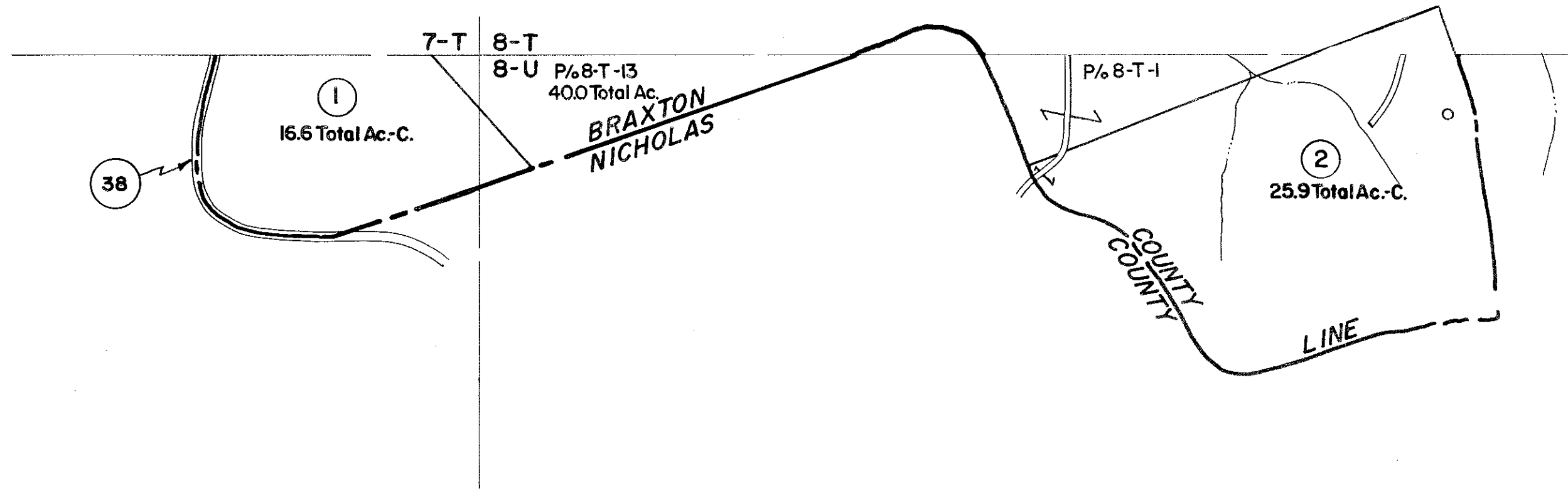


7-T
7-U

8-T
8-U



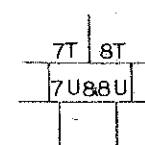
For Tax Purposes Only

Prepared by
VOGT, IVERS AND ASSOCIATES
 ENGINEERS-ARCHITECTS
 CHARLESTON, W.VA.
 CINCINNATI, OHIO

Property line	—————	Original lot line	- - - - -
Edge of pavement or roadway	— · — · —	Deed lot number	(15)
Corporation line	— · — · —	Parcel or index number	⊙
District line	— · — · —	Improvement	○
County line	— · — · —	Railroad	—+—+—

Revisions		
1	Revised to 7-1-80	9
2	" " 7-1-83	10
3	7/1/84 RLB	11
4	Revised to 7-1-87	12
5		13
6		14
7		15
8		16
		17
		18
		19
		20
		21
		22
		23
		24

KEY MAP



BRAXTON COUNTY

STATE OF WEST VIRGINIA

Office of Assessor

DISTRICT

OTTER DISTRICT

SHEET NO: 7-U & 8-U

Date, Aerial Photography: 4-22-60
 Photo No: BR-14-129

Date, Map: 10-2-62
 Scale: 1" = 400'