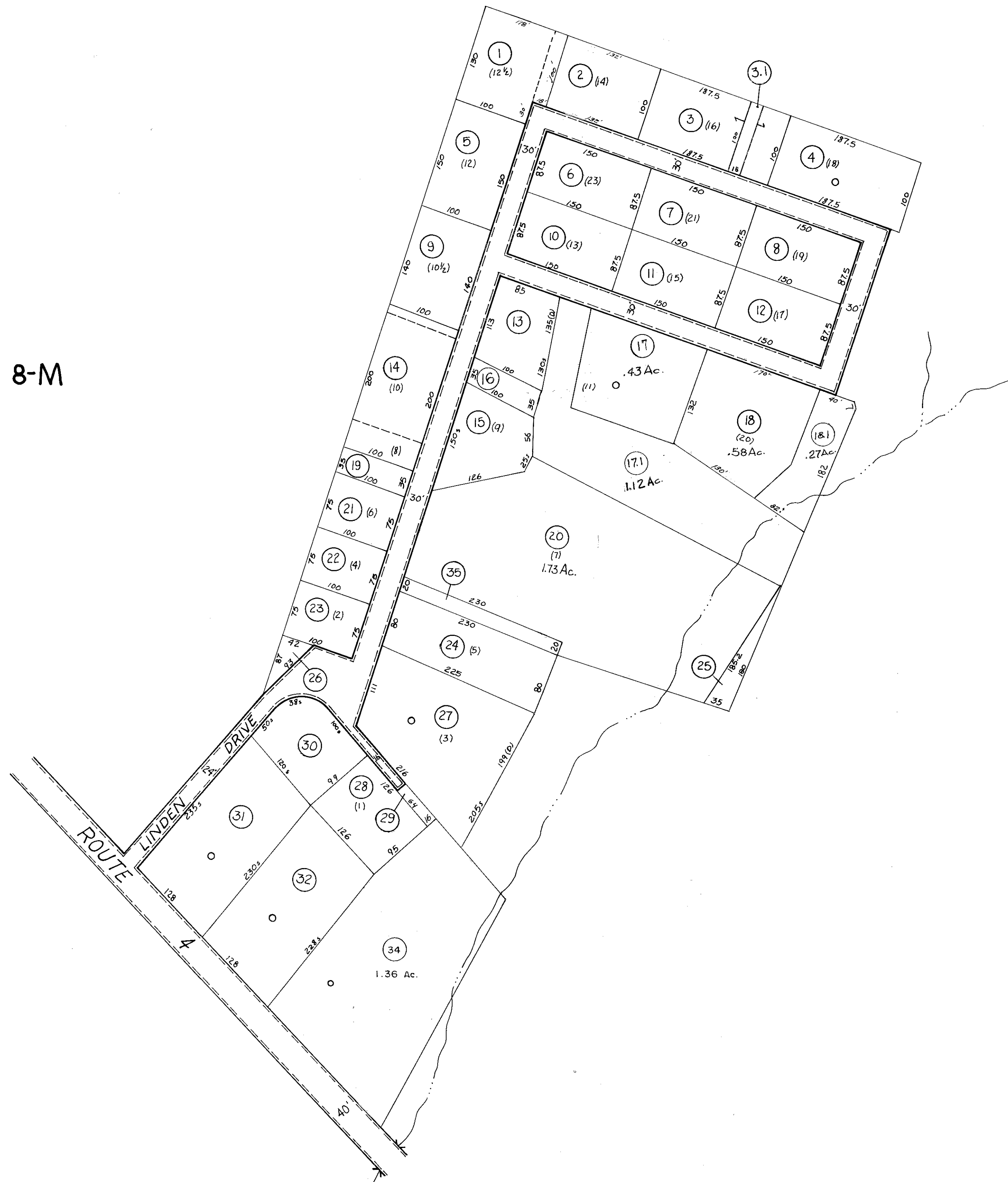


8-M



8-M

8-M

For Tax Purposes Only

Prepared by  
ASSESSMENT EQUALIZATION DIV.  
STATE TAX COMMISSIONER  
CHARLESTON, W.VA.

LEGEND	
Property line	—
Edge of pavement or roadway	—
Corporation line	—
District line	—
County line	—

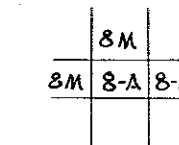
Original lot line	—
Dead lot number	(15)
Parcel or index number	(22)
Improvement	○
Railroad	—

REVISIONS	
1	2-12-73 Jack Reeves
2	Revised to 7-1-73
3	" " 7-1-73 C.B.G.
4	7/1/84 RLB
5	5-1-97 J.E.B.
6	
7	
8	

RESTRICTION

All tax maps created under the provisions of reappraisal legislation are the property of the State of West Virginia and the reproduction, copying, distribution or sale of such tax maps or any copies thereof without the written permission of the State Tax Commissioner is prohibited by law.

KEY MAP



BRAXTON COUNTY

STATE OF WEST VIRGINIA

Office of Assessor

DISTRICT

OTTER DISTRICT

SHEET NO: 8-A

Date, Aerial Photography:  
Photo No:

Date, Map: 2-12-73  
Scale: 1" = 100'