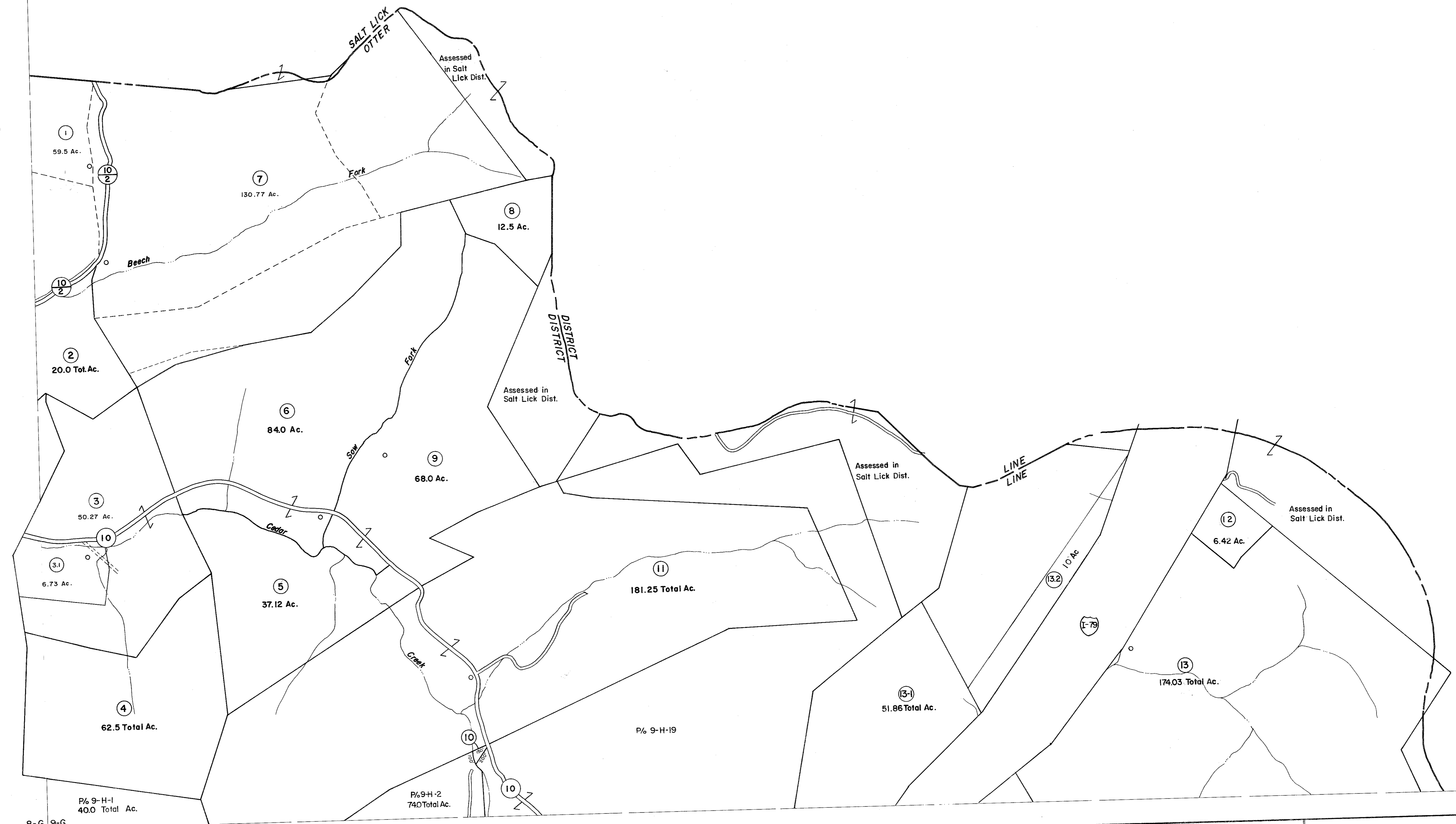


8-F  
8-G 9-G



8-G 9-G  
8-H 9-H

**For Tax Purposes Only**

Prepared by  
**VOGT, IVERS AND ASSOCIATES**  
ENGINEERS-ARCHITECTS

CHARLESTON, W.VA.  
CINCINNATI, OHIO

Property line	-----
Edge of pavement or roadway	-----
Corporation line	-----
District line	-----
County line	-----

Original lot line	-----
Deed lot number	-----
Parcel or index number	-----
Improvement	-----
Railroad	-----

Revisions	
1	PARCELS 1-1,1-2,7-17,2,7,3,13-1
2	ADDED 6-10-63
3	P/W
4	Revised to 7-1-84
5	" " 7-1-83
6	7/1/84 RLB
7	Revised to 7-1-87
8	OGIS 2/11/91 DSH

KEY MAP

8-G 9-G	17
8-H 9-H	18

**BRAXTON COUNTY**

STATE OF WEST VIRGINIA

Office of Assessor

DISTRICT **OTTER DISTRICT**

**SHEET NO: 9-G**

Date, Aerial Photography: 4-22-60  
Photo No: BR-14-116

Date, Map: 8-14-62  
Scale: 1" = 400'