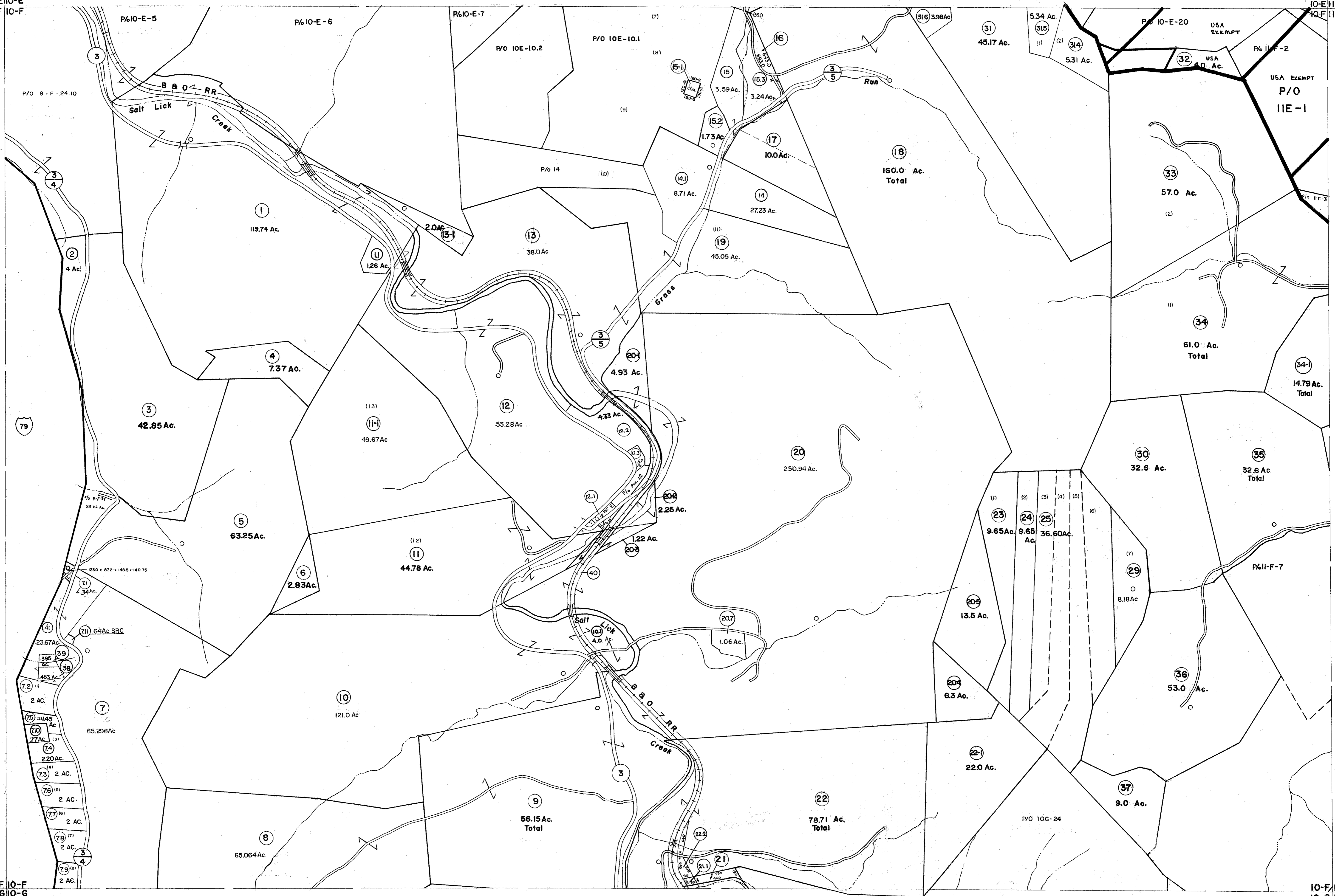


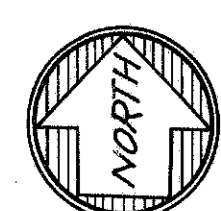
9-E10-E
9-F10-F

10-E11-E
10-F11-F



9-F10-F
9-G10-G

10-F11-F
10-G11-G



For Tax Purposes Only

Prepared by
VOGT, IVERS AND ASSOCIATES
 ENGINEERS-ARCHITECTS
 CHARLESTON, W.VA.
 CINCINNATI, OHIO

Property line	---	Original lot line	---
Edge of pavement or roadway	---	Deed lot number	(15)
Corporation line	---	Parcel or index number	(99)
District line	---	Improvement	o
County line	---	Railroad	o

Revisions		Date	By
1	PARCELS 7-1,11-1,13-1,15-1,20-1	9/15/07	S&H
2	20-2,20-3,20-4,20-5,22-1,34-1	3-18-10	H&S
3	37-1 ADDED 6-25-63	4-7-11	H&S
4	PARCEL 15-1 ADDED 10-3-63	4-2-14	H&S
5	8-31-77 VM	2/19/15	S&H
6	NOVEMBER, 1981 TRL		
7	Revised to 7-1-83		
8	7-1-84 L.E.S.		
9	Revised to 7-1-85		
10	July, 1987 TRL		
11	Revised to 1-1-88 DE		
12	EXCALIBUR GRAPHICS 5/93		
13	O.G.I.S 6-1-96 J.E.B.		
14	ESI 4-27-00 REK		
15	5/5/04 S&H		
16	5/10/05 S&H		

KEY MAP
 9-E10-E11-E
 9-F10-F11-F
 9-G10-G11-G

BRAXTON COUNTY
 STATE OF WEST VIRGINIA
 Office of Assessor

DISTRICT
SALT LICK DISTRICT
 SHEET NO: 10-F
 Date, Aerial Photography: 4-20-60
 Photo No: BR-14-102
 Date, Map: 4-5-62
 Scale: 1" = 400'