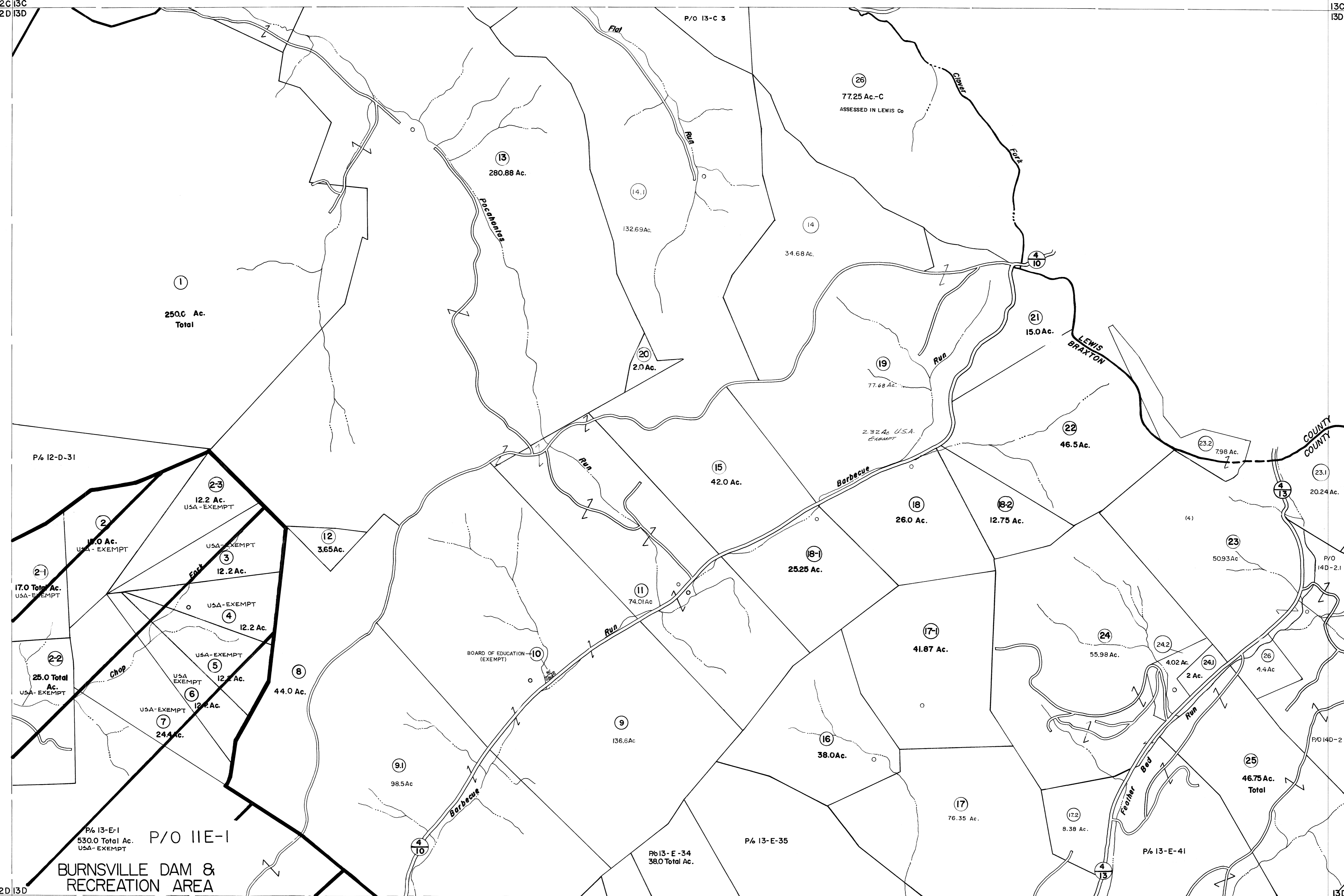


12C 13C
12D 13D

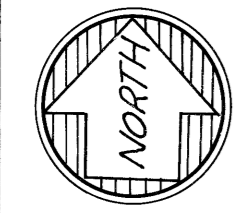
13C
13D 14D

12D 13D
12E 13E

13D 14D
13E 14E



For Tax Purposes Only



Prepared by
VOGT, IVERS AND ASSOCIATES
 ENGINEERS-ARCHITECTS
 CHARLESTON, W.VA.
 CINCINNATI, OHIO

Property line	—————
Edge of pavement or roadway	—————
Corporation line	—————
District line	—————
County line	—————

Original lot line	—————
Deed lot number	(15)
Parcel or index number	(20)
Improvement	o
Railroad	—————

Revisions			
1	PARCELS 2-1, 2-2, 2-3, 17-1, 18-1,	9	OGIS 2/11/91 DSH 17 2/19/15 SBH
2	18-2 ADDED 6-26-63	10	0.6.15 6-1-96 J.E.B. 18 2/14/17 SLS
3	PARCEL 9-1 ADDED 7-2-63	11	5/7/05 SBH 19
4	5-2-6-77 SRJ	12	4/15/07 SBH 20
5	November 1981 TRL	13	4/22/08 SBH 21
6	Revised 10-1-83	14	4/12/09 SBH 22
7	7-1-84 L.E.S.	15	4-7-11 H.S. 23
8	Revised 6-1-87	16	4-2-14 H.S. 24

KEY MAP

BRAXTON COUNTY
 STATE OF WEST VIRGINIA
 Office of Assessor

DISTRICT
SALT LICK DISTRICT
 SHEET NO: 13-D
 Date, Aerial Photography: 4-20-60 Date, Map: 4-24-62
 Photo No: BR-14-39 Scale: 1" = 400'