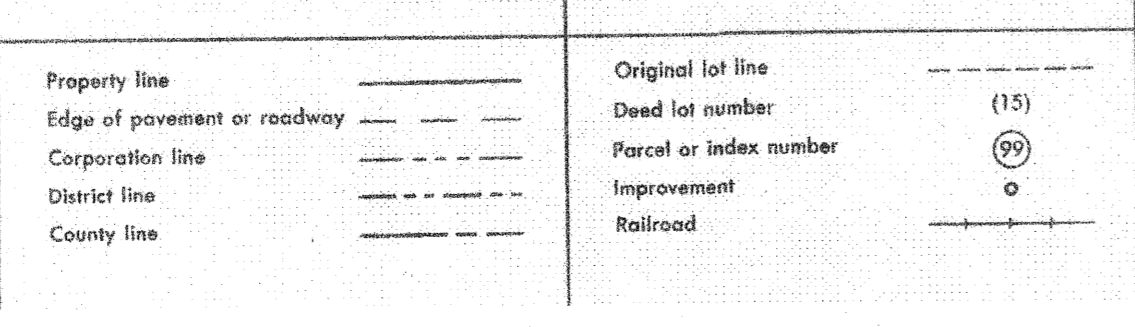


For Tax Purposes Only

Prepared by
VOGT, IVERS AND ASSOCIATES
 ENGINEERS-ARCHITECTS
 CHARLESTON, W.VA.
 CHIPPINWATI ROAD



Revisions								
1	PARCELS 1-1, 10-1, 27-1 ADDED	9	4-15-98	J.E.B.	17	4/9/06	S.B.H.	
2	6-27-63	10	ES1	4-27-00	REK	18	4/20/08	S.B.H.
3	5-31-77	11	ES1	5/24/01	REK	19	3-18-10	44.5
4	November, 1981	12	ES1	6/11/02	REK	20	4-2-14	44.5
5	JULY 1, 1983	13	5/1/03		S.B.H.	21	2-21-16	44.5
6	7-1-84	14	L.E.S.	5/5/04	S.B.H.	22	2/14/17	S.L.S.
7	July, 1987	15	5/7/05		S.B.H.	23		

KEY MAP
 12G 13 G 14G
 12H 13 H 14H
 12J 13 J 14J

BRAXTON COUNTY
 STATE OF WEST VIRGINIA
 Office of Assessor

DISTRICT
SALT LICK DISTRICT

SHEET NO: **13-H**
 Date, Aerial Photography: 4-22-60 Date, Map: 4-26-62