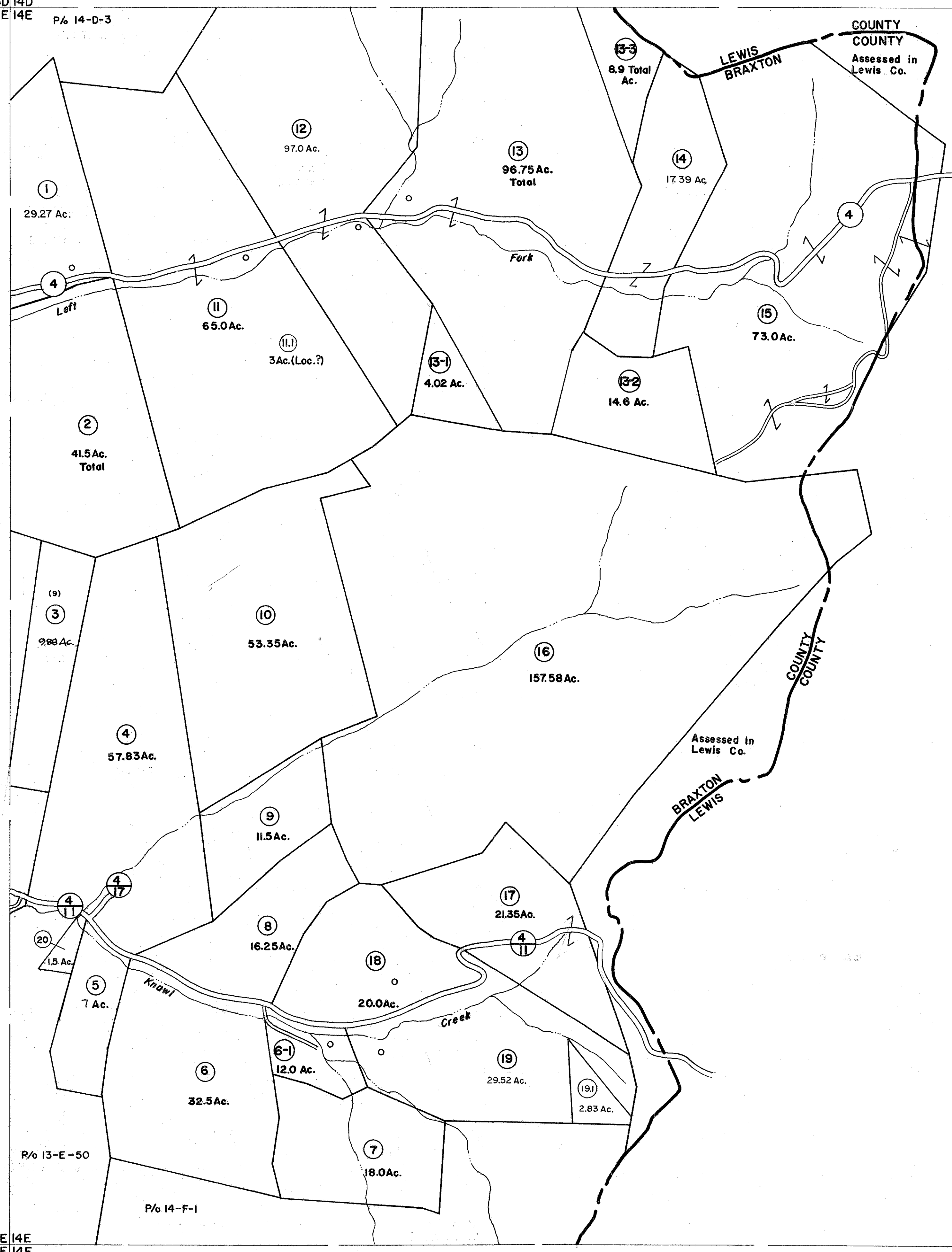


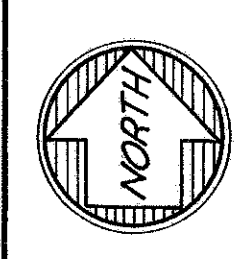
13D 14D  
13E 14E P/o 14-D-3



P/o 13-E-50

P/o 14-F-1

13E 14E  
13F 14F



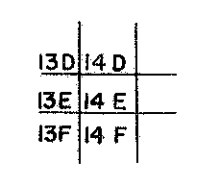
**For Tax Purposes Only**

Prepared by  
**VOGT, IVERS AND ASSOCIATES**  
ENGINEERS-ARCHITECTS  
CHARLESTON, W.VA.  
CINCINNATI, OHIO

Property line	—————	Original lot line	-----
Edge of pavement or roadway	-----	Deed lot number	(15)
Corporation line	-----	Parcel or index number	⊙
District line	-----	Improvement	○
County line	-----	Railroad	—+—

Revisions	
1 PARCELS 6-1,13-1,13-2,13-3	9 OGIS 2/11/91 DSH
2 ADDED 6-28-63	10 5-1-99 J.E.B
3 5-31-77	11 ESI 6/11/02 REK
4 November, 1981	12 4/2/13 S.B.H
5 July 1, 1983	13 2/21/15 S.B.H
6 7-1-84	14 L.E.S
7 July, 1987	15 TRL
	16

KEY MAP



**BRAXTON COUNTY**

STATE OF WEST VIRGINIA  
Office of Assessor

DISTRICT  
**SALT LICK DISTRICT**

**SHEET NO: 14-E**

Date, Aerial Photography: 4-22-60 Date, Map: 4-19-62  
Photo No: BR-14-13.14 Scale: 1" = 400'