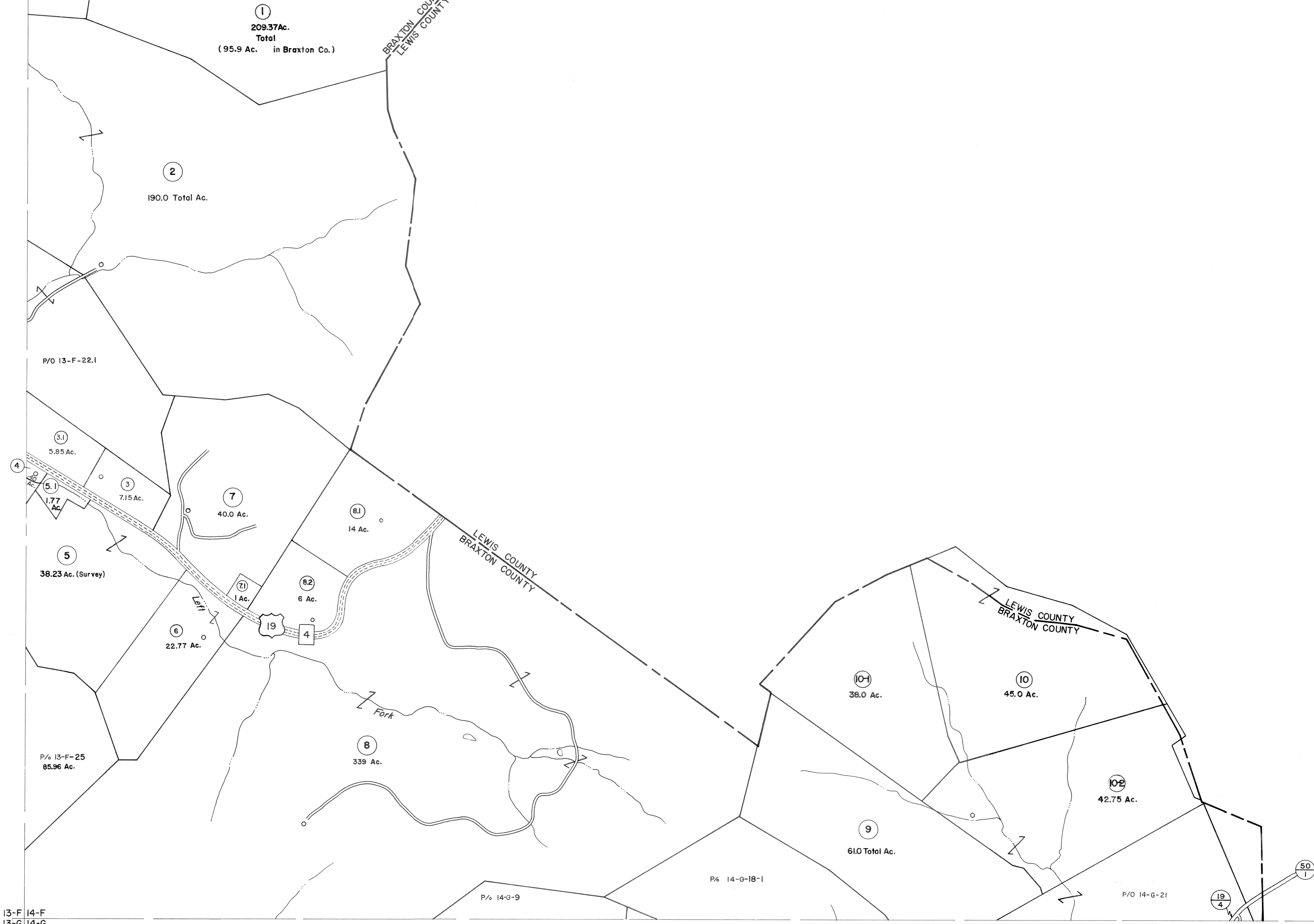


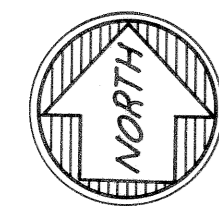
13-E 14-E
13-F 14-F

14-E
14-F



13-F 14-F
13-G 14-G

14-F
14-G 15-G



For Tax Purposes Only

Prepared by
VOGT, IVERS AND ASSOCIATES
 ENGINEERS-ARCHITECTS
 CHARLESTON, W.VA.
 CINCINNATI, OHIO

Property line —————
 Edge of pavement or roadway - - - - -
 Corporation line - - - - -
 District line - - - - -
 County line - - - - -

Original lot line - - - - -
 Deed lot number (15) ————
 Parcel or index number (19) ————
 Improvement (19) ————
 Railroad ————

Revisions			
1	PARCELS 10-1, 10-2 ADDED	9	July, 1987 TRL
2	6-27-63	10	O.G.I.S 6-1-96 J.E.B
3	5-24-77	11	4/12/09 SBH
4	November, 1981	12	TRL
5	July 1, 1983	13	
6	7-1-84	14	L.E.S.
7	Revised to 7-1-84	15	
8	Revised to 7-1-84	16	

KEY MAP

13-E 14-E
 13-F 14-F
 13-G 14-G

BRAXTON COUNTY
 STATE OF WEST VIRGINIA
 Office of Assessor

DISTRICT
SALT LICK DISTRICT

SHEET NO: 14-F

Date, Aerial Photography: 4-20-60
 Photo No:
 Date, Map: 2-21-62
 Scale: 1"=400'