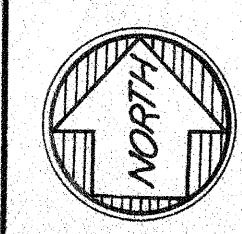
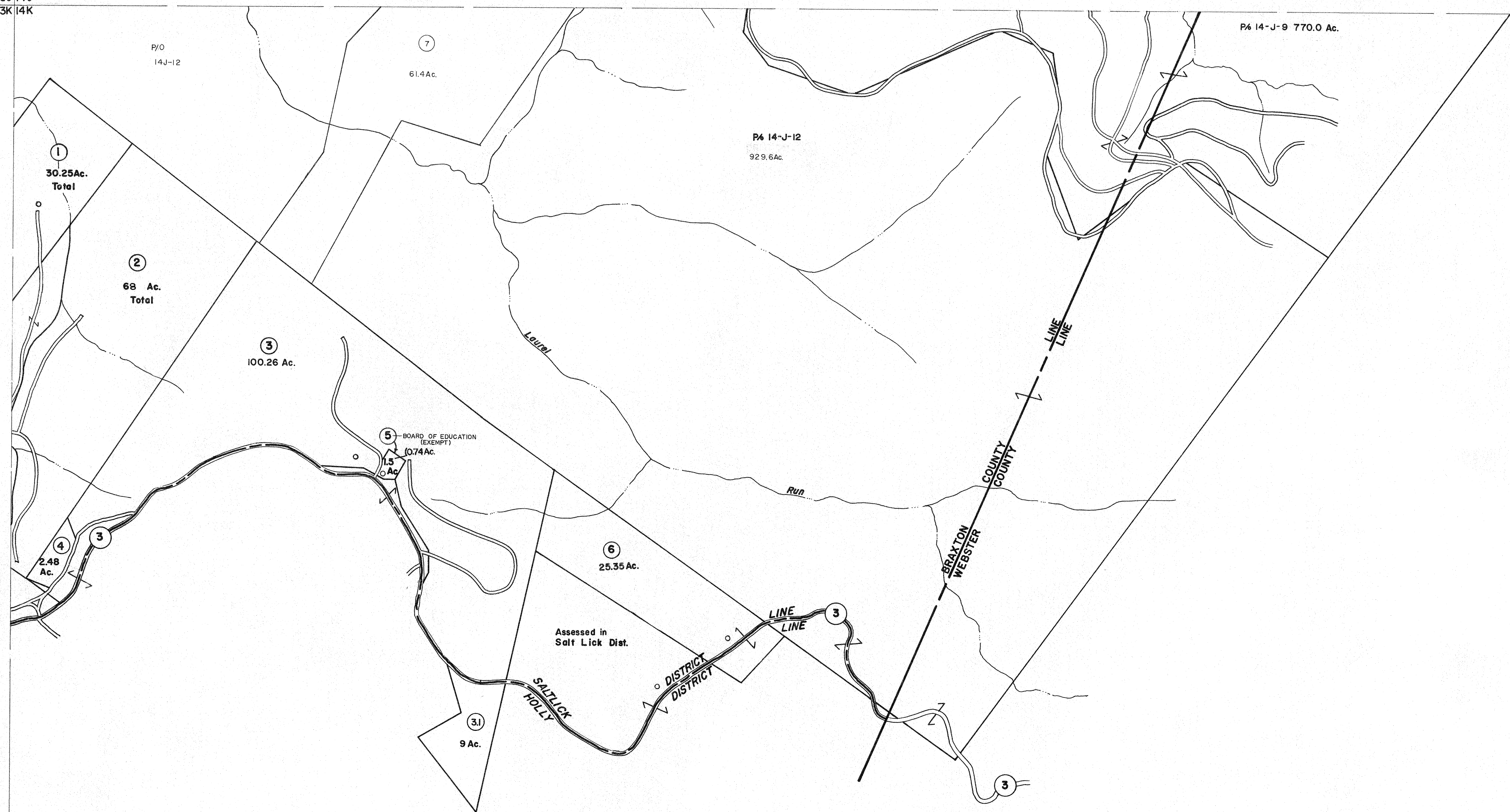


13J 14J
13K 14K

14-J
14-K



For Tax Purposes Only
 Prepared by
VOGT, IVERS AND ASSOCIATES
 ENGINEERS-ARCHITECTS
 CHARLESTON, W.VA.
 CINCINNATI, OHIO

Property line	—————	Original lot line	-----
Edge of pavement or roadway	-----	Deed lot number	(15)
Corporation line	-----	Parcel or index number	Ⓢ
District line	-----	Improvement	○
County line	-----	Railroad	—+—

Revisions			
1	5-21-17	SRJ	9 2/14/17 SLS 17
2	November, 1981	TRL	10 18
3	JULY 1, 1983		11 19
4	7-1-84	L.E.S.	12 20
5	Revised to 11-87		13 21
6	OGIS 2/11/90	DSH	14 22
7	O.G.I.S 6-1-96	J.E.B.	15 23
8			16 24

KEY MAP
 13J 14J
 13K 14K

BRAXTON COUNTY
 STATE OF WEST VIRGINIA
 Office of Assessor

DISTRICT
SALT LICK DISTRICT
 SHEET NO: 14-K
 Date, Aerial Photography: 4-22-60 Date, Map: 4-21-62
 Photo No: RR-14-19 Scale: 1" = 400'