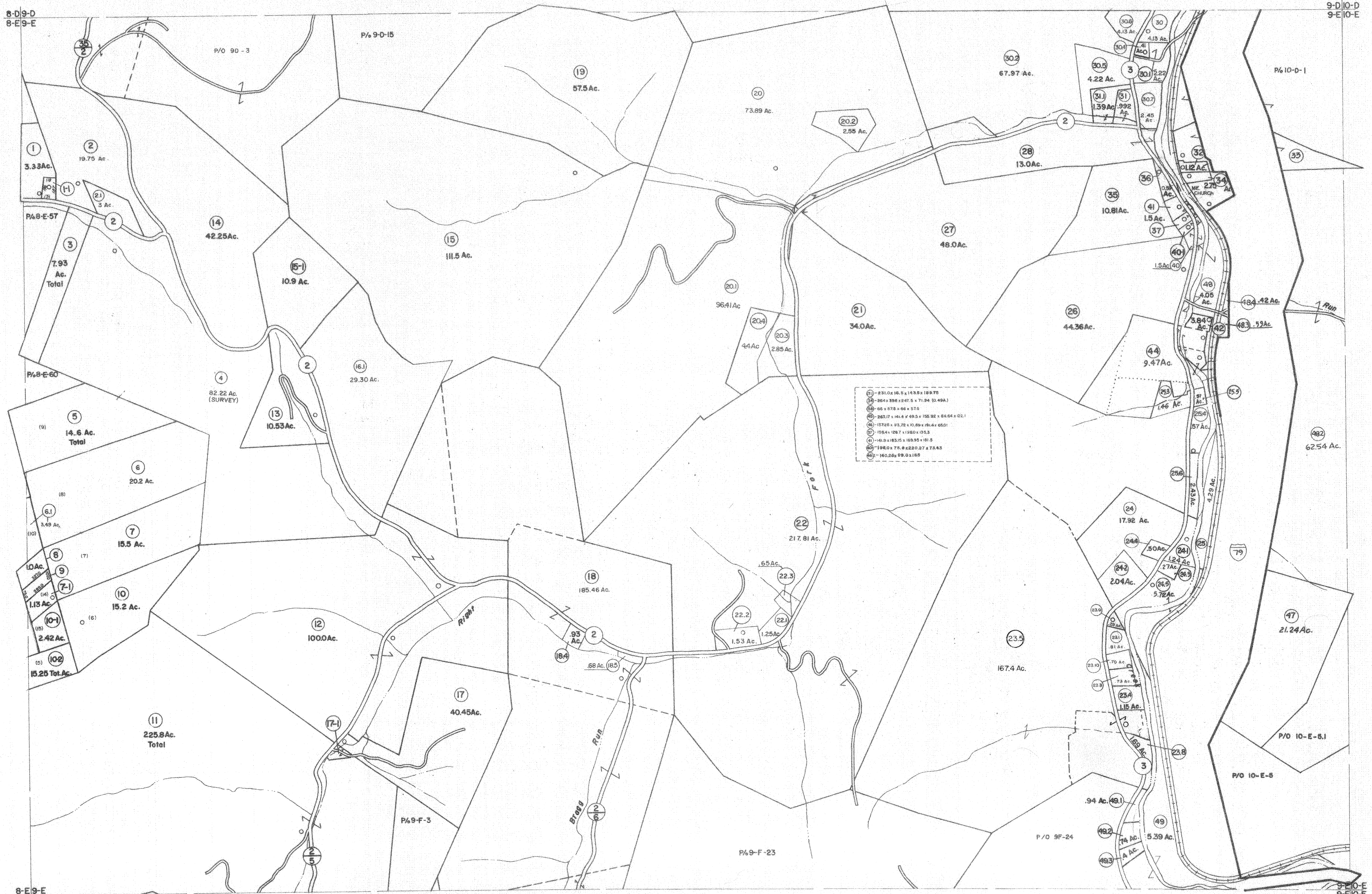


8-D-9-D
8-E-9-E

9-D-10-D
9-E-10-E



17-231.0x16.5x143.5x189.75
 18-264x398x247.5x71.94(0.49A)
 19-66x57.5x66x57.5
 20-263.77x141.4x49.5x150.92x84.64x22.1
 21-172.6x93.78x10.69x19.4x65.01
 22-158.4x128.7x138.0x55.3
 23-141.3x183.5x183.5x181.3
 24-118.0x77.8x225.07x73.43
 25-140.25x99.0x188

8-E-9-E
8-F-9-F

9-E-10-E
9-F-10-F

For Tax Purposes Only

Prepared by
VOGT, IVERS AND ASSOCIATES
 ENGINEERS-ARCHITECTS
 CHARLESTON, W.VA.
 CINCINNATI, OHIO

Property line	—	Original lot line	— (15)
Edge of pavement or roadway	—	Deed lot number	○
Corporation line	—	Parcel or index number	○
District line	—	Improvement	—
County line	—	Railroad	—

Revisions	
1	PARCEL 4-1, 5-1, 7-1, 10-1, 10-2, 7-1-84 L.E.S.
2	18-1, 17-1, 18-1, 18-2, 18-3, 40-1, Revised to 7-1-85
3	42-1, 42-2, 44-1, 44-2 ALL Revised to 7-1-85
4	ADDED 6-24-83 TRL
5	2-26-73 Jack Reaves Revised to 1-1-88
6	5-23-77 SRJ
7	NOVEMBER, 1981 TRL
8	EXCALIBUR GRAPHICS 5/93
9	7-1-84 L.E.S.
10	Revised to 7-1-85
11	Revised to 7-1-85
12	July, 1987 TRL
13	Revised to 1-1-88
14	OGIS 2/11/91 DSH
15	OGIS 5/93
17	OGIS 5/6/95 SAJ
18	O.G.I.S 6-1-96 J.E.B
19	5-1-97 J.E.B
20	4-15-98 J.E.B
21	5-1-99 J.E.B
22	ESI 4-27-00 REK
23	ESI 6/6/02 REK

5/10/05	SBH
3-18-10	4145
KEY MAP	SBH
4/1/13	SBH
2/19/15	4447
2-21-16	
8-D-9-D	SBH
8-E-9-E	SBH
8-F-9-F	SBH
8-F-10-F	SBH
2/10/17	SLS

BRAXTON COUNTY
 STATE OF WEST VIRGINIA
 Office of Assessor

DISTRICT	SALT LICK DISTRICT
SHEET NO.	9-E
Date, Aerial Photography:	4-22-60
Date, Map:	4-19-62