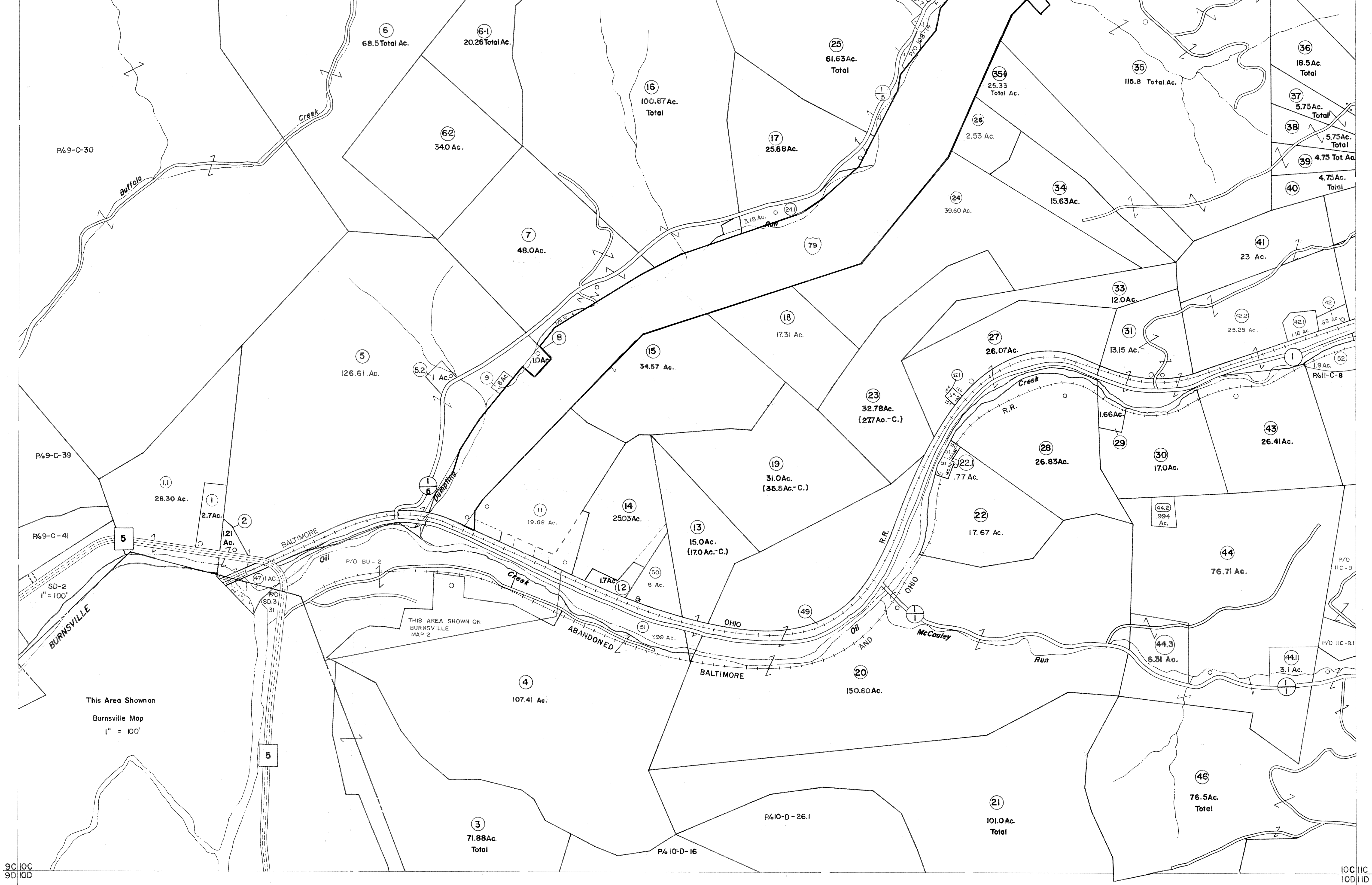


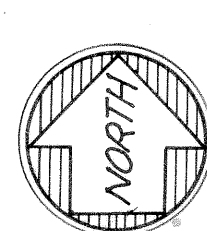
9B IOB
9C IOC

IOB IIB
IOC IIC



9C IOC
9D IOB

IOC IIC
IOB IID



For Tax Purposes Only

Prepared by
VOGT, IVERS AND ASSOCIATES
 ENGINEERS-ARCHITECTS
 CHARLESTON, W.VA.
 CINCINNATI, OHIO

Property line ————
 Edge of pavement or roadway - - - -
 Corporation line - - - - -
 District line - - - - -
 County line - - - - -

Original lot line - - - - -
 Deed lot number (15)
 Parcel or index number (9)
 Improvement ————
 Railroad ————

Revisions	
1	PARCELS 5-1, 6-1, 6-2, ADDED
2	6-26-63
3	PARCEL 45, DELETED 6-26-63
4	4-26-77
5	NOVEMBER, 1981
6	July 1, 1981
7	7-1-84
8	Revised to 7-1-85
9	Revised to 7-1-86
10	July, 1987
11	Revised to 1-1-88
12	OGIS 2/11/91
13	EXCALIBUR GRAPHICS 5/93
14	O.G.I.S 6-1-96
15	L.E.S. 5-1-97
16	ESI 4-27-00 REK
17	ESI 5/24/01 REK
18	ESI 6/6/02 REK
19	5/6/04 S&H
20	
21	
22	
23	
24	

KEY MAP

9B IOB IIB
 9C IOC IIC
 9D IOB IOB
 9D IOC IID

BRAXTON COUNTY

STATE OF WEST VIRGINIA

Office of Assessor

DISTRICT
SALT LICK DISTRICT

SHEET NO: IO-C

Date, Aerial Photography: 4-20-60
 Photo No: BR-14-105

Date, Map: 4-18-62
 Scale: 1" = 400'