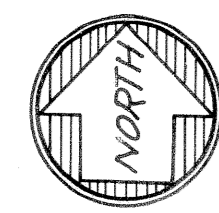
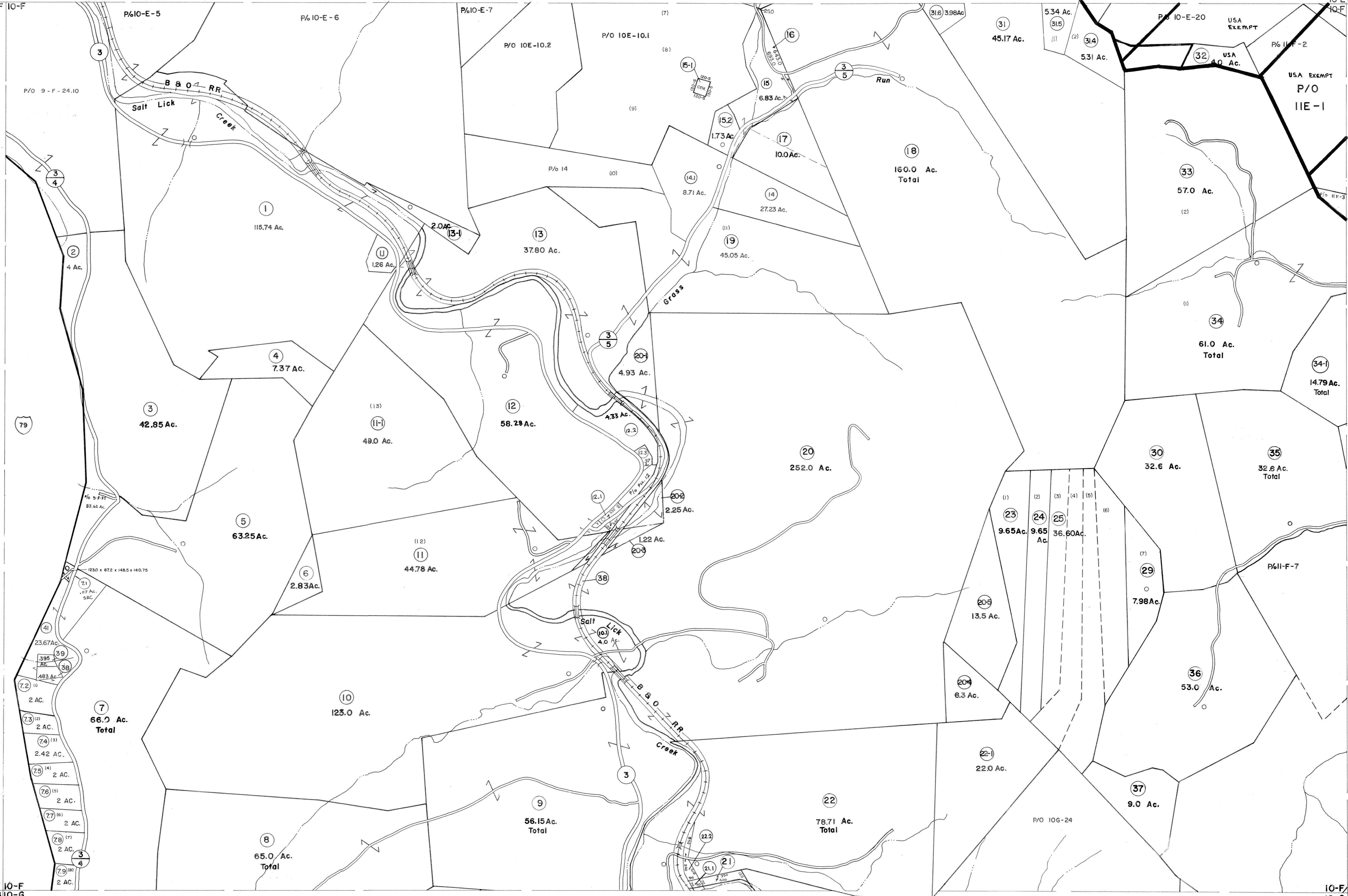


9-E 10-E
9-F 10-F

9-F 10-F
9-G 10-G

10-E 11-E
10-F 11-F

10-F 11-F
10-G 11-G



For Tax Purposes Only

Prepared by
VOGT, IVERS AND ASSOCIATES
 ENGINEERS-ARCHITECTS
 CHARLESTON, W.VA.
 CINCINNATI, OHIO

Property line —————
 Edge of pavement or roadway - - - - -
 Corporation line - - - - -
 District line - - - - -
 County line - - - - -

Original lot line - - - - -
 Deed lot number (15) ————
 Parcel or index number (15) ————
 Improvement (15) ————
 Railroad ————

Revisions			
1	PARCELS 7-1, 11-1, 13-1, 15-1, 20-1	9	Revised 7-1-85
2	20-2, 20-3, 20-4, 20-5, 22-1, 34-1	10	July, 1987
3	37-1 ADDED 6-25-63	11	TRL
4	PARCEL 15-1 ADDED 10-3-63	12	Revised to 1-1-88
5	8-31-77 VM	13	EXCALIBUR GRAPHICS 5/93
6	NOVEMBER, 1981	14	D.G.I.S 6-1-96
7	Revised to 7-1-83	15	ESI 4-27-00 REK
8	7-1-84	16	5/5/04
		17	5/10/05

KEY MAP

9-E 10-E 11-E
 9-F 10-F 11-F
 9-G 10-G 11-G

BRAXTON COUNTY

STATE OF WEST VIRGINIA

Office of Assessor

DISTRICT

SALT LICK DISTRICT

SHEET NO: 10-F

Date, Aerial Photography: 4-20-60 Date, Map: 4-5-62
 Photo No: BR-14-102 Scale: 1" = 400'