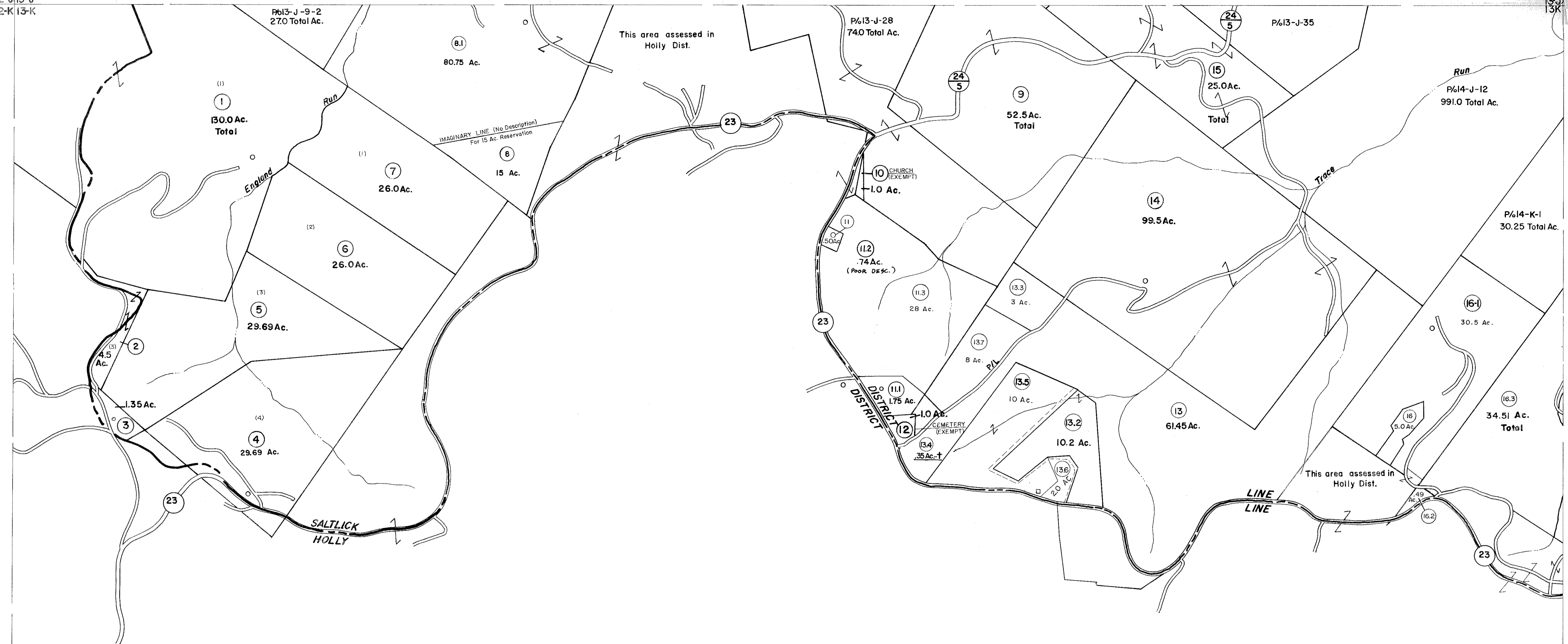
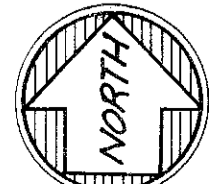


12-J 13-J
12-K 13-K

13-J
13-K



For Tax Purposes Only



Prepared by
VOGT, IVERS AND ASSOCIATES
ENGINEERS-ARCHITECTS
CHARLESTON, W.VA.
CINCINNATI, OHIO

Property line	—————	Original lot line	-----
Edge of pavement or roadway	-----	Deed lot number	(15)
Corporation line	-----	Parcel or index number	(16)
District line	-----	Improvement	○
County line	-----	Railroad	—+—+—+—

Revisions		Revisions	
1	PARCEL 16-1 ADDED 6-26-63	9	OGIS 2/11/91 DSH
2	5-31-77	10	O.G.I.S 6-1-98 J.E.B
3	November, 1981 TRL	11	5-1-97 J.E.B
4	July 1, 1983	12	
5	7-1-84 L.E.S.	13	
6	July, 1987 TRL	14	
7	Revised to 1-1-88	15	
8		16	

KEY MAP

12-J 13-J 14-J
12-K 13-K 14-K

BRAXTON COUNTY
STATE OF WEST VIRGINIA
Office of Assessor

DISTRICT
SALT LICK DISTRICT

SHEET NO: 13-K

Date, Aerial Photography: 4-22-60
Photo No: BR-14-45

Date, Map: 4-21-62
Scale: 1" = 400'