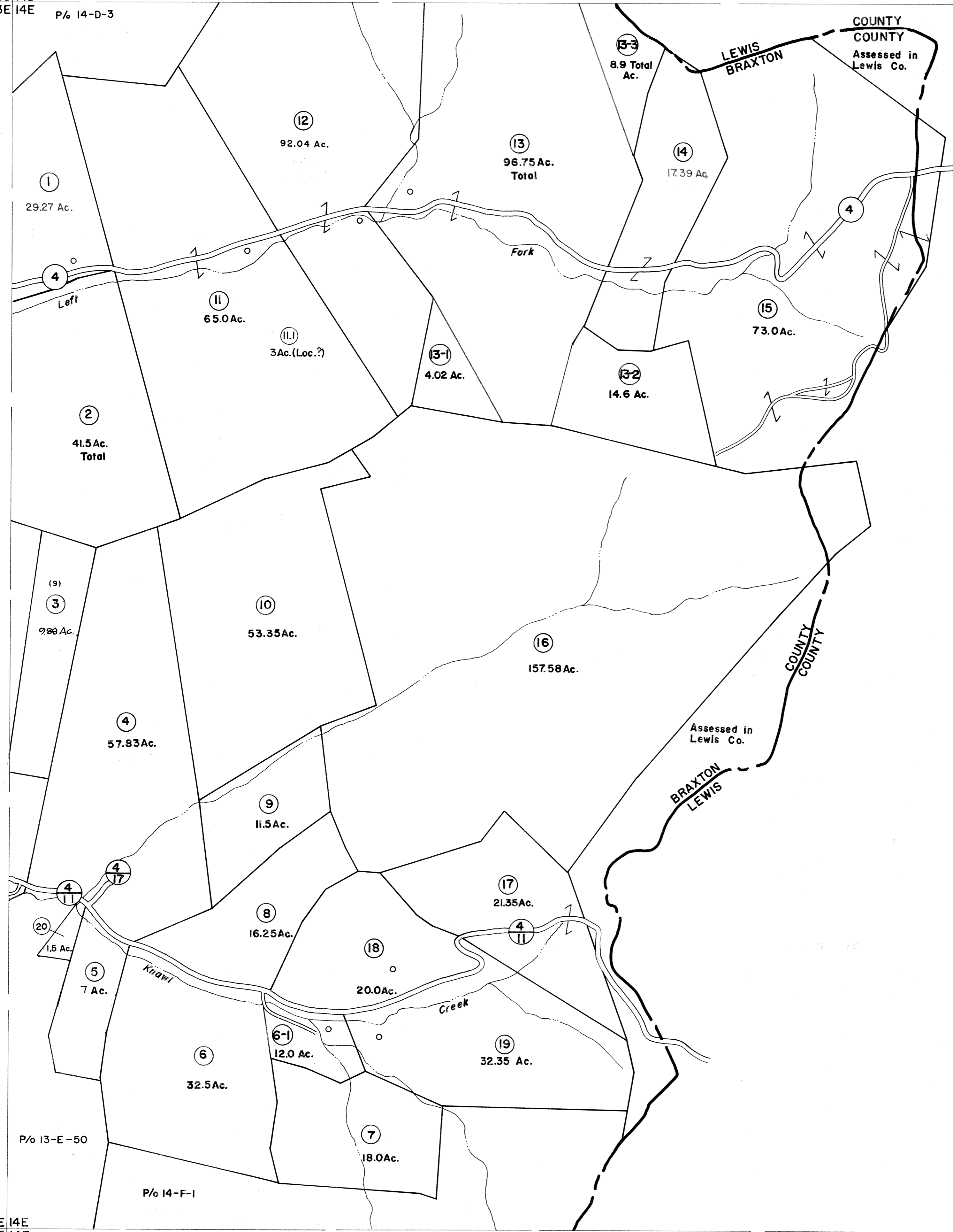
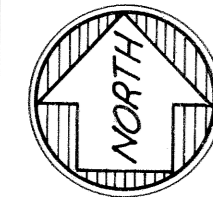


13D 14D  
13E 14E P/6 14-D-3



13E 14E  
13F 14F

For Tax Purposes Only



Prepared by  
**VOGT, IVERS AND ASSOCIATES**  
ENGINEERS-ARCHITECTS  
CHARLESTON, W.VA.  
CINCINNATI, OHIO

Property line  
Edge of pavement or roadway  
Corporation line  
District line  
County line

Original lot line  
Dead lot number  
Parcel or index number  
Improvement  
Railroad

Revisions	
1 PARCELS 6-1, 13-1, 13-2, 13-3	9 OGIS 2/11/91 DSH 17
2 ADDED 6-28-63	10 5-1-99 J.E.B. 18
3 5-31-77	11 ESI 6/11/02 REK 19
4 November, 1981	12 TRL 20
5 July 1, 1983	13 21
6 7-1-84	14 L.E.S. 22
7 July, 1987	15 TRL 23
8	16 24

KEY MAP

13D 14D  
13E 14E  
13F 14F

**BRAXTON COUNTY**

STATE OF WEST VIRGINIA

Office of Assessor

DISTRICT

SALT LICK DISTRICT

SHEET NO: 14-E

Date, Aerial Photography: 4-22-60 Date, Map: 4-19-62  
Photo No: BR-14-13,14 Scale: 1" = 400'