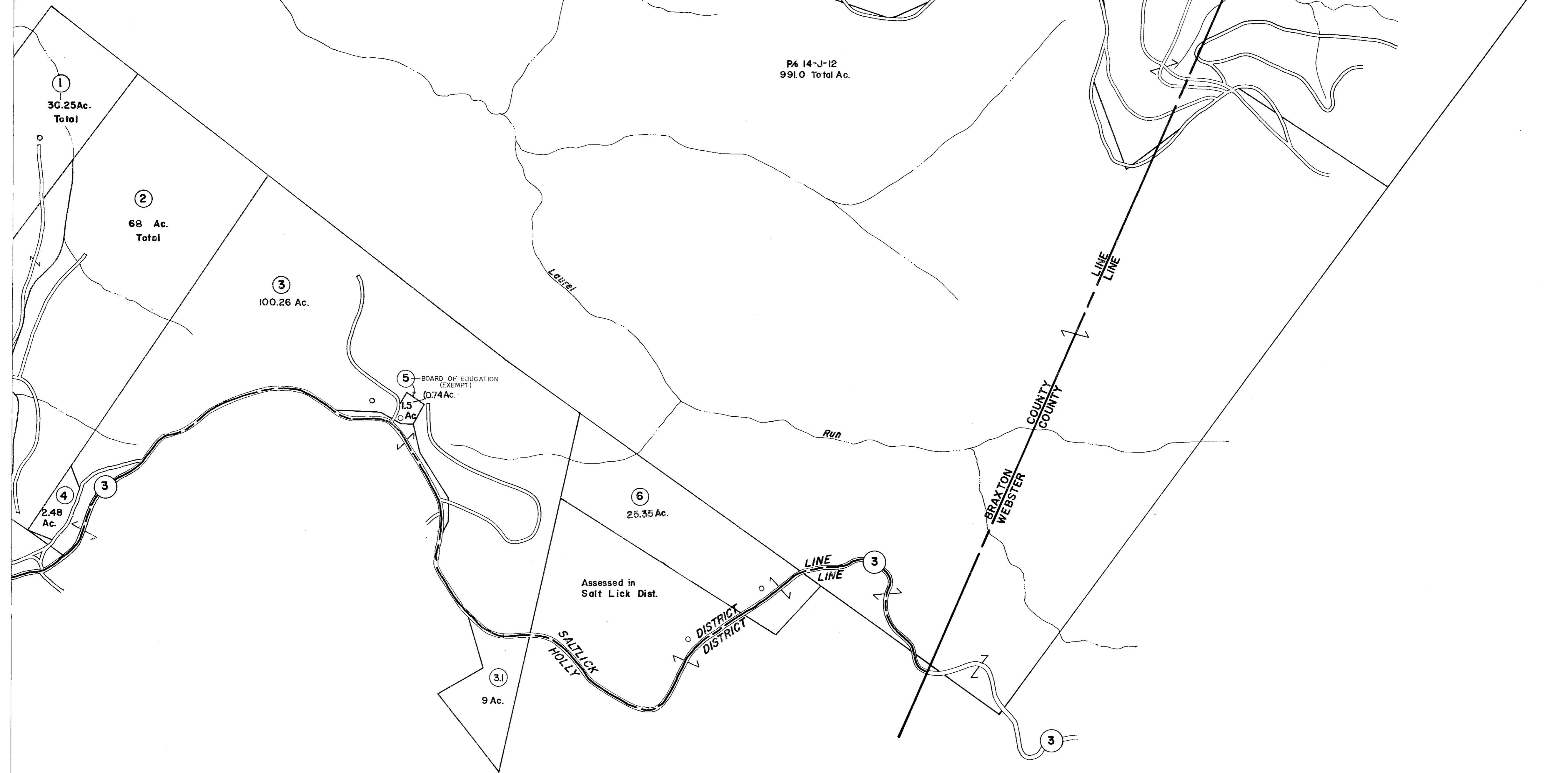


P4 14-J-9 770.0 Ac.

P4 14-J-12
991.0 Total Ac.



①
30.25 Ac.
Total

②
68 Ac.
Total

③
100.26 Ac.

④
2.48 Ac.

⑤
BOARD OF EDUCATION
(EXEMPT)
0.74 Ac.
1.5 Ac.

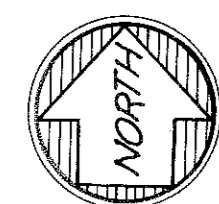
⑥
25.35 Ac.

③
9 Ac.

Assessed in
Salt Lick Dist.

③
LINE
LINE

BRAXTON
WEBSTER
COUNTY
COUNTY



For Tax Purposes Only

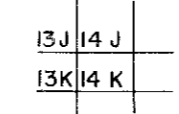
Prepared by
VOGT, IVERS AND ASSOCIATES
ENGINEERS-ARCHITECTS
CHARLESTON, W.VA.
CINCINNATI, OHIO

Property line ————
 Edge of pavement or roadway - - - -
 Corporation line ————
 District line - - - - -
 County line ————

Original lot line - - - - -
 Deed lot number (15) ○
 Parcel or index number (99) ○
 Improvement ○
 Railroad ————

Revisions	
1	5-21-17 SRJ 9
2	November, 1981 TRJ 10
3	JULY 1, 1983 11
4	7-1-84 L.E.S. 12
5	Revised to A.B.T. 13
6	OGIS 2/11/90 DSH 14
7	O.G.I.S 6-1-96 J.E.B. 15
8	

KEY MAP



BRAXTON COUNTY

STATE OF WEST VIRGINIA

Office of Assessor

DISTRICT

SALT LICK DISTRICT

SHEET NO: 14-K

Date, Aerial Photography: 4-22-60
Photo No: BR-14-19

Date, Map: 4-21-62
Scale: 1" = 400'