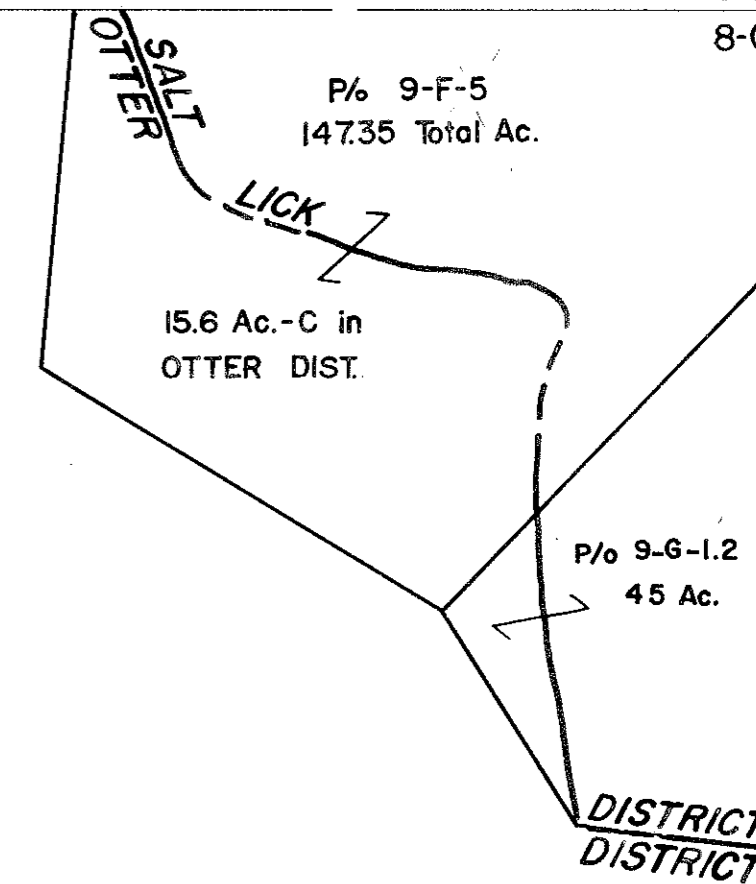


8-F 9-F  
8-G 9-G



For Tax Purposes Only

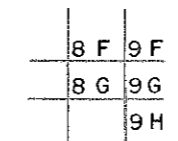
Prepared by  
**VOGT, IVERS AND ASSOCIATES**  
ENGINEERS-ARCHITECTS  
CHARLESTON, W.VA.  
CINCINNATI, OHIO

Property line \_\_\_\_\_  
Edge of pavement or roadway - - - -  
Corporation line - - - - -  
District line - - - - -  
County line - - - - -

Original lot line - - - - -  
Deed lot number (15)  
Parcel or index number 99  
Improvement o  
Railroad —+—+—

|   |                    | Revisions |    |
|---|--------------------|-----------|----|
| 1 | NOVEMBER, 1981 TRL | 9         | 17 |
| 2 | JULY 1, 1983       | 10        | 18 |
| 3 | 7-1-84 L.E.S.      | 11        | 19 |
| 4 |                    | 12        | 20 |
| 5 |                    | 13        | 21 |
| 6 |                    | 14        | 22 |
| 7 |                    | 15        | 23 |
| 8 |                    | 16        | 24 |

KEY MAP



# BRAXTON COUNTY

STATE OF WEST VIRGINIA

Office of Assessor

DISTRICT  
SALT LICK DISTRICT

SHEET NO: 8-G

Date, Aerial Photography: 4-22-60  
Photo No: BR-14-142

Date, Map: 7-6-62  
Scale: 1" = 400'