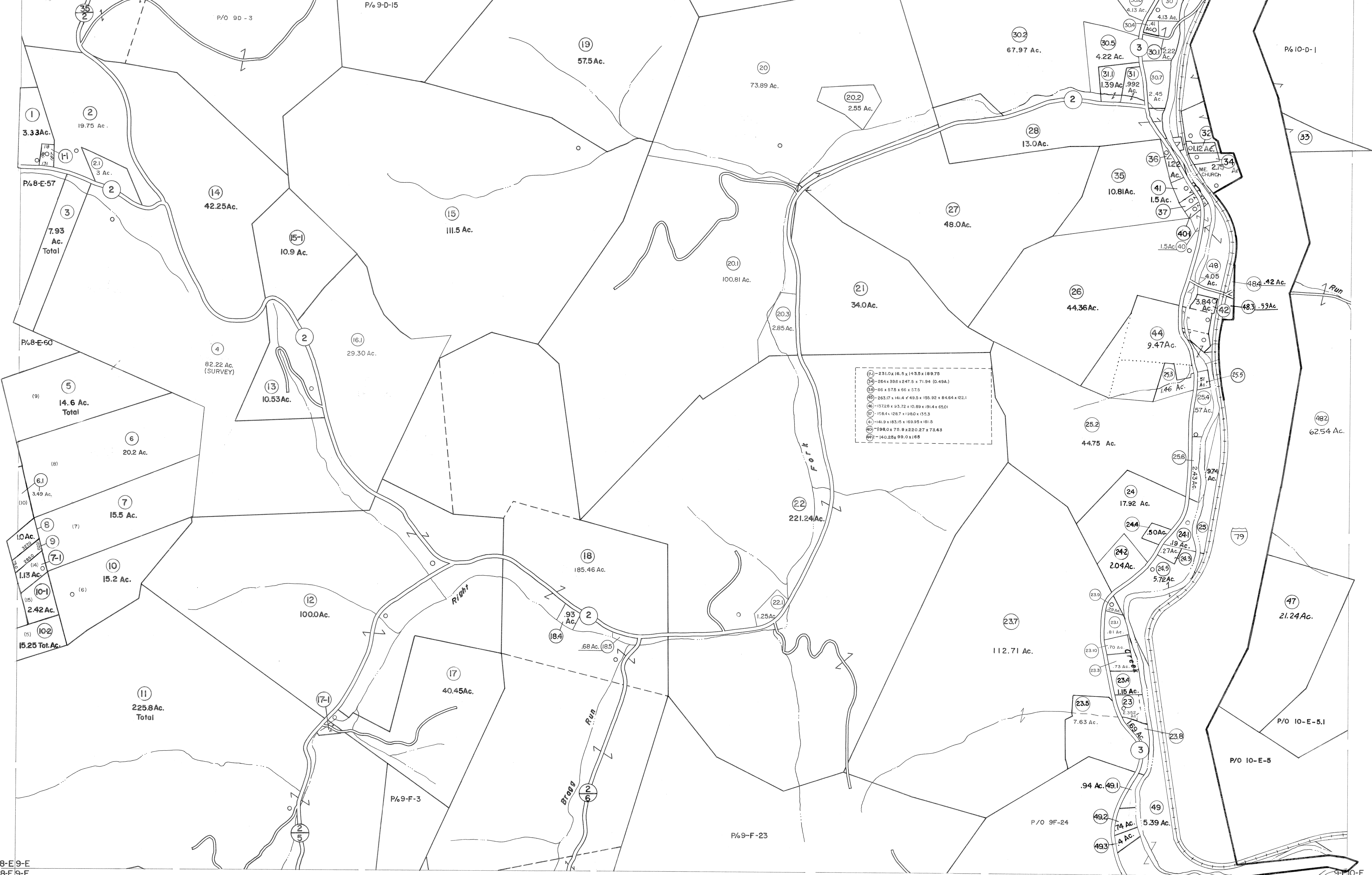


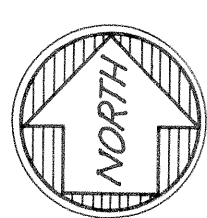
8-D-9-D
8-E-9-E

9-D-10-D
9-E-10-E



8-E-9-E
8-F-9-F

9-E-10-E
9-F-10-F



For Tax Purposes Only

Prepared by
VOGT, IVERS AND ASSOCIATES
 ENGINEERS-ARCHITECTS
 CHARLESTON, W.VA.
 CINCINNATI, OHIO

Property line	—————
Edge of pavement or roadway	—————
Corporation line	—————
District line	—————
County line	—————

Original lot line	—————
Deed lot number	(15)
Parcel or index number	(15)
Improvement	○
Railroad	—+—+—+—

Revisions	
1	PARCEL 4-1, 6-1, 7-1, 10-1, 10-2, 9 7-1-84 L.E.S. 17
2	15-1, 17-1, 18-1, 18-2, 18-3, 40-1, 10 Revised to 7-1-84 18
3	42-1, 42-2, 44-1, 44-2 ALL 11 Revised to 7-1-85 19
4	ADDED 6-24-63 12 July, 1987 TRL 20
5	2-26-73 Jack Reeves 13 Revised to 7-1-85 21
6	5-23-77 14 OGIS 2/11/91 DSH 22
7	NOVEMBER, 1981 TRL 15 EXCALIBUR GRAPHICS 5/93 23
8	July 4, 1983 CBG 16 5/6/04 S&H 24

5/10/05	S&H
KEY MAP	
8-D-9-D	10-D
8-E-9-E	10-E
8-F-9-F	10-F

BRAXTON COUNTY

STATE OF WEST VIRGINIA

Office of Assessor

DISTRICT
SALT LICK DISTRICT

SHEET NO: 9-E

Date, Aerial Photography: 4-22-60
 Photo No: BR-14-114

Date, Map: 4-19-62
 Scale: 1" = 400'