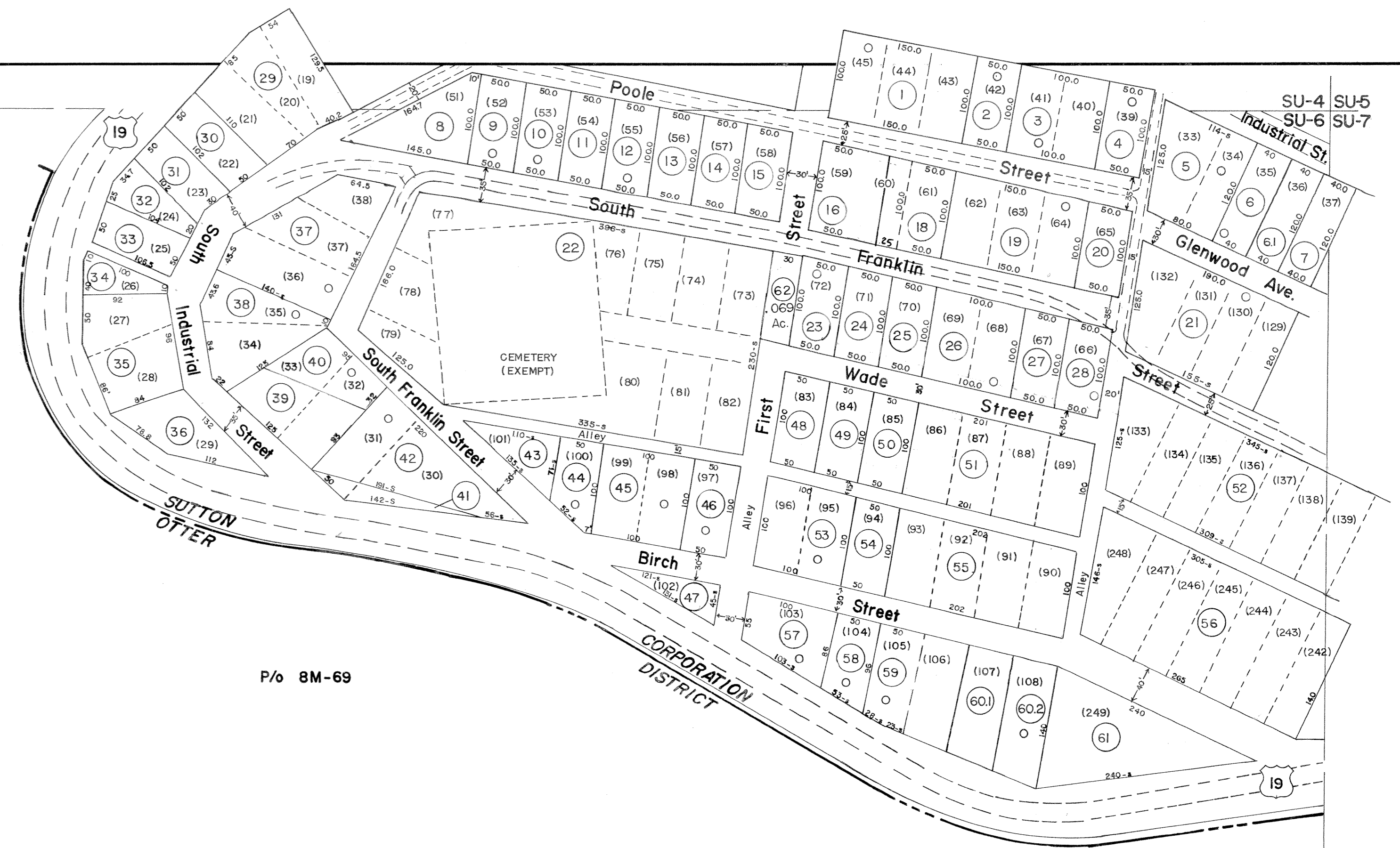


SU-4
SU-6

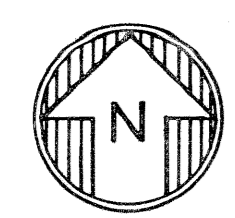
SU-4 SU-5
SU-6 SU-7



P/o 8M-69

P/o 8M-71

SU-6 SU-7



For Tax Purposes Only

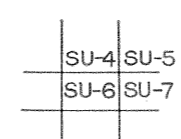
Prepared by
VOGT, IVERS AND ASSOCIATES
ENGINEERS-ARCHITECTS
CHARLESTON, W. VA.
CINCINNATI, OHIO

Property line —————
Edge of pavement or roadway - - - - -
Corporation line - - - - -
District line - - - - -
County line - - - - -

Original lot line - - - - -
Deed lot number (15) ————
Parcel or index number (19) ————
Improvement (o) ————
Railroad ————

Revisions			
1	Revised to 7-1-80	9	ESI 6/6/02 REK 17
2	REV. 7-80 DR. 8-82 T. Groves	10	4/15/07 SBH 18
3	7-1-83	11	
4	7-1-84 L.E.S.	12	
5	Revised to 7-1-86	13	
6	EXCALIBUR GRAPHICS 5/93	14	
7	OGIS 5/1/95 SAJ	15	
8	5-1-97 J.E.B.	16	

KEY MAP



BRAXTON COUNTY

STATE OF WEST VIRGINIA

Office of Assessor

DISTRICT
TOWN OF SUTTON

SHEET NO: **SU-6**

Date, Aerial Photography: 4-14-60 Date, Map: 2-28-63
Photo No: BRS-12-38 Scale: 1"=100'