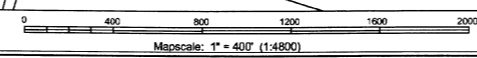
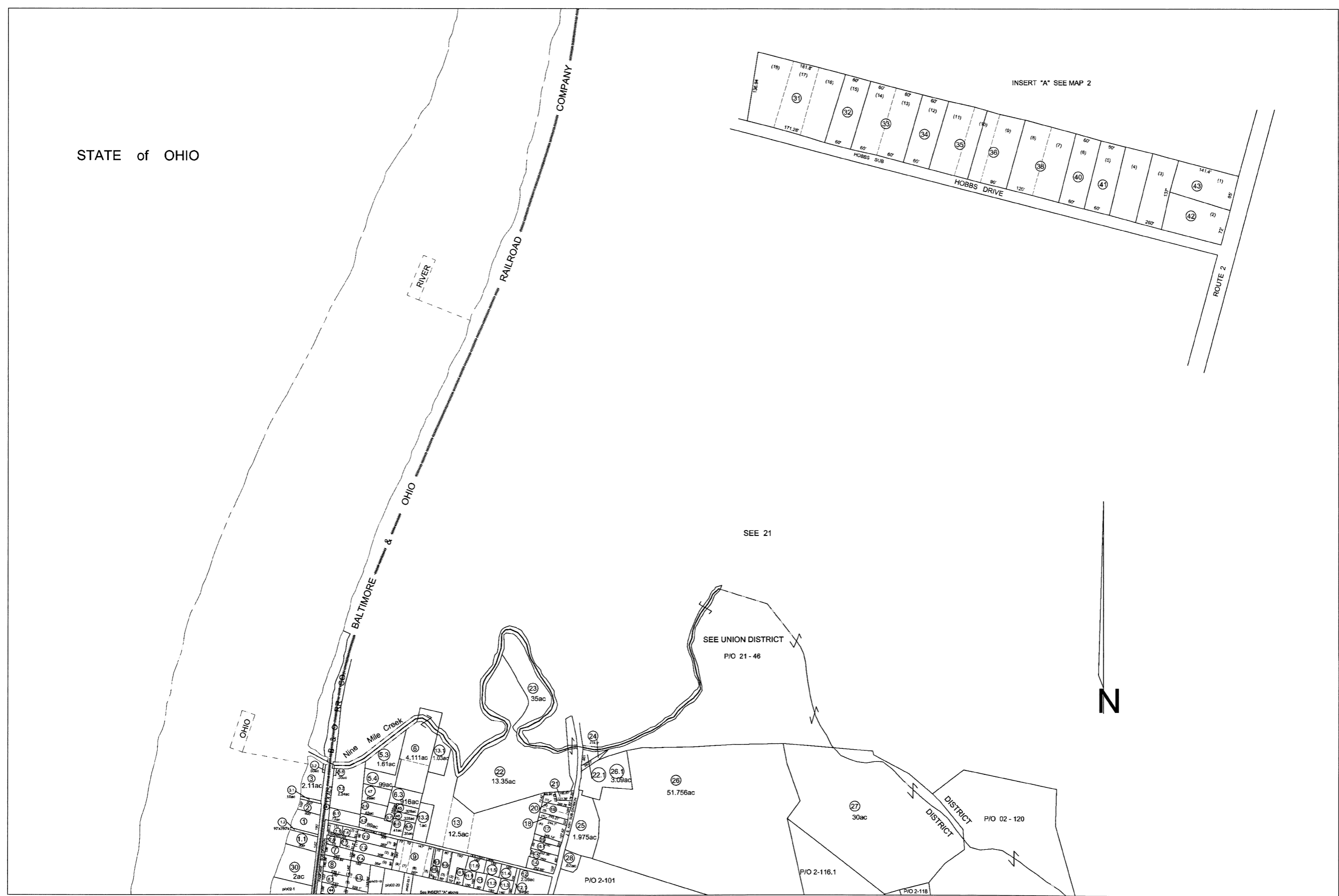
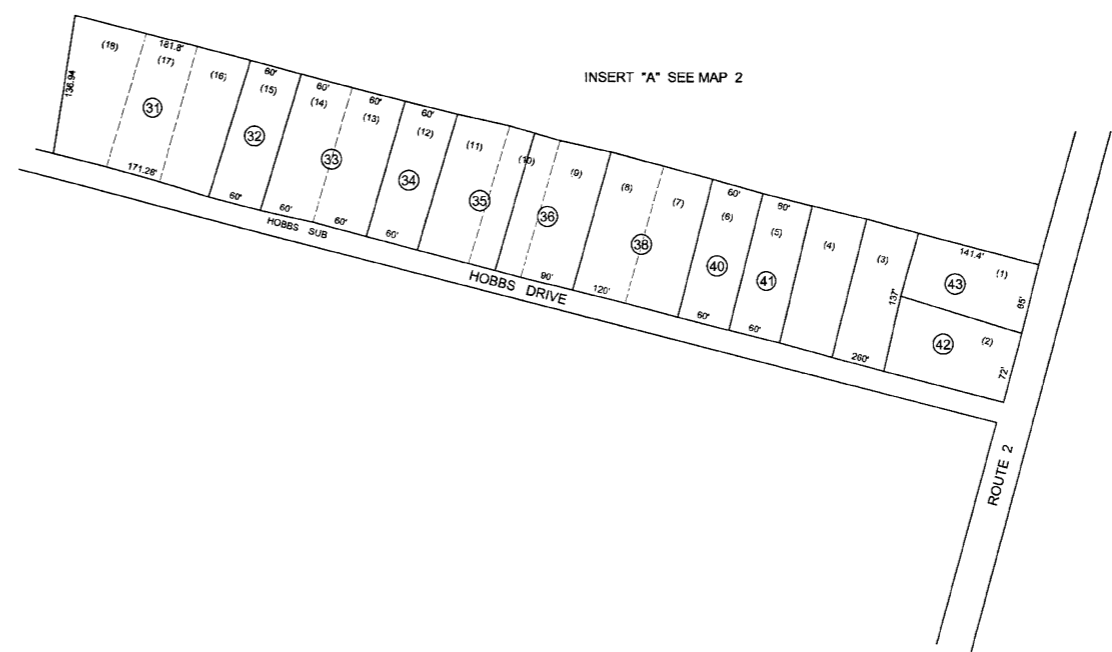


STATE of OHIO



last revision: 08/13/09

**THIS DOCUMENT IS A TAX MAP:** It was compiled for purposes of taxation from available record evidence and has not been field verified. It is not a valid survey plat. The existence of data on this map does not imply any "official" status to such data. The Cabell County Assessor's Office assumes no liability that might result from the inappropriate use of this document. JB/Mapper

Restrictions: All tax maps created under the provisions of reappraisal legislation are the property of the Assessor of Cabell County, West Virginia and the reproduction, copying, modification or sale of such tax maps or any copies thereof without the written permission of the Cabell County Assessor is prohibited by law.

Office of the  
Cabell County Assessor  
Ottie Adkins, Assessor

- Legend:
- Roadway Right of Way
  - Private Roads
  - Active Lot Lines
  - Former Lot Lines
  - Parcel ID's
  - Political Lines
  - Water/Creeks/Streams
  - Railroad
  - C/S Block Numbers
  - Lot Numbers

OHIO	10-16	10-17
OHIO	01	10-22
OHIO	01-02	01-03

Barboursville District (01)