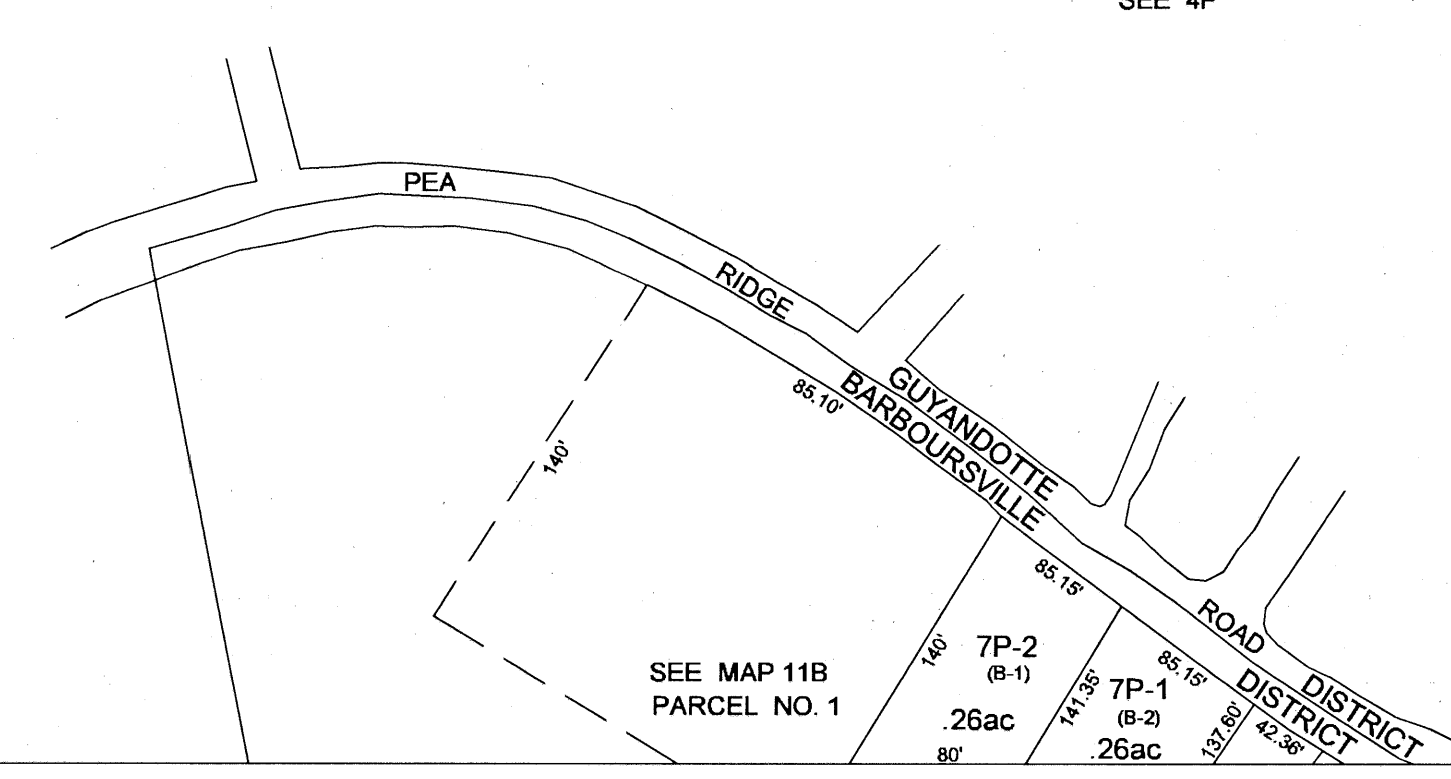
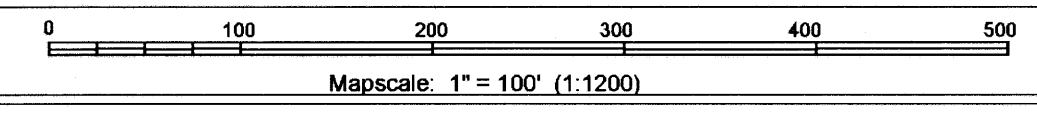


N



SEE 4P



last revision: 04/24/03

THIS DOCUMENT IS A TAX MAP: It was compiled for purposes of taxation from available record evidence and has not been field verified. It is not a valid survey plat. The existence of data on this map does not imply any "official" status to such data. The Cabell County Assessor's Office assumes no liability that might result from the inappropriate use of this document. RJ/Mapper

Office of the
Cabell County Assessor
 Ottie Adkins, Assessor

01-07	01-7K	01-07L
01-07	07P	01-07Q
01-11	01-11B	01-11C

BARBOURSVILLE DISTRICT
MAP 7P