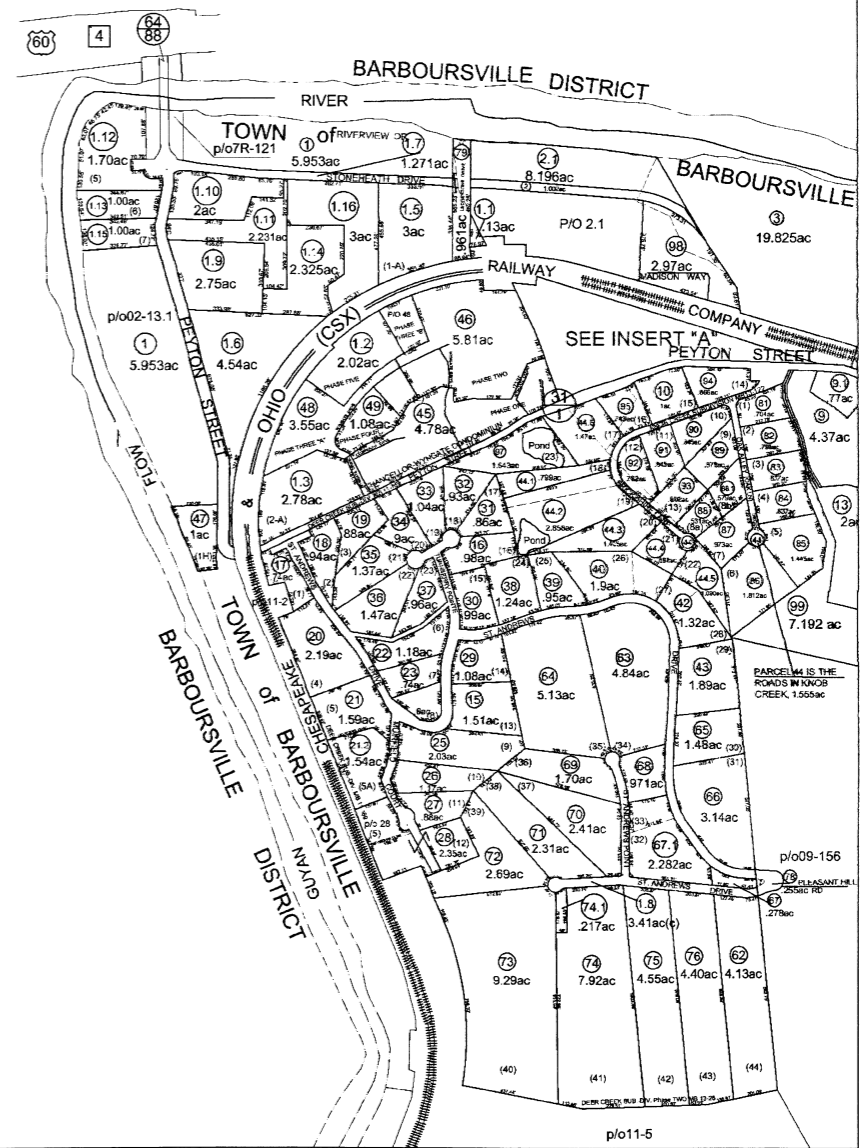
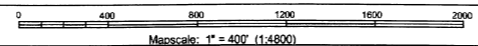




INSERT "A"
SCALE 1"=200'



last revision: 11/19/09



THIS DOCUMENT IS A TAX MAP: It was compiled for purposes of taxation from available record evidence and has not been field verified. It is not a valid survey plat. The existence of data on this map does not imply any "official" status to such data. The Cabell County Assessor's Office assumes no liability that might result from the inappropriate use of this document. JB/Mapper

Restrictions: All tax maps created under the provisions of reappraisal legislation are the property of the Assessor of Cabell County, West Virginia and the reproduction, copying, modification, distribution or sale of such tax maps or any copies thereof without the written permission of the Cabell County Assessor is prohibited by law.

Office of the
Cabell County Assessor
Ottie Adkins, Assessor

Legend:

Roadway Right of Way	-----
Private Roads	-----
Active Lot Lines	-----
Former Lot Lines	-----
Parcel City	-----
Political Lines	-----
River/Creek/Stream	-----
Railroad	-----
City Block Numbers	-----
Lot Numbers	-----

01-07	01-08	02-07	
01-11	13	02-09	City of Barbourville (02)
01-11	02-11	02-11	