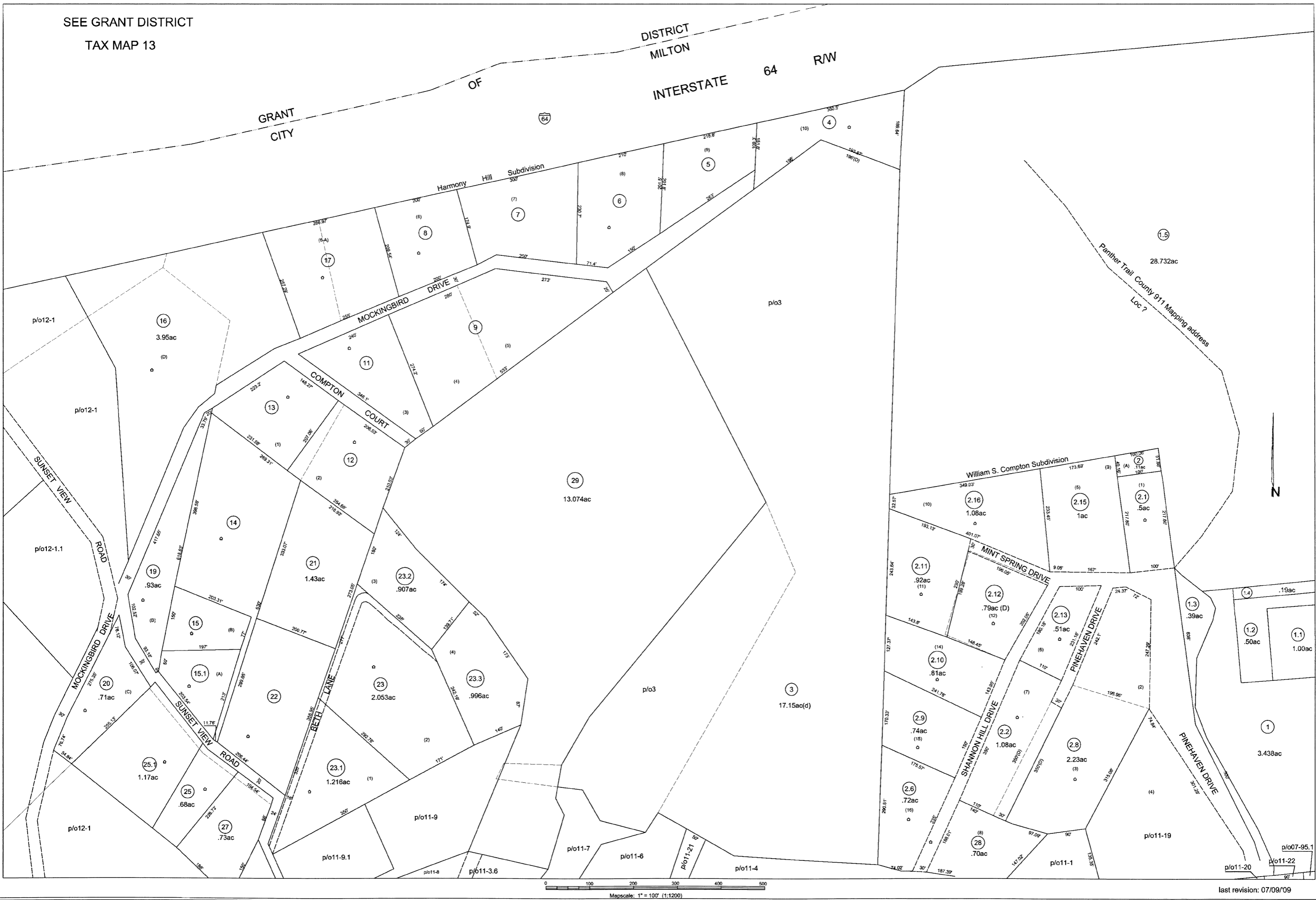


SEE GRANT DISTRICT
TAX MAP 13



last revision: 07/09/09

THIS DOCUMENT IS A TAX MAP: It was compiled for purposes of taxation from available record evidence and has not been field verified. It is not a valid survey plat. The existence of data on this map does not imply any "official" status to such data. The Cabell County Assessor's Office assumes no liability that might result from the inappropriate use of this document. JB/Mapper

Restrictions: All tax maps created under the provisions of reappraisal legislation are the property of the Assessor of Cabell County, West Virginia and the reproduction, copying, modification, distribution or sale of such tax maps or any copies thereof without the written permission of the Cabell County Assessor is prohibited by law.

Office of the
Cabell County Assessor
Ottie Adkins, Assessor

Legend:
 Roadway Right of Way
 Private Roads
 Active Lot Lines
 Former Lot Lines
 Parcel ID's
 Political Lines
 River/Creek/Stream
 Railroad
 City Block Numbers
 Lot Numbers

03-13	03-13	09-01
09-12	10	09-04
03-19	09-11	09-07

City of Milton (09)