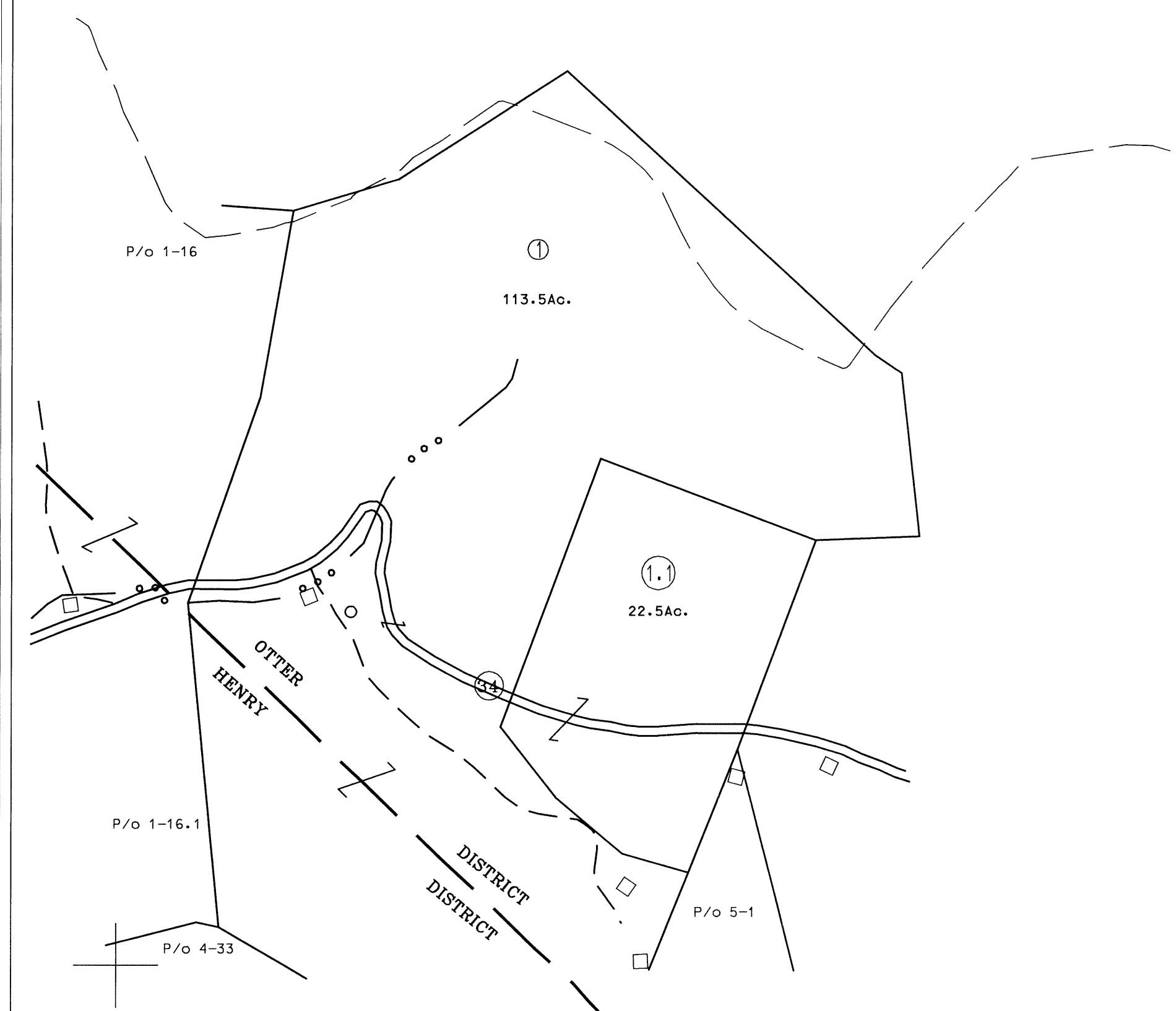


1



5

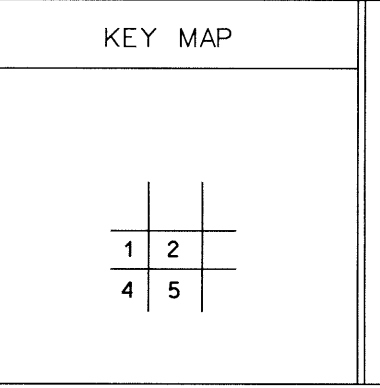
For Tax Purposes Only
 Prepared by
 McKenzie Engineering Corporation
 806 Broad Street
 Summersville, WV 26651

LEGEND	
Property line	Original lot line
Edge of pavement or roadway	Deed lot number (15)
Corporation line	Parcel or index number
District line	Improvement
County line	Railroad

REVISIONS	
1	
2	
3	
4	
5	
6	
7	
8	

RESTRICTION

All tax maps created under the provisions of reappraisal legislation are the property of Clay County West Virginia and the reproduction, copying, distribution or sale of such tax maps or any copies thereof without the written permission of the Clay County Assessor is prohibited by law.



CLAY COUNTY
 STATE OF WEST VIRGINIA
 Office of Assessor

HENRY DISTRICT
 SHEET NO: 2
 Date, Aerial Photography: 4-6-63 Date, Map: 7-30-65
 Photo No: 13-1911&1912 13-1912&1913 Scale: 1" = 400'