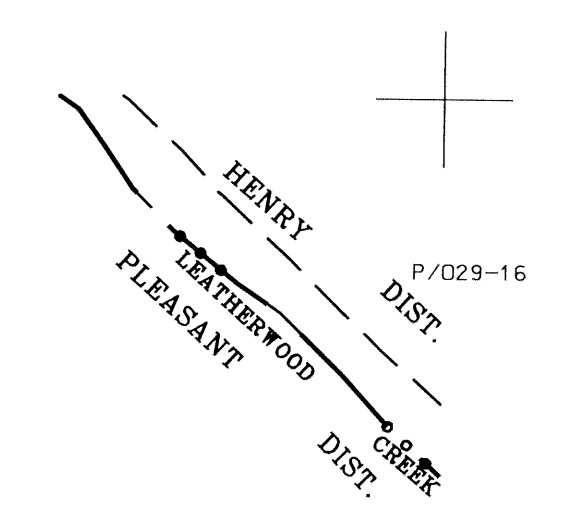
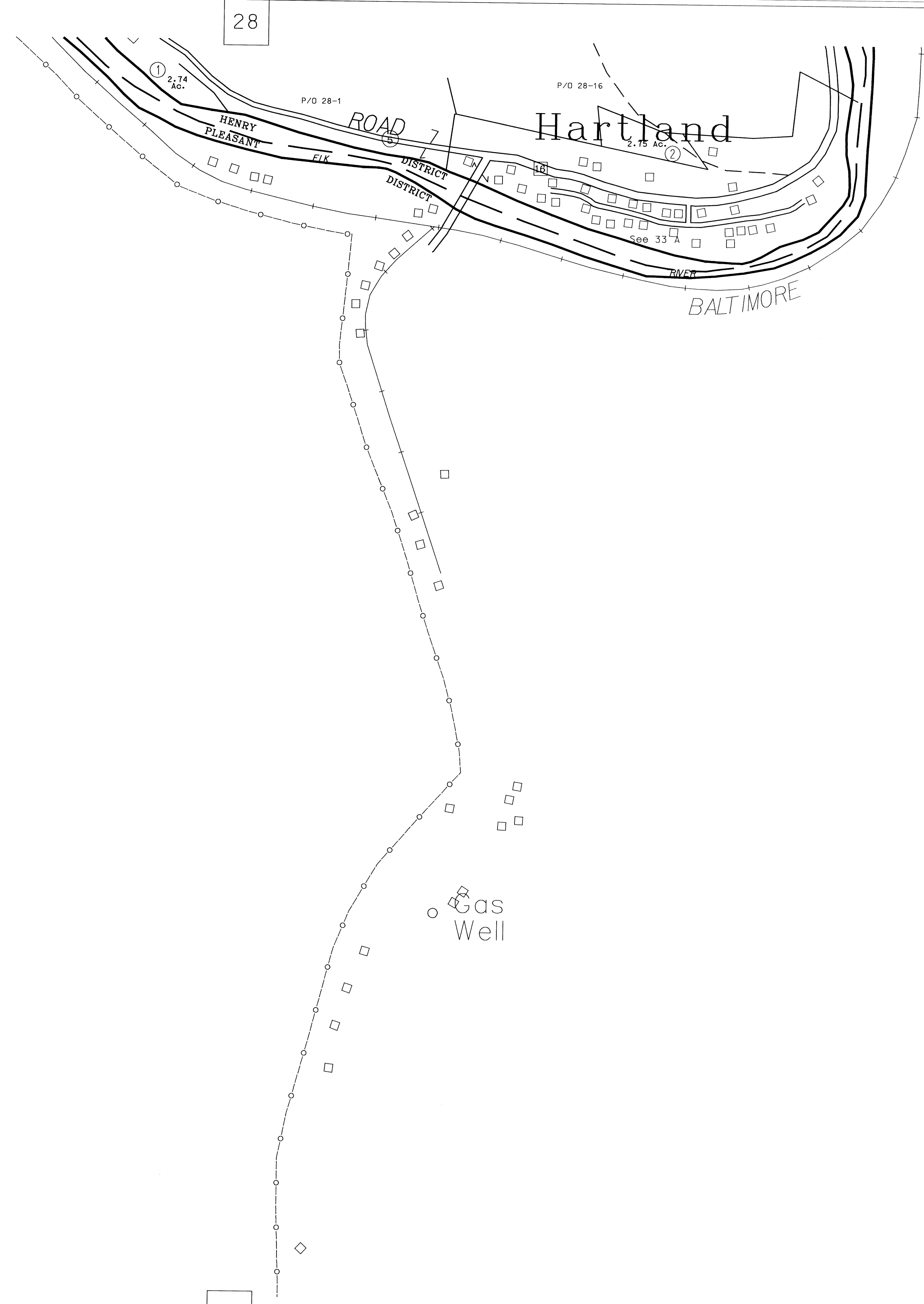
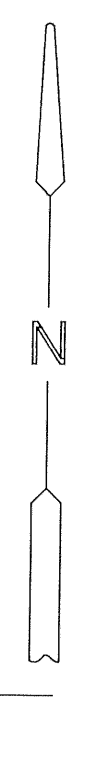
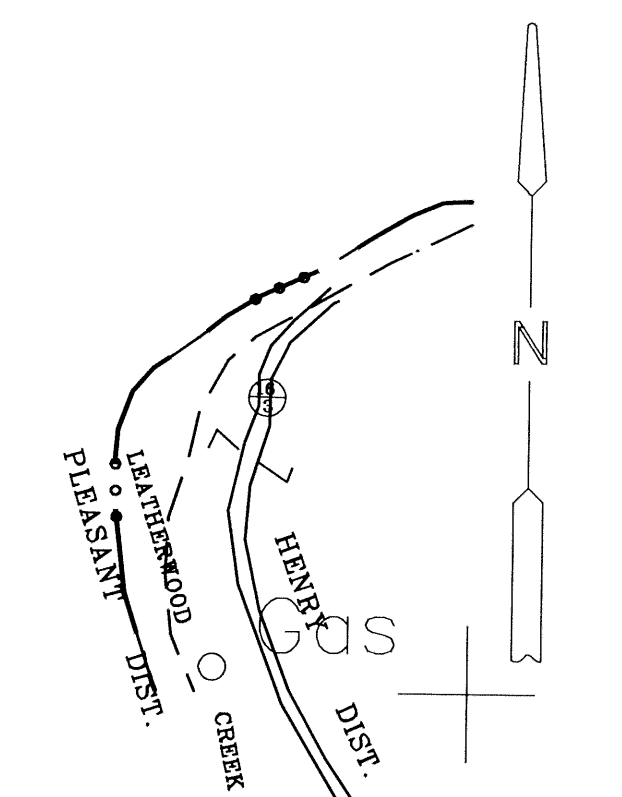


Schoonover Knob



34

Gas Well



For Tax Purposes Only
 Prepared by
 McKenzie Engineering Corporation
 806 Broad Street
 Summersville, WV 26651

LEGEND	
Property line	—————
Edge of pavement or roadway	—————
Corporation line	—————
District line	—————
County line	—————
Original lot line	-----
Dead lot number	(15)
Parcel or index number	Ⓢ
Improvement	○
Railroad	—+—+—+—

REVISIONS
1
2
3
4
5
6
7
8

RESTRICTION

All tax maps created under the provisions of reappraisal legislation are the property of Clay County West Virginia and the reproduction, copying, distribution or sale of such tax maps or any copies thereof without the written permission of the Clay County Assessor is prohibited by law.

KEY MAP	
27	28 29
	33 34
	39 40

CLAY COUNTY
 STATE OF WEST VIRGINIA
 Office of Assessor

HENRY DISTRICT
 SHEET NO:33
 Date, Aerial Photography: 4-6-63 Date, Map: 7-30-65
 Photo No: 17-1843-1844 17-1844-1845 Scale: 1" = 400'

© 2001 Clay County, West Virginia. All rights reserved.