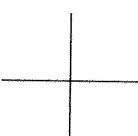
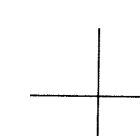
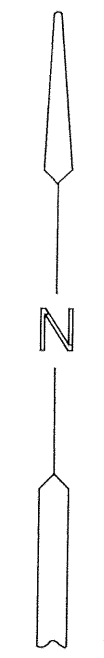
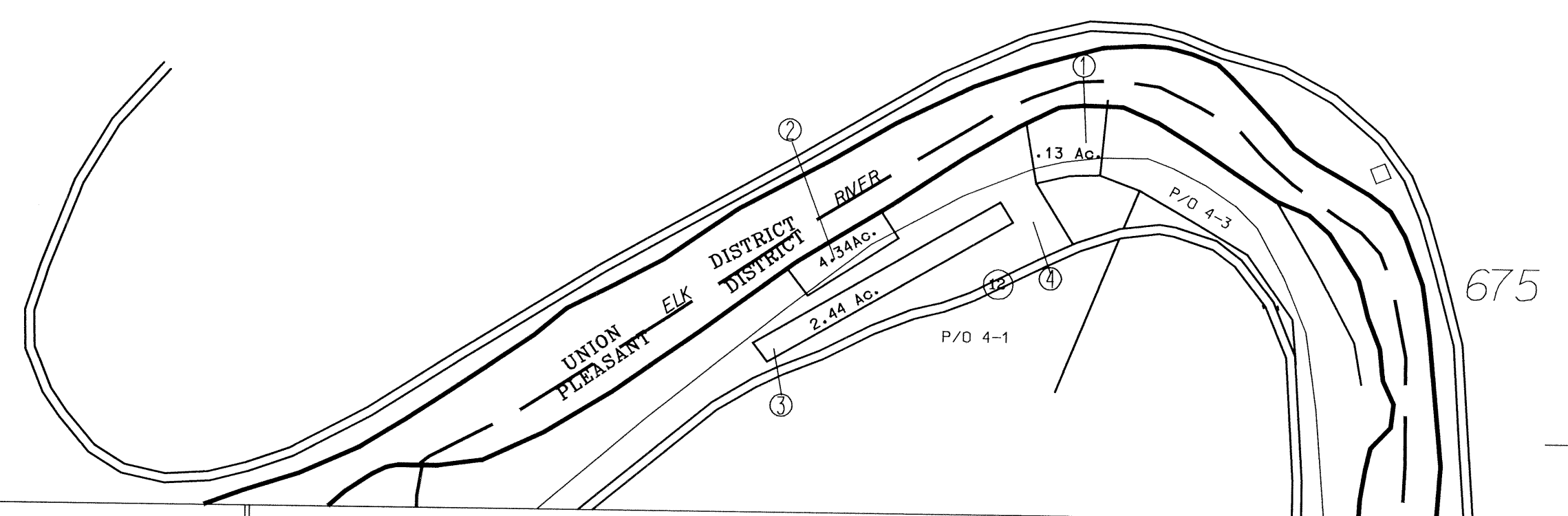


2



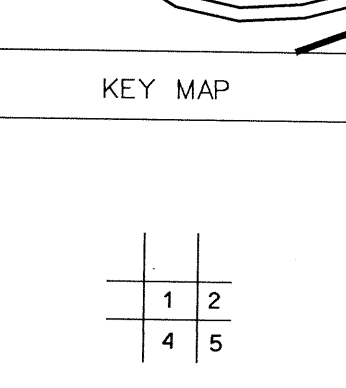
4

For Tax Purposes Only
Prepared by
McKenzie Engineering Corporation
806 Broad Street
Summersville, WV 26651

LEGEND	
Property line	Original lot line
Edge of pavement or roadway	Deed lot number (15)
Corporation line	Parcel or index number
District line	Improvement
County line	Railroad

REVISIONS
1
2
3
4
5
6
7
8

RESTRICTION
All tax maps created under the provisions of reappraisal legislation are the property of Clay County West Virginia and the reproduction, copying, distribution or sale of such tax maps or any copies thereof without the written permission of the Clay County Assessor is prohibited by law.



CLAY COUNTY
STATE OF WEST VIRGINIA
Office of Assessor

PLEASANT DISTRICT
SHEET NO:1
Date, Aerial Photography: 4-6-63
Photo No: 15-1894, 1895, 1896, 1897
16-1703, 1704, 1705
Date, Map: 5-29-65
Scale: 1" = 400'

C:\WP1\CLAY\DESIGN\CLAYCOUNTY\ASST\11-2001\18.000.DWG