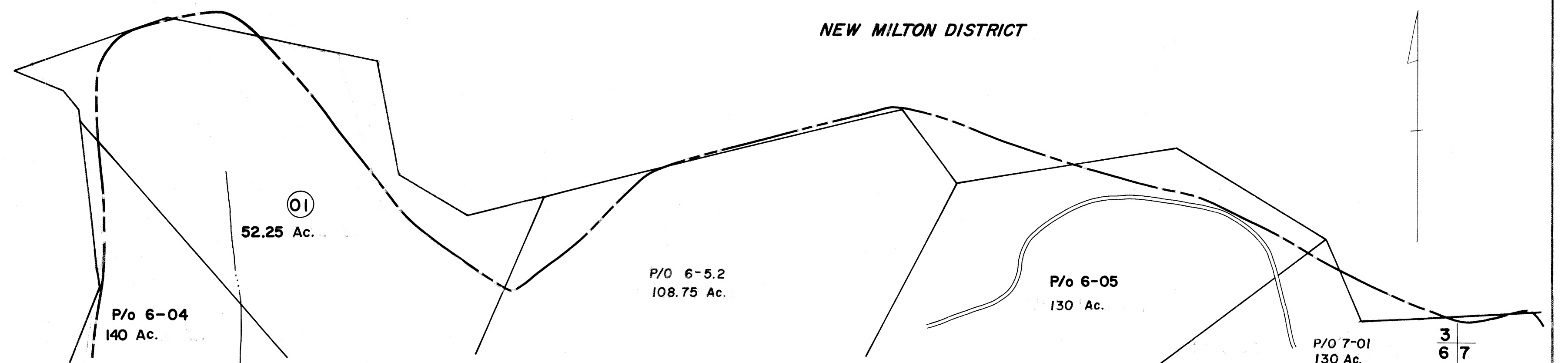


2/3
5/6



FOR TAX PURPOSES ONLY

Prepared by
L. ROBERT KIMBALL
Consulting Engineer
Ebensburg, Pennsylvania

Legend

Property line	-----	Original lot line	-----
Edge of pavement or roadway	-----	Deed lot number in parenthesis (15)	-----
Corporation line	-----	Parcel or index number in circle (99)	-----
District line	-----	Improvement	o
County line	-----	Railroad	+++++

Revisions

No.	Description	Date	By	Sheet
1	REVISED	7-81	T. Groves	9
2	OGIS	1-2-90	JB	10
3	OGIS	10-24-91	NK	11
4				12
5				13
6				14
7				15
8				16
				17
				18
				19
				20
				21
				22
				23
				24

STATE OF WEST VIRGINIA
DODDRIDGE COUNTY
Office of Assessor

COVE DISTRICT
SHEET 03

Date, Aerial Photography: APRIL, 1962 Date, Map: MAY, 1963
Photo No: 264 Scale: 1"=400'