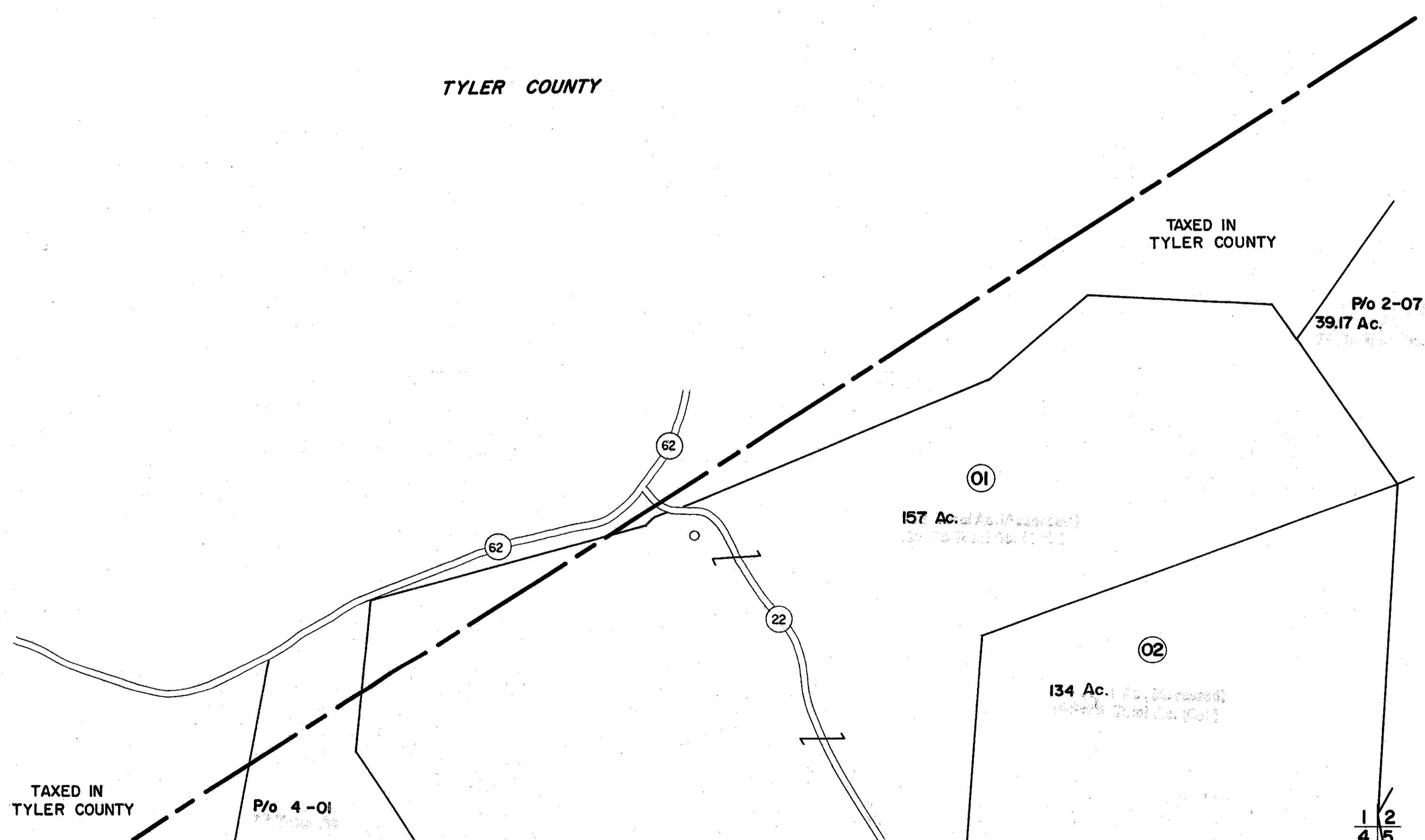


+

1/2



1/4

1/4

FOR TAX PURPOSES ONLY

Prepared by  
**L. ROBERT KIMBALL**  
 Consulting Engineer  
 Ebensburg, Pennsylvania

Legend	
Property line	Original lot line
Edge of pavement or roadway	Deed lot number in parenthesis (15)
Corporation line	Parcel or index number in circle (2)
District line	Improvement (O)
County line	Railroad

Revisions	
1	REVISED 7-81 T. Groves
2	Revised to 7-1-82 R.B.B.
3	OGIS 1-9-91 JB
4	
5	
6	
7	
8	

STATE OF WEST VIRGINIA  
 DODDRIDGE COUNTY  
 Office of Assessor

GRANT DISTRICT  
 SHEET 01

Date, Aerial Photography: APRIL, 1962 Date, Map: OCT., 1963  
 Photo No: 232 Scale: 1"=400'

156 MAPSCALE, A. 85, SMITH CO., POH., PA. 15241-1502