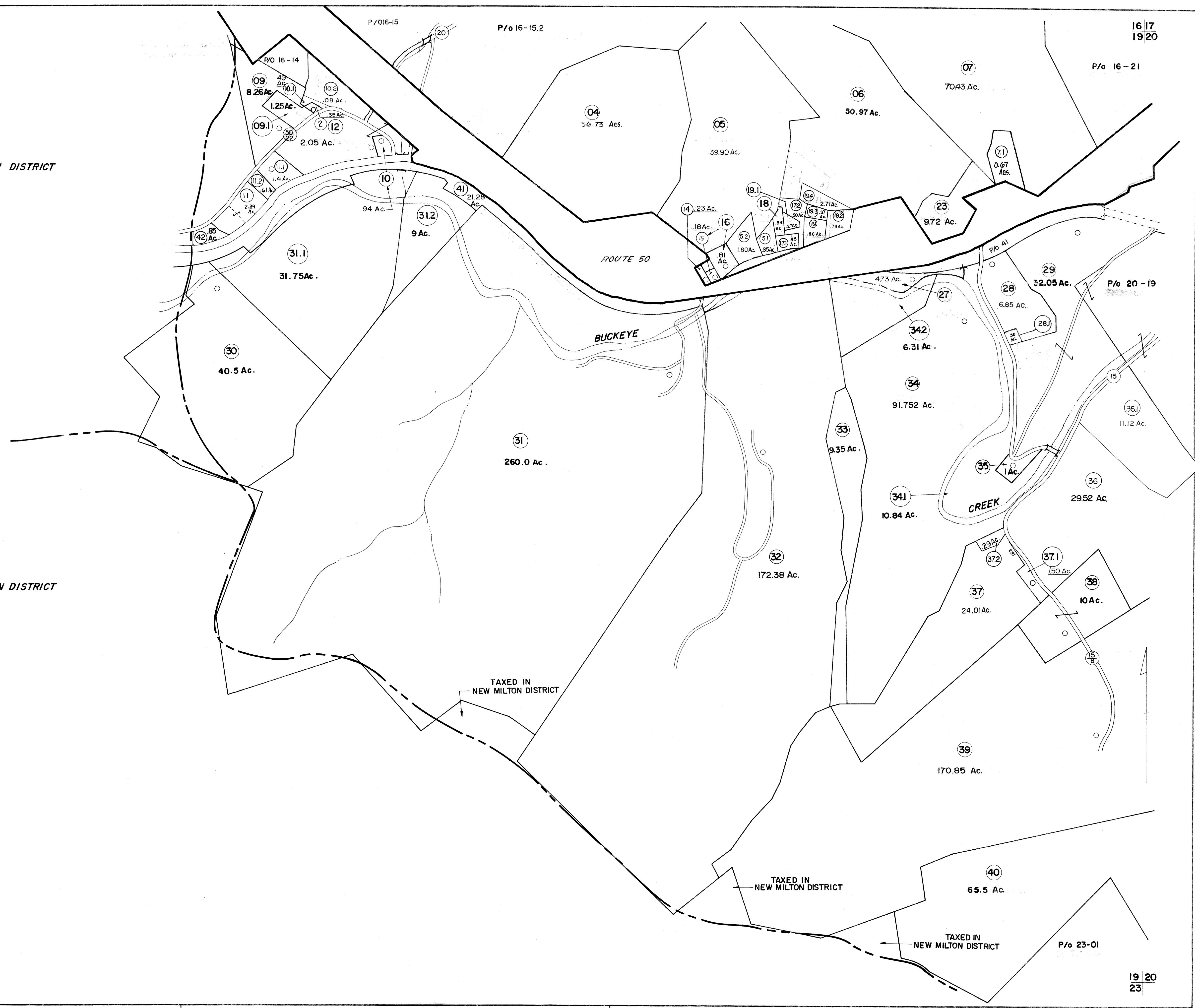


WEST UNION DISTRICT

NEW MILTON DISTRICT



FOR TAX PURPOSES ONLY

Prepared by  
**L. ROBERT KIMBALL**  
*Consulting Engineer*  
 Ebensburg, Pennsylvania

Legend

Property line	Original lot line
Edge of pavement or roadway	Dead lot number in parenthesis (15)
Corporation line	Parcel or index number in circle (9)
District line	Improvement
County line	Railroad

Revisions

1	REVISED 3/23/64	9	Revised to 7-1-88	17	SLS INC. 3/08/00	JAW
2	1-25-72 <del>7/77</del>	10	Revised to 7-1-88	18	ESI 3/29/01	REK
3	8-25-76	11	OGIS 1-17-91	19	2/29/04	S&H
4	REVISED 7-81	12	OGIS 10-24-91	20	3/17/06	S&H
5	To JULY 1982 C.P.	13	OGIS 12-8-92	21		
6	July 1985	14	OGIS 11-93	22		
7	July 1986	15	OGIS 2-95	23		
8	Revised to 7-1-87	16	O.G.I.S 1-23-96	24		

STATE OF WEST VIRGINIA  
 DODDRIDGE COUNTY

Office of Assessor

GRANT DISTRICT  
 SHEET 19

Date, Aerial Photography: APRIL, 1962 Date, Map: OCT, 1963  
 Photo No: 296, 279 Scale: 1" = 400'

156 IMPERIAL, A. & S. SMITH CO., PHO., PA., H1244-1282