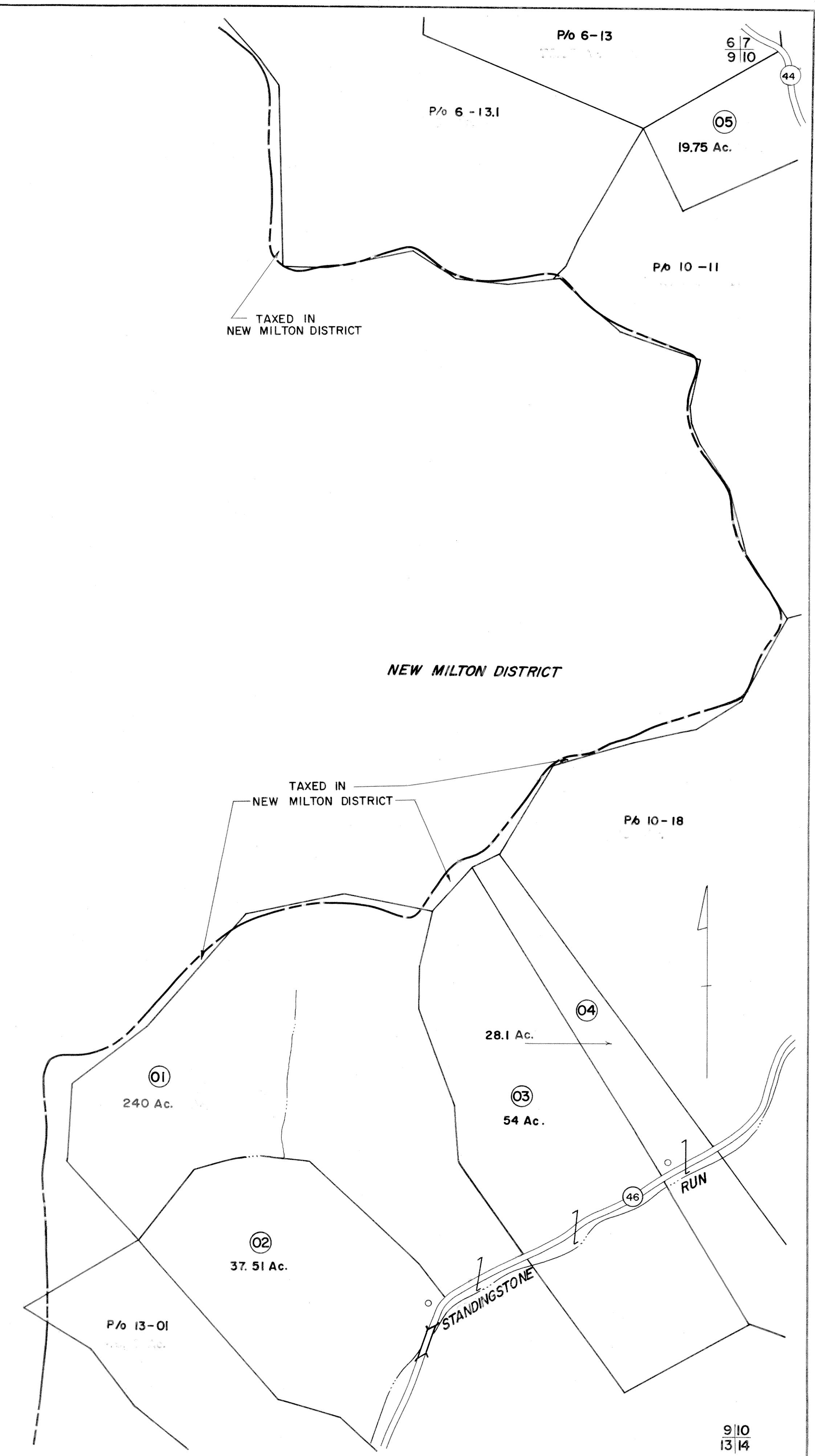


96

9
13



FOR TAX PURPOSES ONLY

Prepared by
L. ROBERT KIMBALL
Consulting Engineer
 Ebensburg, Pennsylvania

Legend	
Property line	Original lot line
Edge of pavement or roadway	Dead lot number in parenthesis (15)
Corporation line	Parcel or index number in circle (09)
District line	Improvement
County line	Railroad

Revisions			
1	REVISED 3/10/64		9
2	8-23-76	D.S.	10
3	REVISED 7-81	T. Groves	11
4	OGIS 1-4-91	JB	12
5	5/5/03	H & S	13
6			14
7			15
8			16
			17
			18
			19
			20
			21
			22
			23
			24

STATE OF WEST VIRGINIA
 DODDRIDGE COUNTY
 Office of Assessor

**GREENBRIER DISTRICT
 SHEET 09**

Date, Aerial Photography: APRIL, 1962 Date, Map: JULY, 1963
 Photo No: 303 Scale: 1"=400'

150 IMPERIAL, A. B. SMITH CO., PCH., PA. 11264-1322