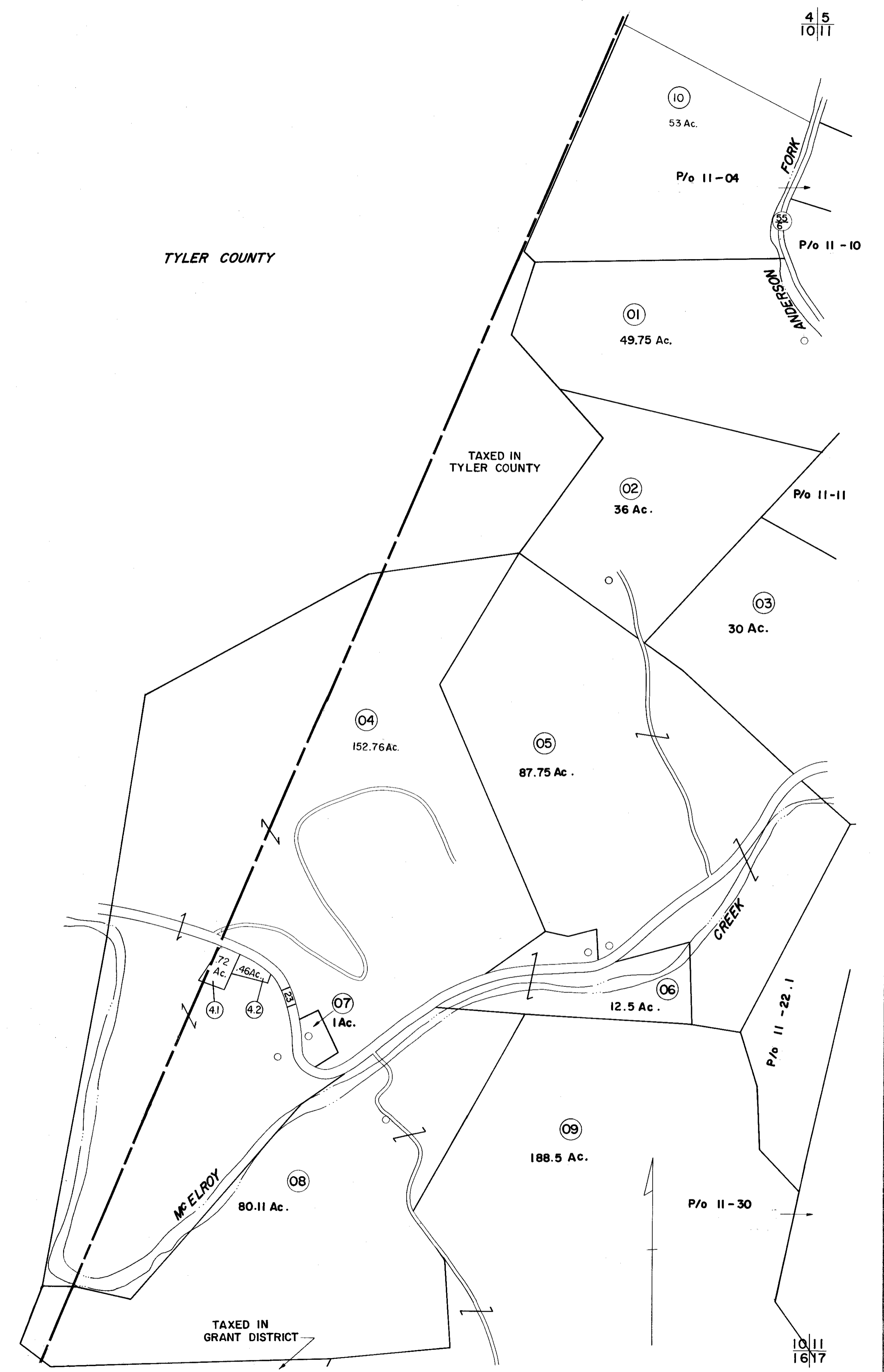


5  
10

4 5  
10 11



10  
16

10 11  
16 17

FOR TAX PURPOSES ONLY

Prepared by  
**L. ROBERT KIMBALL**  
Consulting Engineer  
Ebensburg, Pennsylvania

Legend

Property line	Original lot line
Edge of pavement or roadway	Dead lot number in parenthesis (15)
Corporation line	Parcel or index number in circle (10)
District line	Improvement (O)
County line	Railroad

Revisions

1	Revised 1/24/72 RFL	9	17
2	REVISED 7-81 T. Groves	10	18
3	TO JULY 1982 C.P.	11	19
4	Revised to 7.1.89 RCB	12	20
5	OGIS 12-26-90 JB	13	21
6	OGIS 2-95 HD	14	22
7	SLS INC. 2/15/99 DSW	15	23
8		16	24

STATE OF WEST VIRGINIA  
DODDRIDGE COUNTY

Office of Assessor

McCLELLAN DISTRICT  
SHEET 10

Date, Aerial Photography: APRIL, 1962 Date, Map: SEPT, 1963  
Photo No: 250 Scale: 1"=400'