

TAXED IN GRANT DIST.

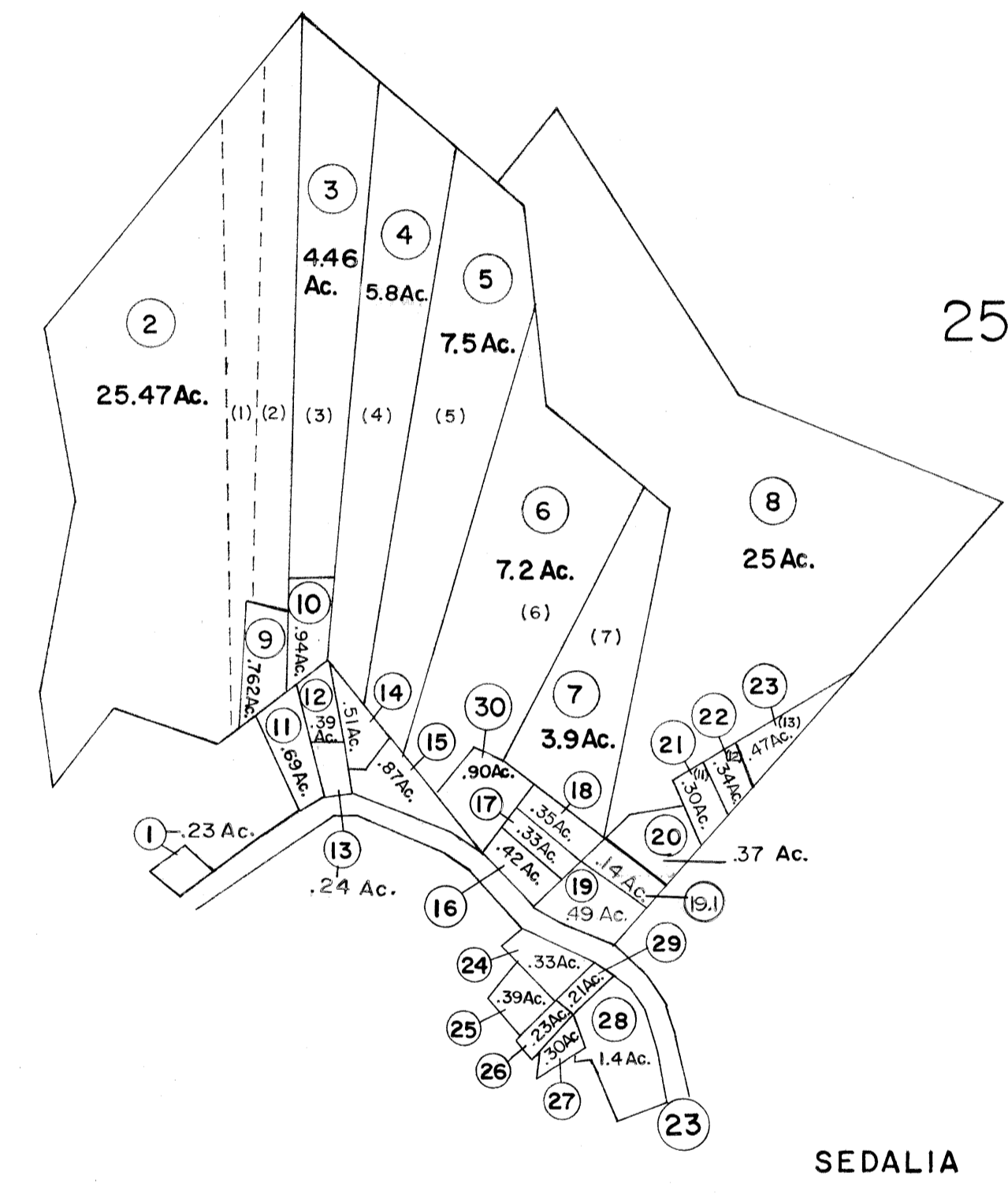
P/O 10-09

GRANT DISTRICT

25

25

25



SEDALIA



FOR TAX PURPOSES ONLY

Prepared by
L. ROBERT KIMBALL
 Consulting Engineer
 Ebensburg, Pennsylvania

Legend	
Property line	Original lot line
Edge of pavement or roadway	Deed lot number in parenthesis (15)
Corporation line	Parcel or index number in circle (9)
District line	Improvement (0)
County line	Railroad

Revisions	
1	REVISED 7-81 T.Groves
2	To 7-1-86 C.P
3	OGIS 12-28-90 JB
4	3/2/04 S&H
5	5-3-05 H&S
6	3/17/06 S&H
7	
8	

STATE OF WEST VIRGINIA
 DODDRIDGE COUNTY
 Office of Assessor

McCLELLAN DISTRICT
 SHEET 16

Date, Aerial Photography: APRIL, 1962 Date, Map: SEPT, 1963
 Photo No: 250' Scale: 1"=400'

156 IMPERIAL, A. B. SMITH CO., PCH., PA. H264-1262