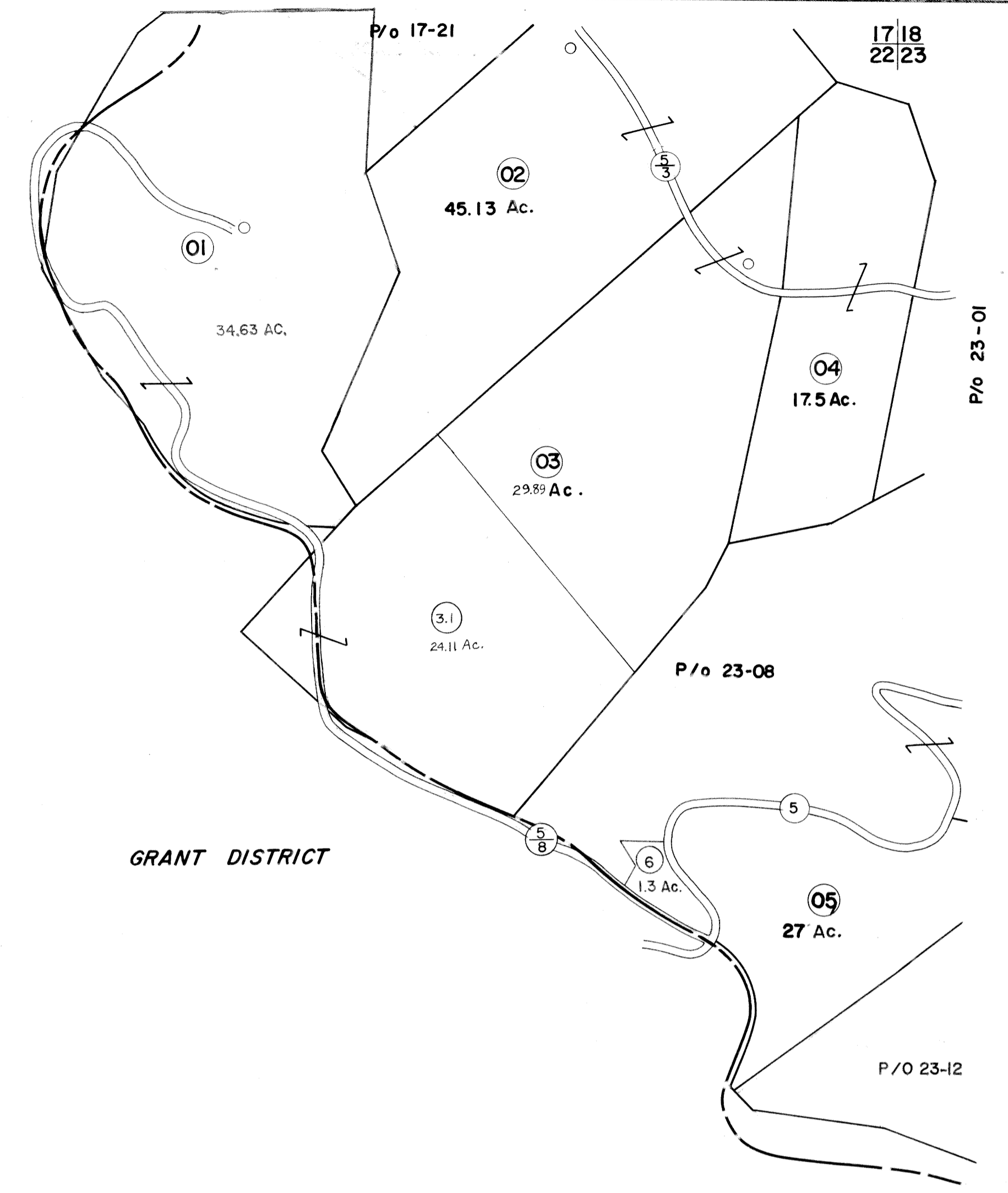


17
22

17 18
22 23



22

22 23
27

FOR TAX PURPOSES ONLY

Prepared by
L. ROBERT KIMBALL
Consulting Engineer
Ebensburg, Pennsylvania

Legend	
Property line	Original lot line
Edge of pavement or roadway	Deed lot number in parenthesis (15)
Corporation line	Parcel or index number in circle (16)
District line	Improvement
County line	Railroad

Revisions			
1	REVISED 3/24/64		9
2	3-31-90	A/CS	10
3	REVISED 7-81	DR. T-82 T Groves	11
4	Revised to 7-1-88	JF	12
5	OGIS 12-28-90	JB	13
6	SLS INC. 3/03/00	JAW	14
7	ESI 3/27/01	REK	15
8			16

STATE OF WEST VIRGINIA
DODDRIDGE COUNTY

Office of Assessor

McCLELLAN DISTRICT
SHEET 22

Date, Aerial Photography: APRIL, 1962 Date, Map: SEPT, 1963
Photo No: 273 Scale: 1"=400'

156 IMPERIAL, A.B. SMITH CO., P.O., PA. 15244-1262