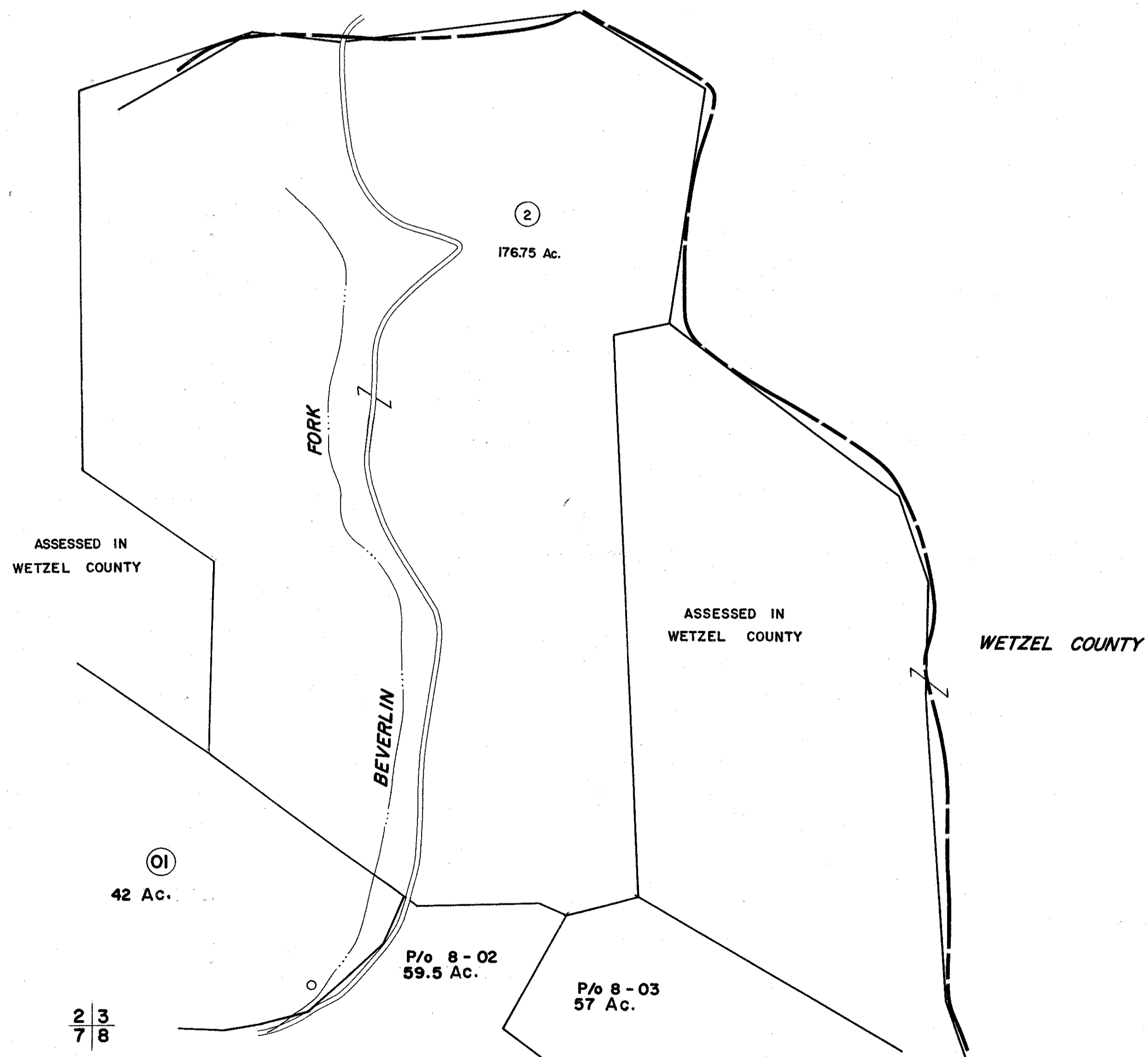


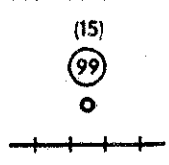
WETZEL COUNTY



FOR TAX PURPOSES ONLY

Prepared by  
**L. ROBERT KIMBALL**  
 Consulting Engineer  
 Ebensburg, Pennsylvania

| Legend                      |                                  |
|-----------------------------|----------------------------------|
| Property line               | Original lot line                |
| Edge of pavement or roadway | Deed lot number in parenthesis   |
| Corporation line            | Parcel or index number in circle |
| District line               | Improvement                      |
| County line                 | Railroad                         |



Revisions

| No. | Description | Date     | By        |
|-----|-------------|----------|-----------|
| 1   | REVISED     | 7-81     | T. Groves |
| 2   | OGIS        | 12-21-90 | JB        |
| 3   |             |          |           |
| 4   |             |          |           |
| 5   |             |          |           |
| 6   |             |          |           |
| 7   |             |          |           |
| 8   |             |          |           |

STATE OF WEST VIRGINIA  
 DODDRIDGE COUNTY

Office of Assessor

McCLELLAN DISTRICT  
 SHEET 03

Date, Aerial Photography: APRIL, 1962 Date, Map: SEPT., 1963  
 Photo No: 291 Scale: 1" = 400'